



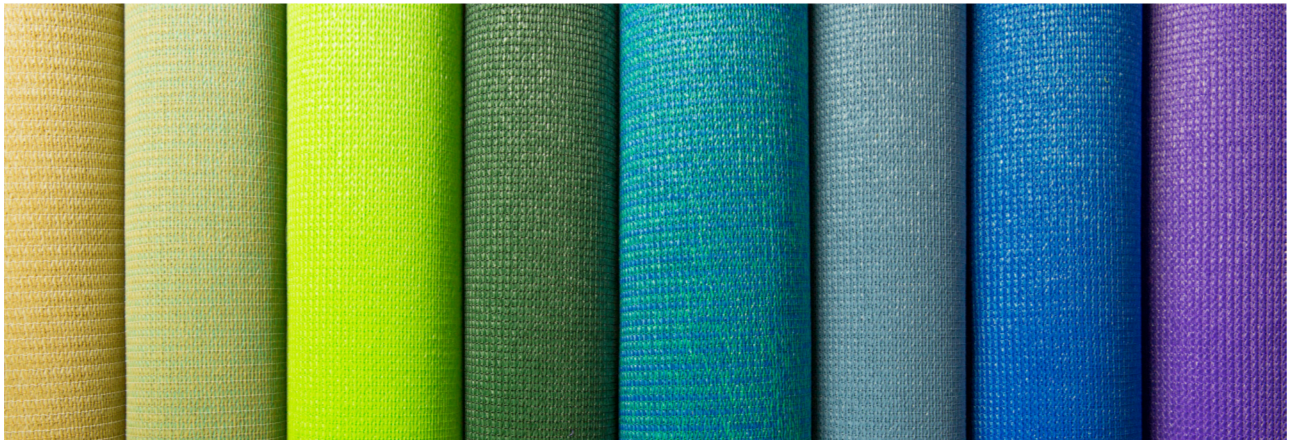
SOLAMESH™

SHADE SAIL FABRIC AND HARDWARE



SOLAMESH: YOUR SHADE SAIL SOLUTION

From fabric to hardware, Trivantage® is the one-stop shop for all shade sail needs. With the introduction of the SolaMesh™ line, an exclusive new offering, Trivantage now carries a complete line of fabric and hardware to construct any shade sail or structure.

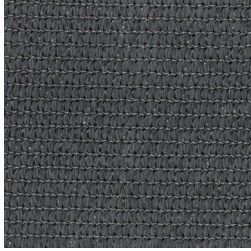




**SOLAMESH FABRIC IS
AN INDUSTRY-LEADING
PERFORMANCE FABRIC
FOR SHADE SAILS, SHADE
AND FABRIC STRUCTURES.**

This innovative fabric is engineered with polymer technology and made from HDPE monofilament and tape yarns to provide optimal strength, durability and protection from UV rays.

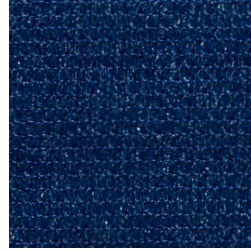
Tested in the world's harshest environments, SolaMesh fabric is perfect for shade sails and tension shade structures, expanding the accessibility of many outdoor spaces despite the season or weather conditions.



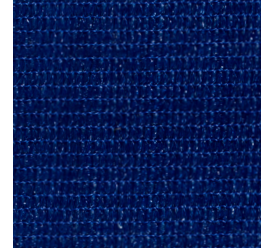
865084
GRAPHITE



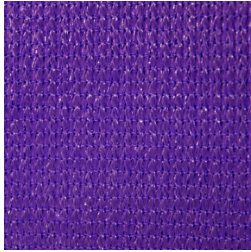
865071
JET BLACK



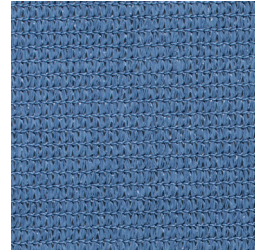
865086
DENIM



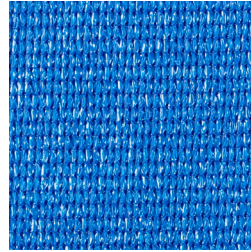
865070
ROYAL BLUE



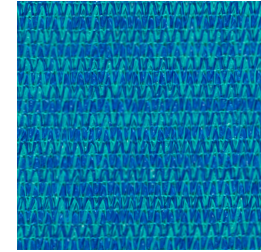
865089
GRAPE



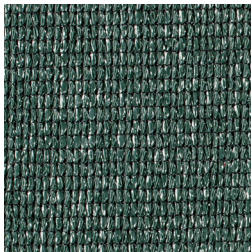
865078
VENETIAN BLUE



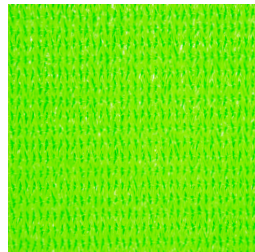
865085
OCEAN BLUE



865080
LAGOON



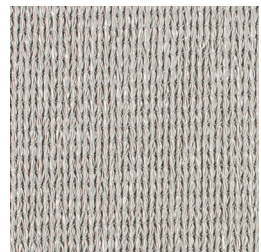
865072
FOREST GREEN



865088
LIME GREEN



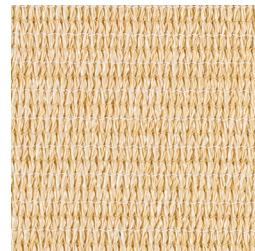
865077
CACTUS



865079
SMOKE GREY



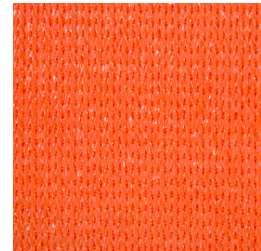
865075
CREAM



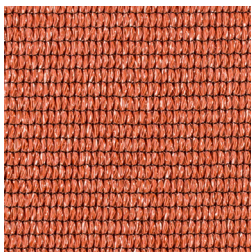
865074
SAND



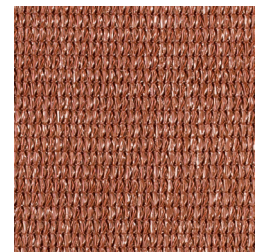
865081
CANARY YELLOW



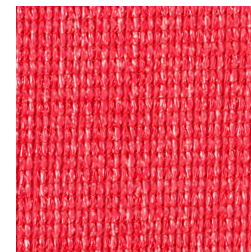
865087
BRIGHT ORANGE



865082
BRICK



865083
CHESTNUT



865073
CRIMSON



SolaMesh is available exclusively from Trivantage in 19 colors. This versatile, worry-free product has passed ASTM E84.



SolaMesh fabric is backed by a 10 year warranty.

118 inches wide, 9.5 oz per sq. yd.

Colors are representative only. Small variations in shade should be anticipated and are within commercial tolerances.

STAINLESS
STEEL
316

Engineered to work seamlessly with SolaMesh fabric, SolaMesh hardware is made of stainless steel 316 and available in a variety of sizes to meet all demands.

5
YEAR
LIMITED WARRANTY

SolaMesh hardware is backed by a 5 year warranty.

TURNBUCKLES

		MIN. BREAKING LOAD
207020	SOLAMESH TURNBUCKLE JAW/JAW SS316 08MM (5/16")	1,553KG / 3,417LBS
207021	SOLAMESH TURNBUCKLE JAW/JAW SS316 10MM (3/8")	2,248KG / 4,946LBS
207022	SOLAMESH TURNBUCKLE JAW/JAW SS316 12MM (7/16")	3,219KG / 7,081LBS
207067	SOLAMESH TURNBUCKLE EYE/EYE SS316 08MM (5/16")	1,553KG / 3,417LBS
207068	SOLAMESH TURNBUCKLE EYE/EYE SS316 10MM (3/8")	2,248KG / 4,946LBS
207069	SOLAMESH TURNBUCKLE EYE/EYE SS316 12MM (7/16")	3,219KG / 7,081LBS
207023	SOLAMESH TURNBUCKLE HOOK/HOOK SS316 08MM (5/16")	501KG / 1,102LBS
207024	SOLAMESH TURNBUCKLE HOOK/HOOK SS316 10MM (3/8")	777KG / 1,709LBS



SPRING HOOKS

207025	SOLAMESH SPRING HOOK SS316 08MM (5/16")
207026	SOLAMESH SPRING HOOK SS316 10MM (3/8")



THIMBLES

207056	SOLAMESH THIMBLE SS316 06MM (1/4")
207057	SOLAMESH THIMBLE SS316 08MM (5/16")
207058	SOLAMESH THIMBLE SS316 10MM (3/8")



HEAVY DUTY DEE RINGS

		MIN. BREAKING LOAD
207027	SOLAMESH CABLE DEE RING SS316 06 X 50MM (1/4" X 2")	1,224KG / 2,697LBS
207028	SOLAMESH CABLE DEE RING SS316 08 X 50MM (5/16" X 2")	2,141KG / 4,720LBS
207029	SOLAMESH CABLE DEE RING SS316 10 X 55MM (3/8" X 2 3/16")	3,569KG / 7,866LBS
207030	SOLAMESH DEE RING THIMBLE SS316 06 X 50MM (1/4" X 2")	1,050KG / 2,315LBS
207031	SOLAMESH DEE RING THIMBLE SS316 08 X 50MM (5/16" X 2")	1,866KG / 4,113LBS
207032	SOLAMESH DEE RING THIMBLE SS316 10 X 65MM (3/8" X 2 9/16")	2,916KG / 6,428LBS



STANDARD CONNECTORS

		MIN. BREAKING LOAD
207033	SOLAMESH DEE RING SS316 06 X 50MM (1/4" X 2")	1,053KG / 2,316LBS
207034	SOLAMESH DEE RING SS316 08 X 50MM (5/16" X 2")	1,870KG / 4,114LBS
207035	SOLAMESH TRIANGLE SS316 06 X 50MM (1/4" X 2")	1,053KG / 2,316LBS
207036	SOLAMESH TRIANGLE SS316 08 X 50MM (5/16" X 2")	1,870KG / 4,114LBS



SHACKLES

		MIN. BREAKING LOAD
207037	SOLAMESH BOW SHACKLE SS316 08MM (5/16")	2,422KG / 5,328LBS
207038	SOLAMESH BOW SHACKLE SS316 10MM (3/8")	3,812KG / 8,385LBS
207039	SOLAMESH BOW SHACKLE SS316 12MM (7/16")	5,610KG / 12,342LBS
207040	SOLAMESH DEE SHACKLE SS316 08MM (5/16")	2,422KG / 5,328LBS
207041	SOLAMESH DEE SHACKLE SS316 10MM (3/8")	3,812KG / 8,385LBS
207042	SOLAMESH LONG DEE SHACKLE SS316 08MM (5/16")	2,422KG / 5,328LBS
207043	SOLAMESH LONG DEE SHACKLE SS316 10MM (3/8")	3,812KG / 8,385LBS
207044	SOLAMESH TWISTED DEE SHACKLE SS316 08MM (5/16")	2,422KG / 5,328LBS
207045	SOLAMESH TWISTED DEE SHACKLE SS316 10MM (3/8")	3,812KG / 8,385LBS



MOUNTING PLATES

207046	SOLAMESH DIAMOND PAD EYE SS316 090 X 55MM (3 1/2" X 2 9/16")
207047	SOLAMESH DIAMOND PAD EYE SS316 100 X 62MM (4" X 2 1/2")
207048	SOLAMESH DIAGONAL EYE WALL PLATE SS316 100MM (4")
207049	SOLAMESH DIAGONAL EYE WALL PLATE SS316 150MM (6")



MOUNTING BOLTS

207050	SOLAMESH EYE BOLT, NUT, WASHER SS316 08 X 100MM (5/16" X 4")
207051	SOLAMESH EYE BOLT, NUT, WASHER SS316 08 X 150MM (5/16" X 6")
207052	SOLAMESH EYE BOLT, NUT, WASHER SS316 10 X 150MM (3/8" X 6")
207062	SOLAMESH EYE BOLT SS316 08 X 080MM (5/16" X 3 1/8")
207063	SOLAMESH EYE BOLT SS316 10 X 080MM (3/8" X 3 1/8")
207064	SOLAMESH EYE BOLT SS316 12 X 100MM (7/16" X 4")



WIRE ROPE AND CONNECTORS

		MIN. BREAKING LOAD
207059	SOLAMESH SHADE SAIL WIRE ROPE SS316 06MM (1/4") 492' REEL	1,917KG / 4,217LBS
207060	SOLAMESH SHADE SAIL WIRE ROPE SS316 08MM (5/16") 328' REEL	3,408KG / 7,497LBS
207061	SOLAMESH SHADE SAIL WIRE ROPE SS316 10MM (3/8") 328' REEL	5,326KG / 11,717LBS
207053	SOLAMESH ROPE CLAMP SS316 06MM (1/4")	
207054	SOLAMESH ROPE CLAMP SS316 08MM (5/16")	
207055	SOLAMESH ROPE CLAMP SS316 10MM (3/8")	



SLIDE ON WIRE PARTS

		MIN. BREAKING LOAD
207066	SOLAMESH SNAP HOOK SS316 (2" X 3/5")	204KG / 450LBS
207070	SOLAMESH PAD-EYE STAINLESS STEEL SS316 (2" X 3/4")	





SOLAMESH™