

# Polyfab Shade Sail Edge Webbing™

To match Polytex®, Comtex® and Architec 400®



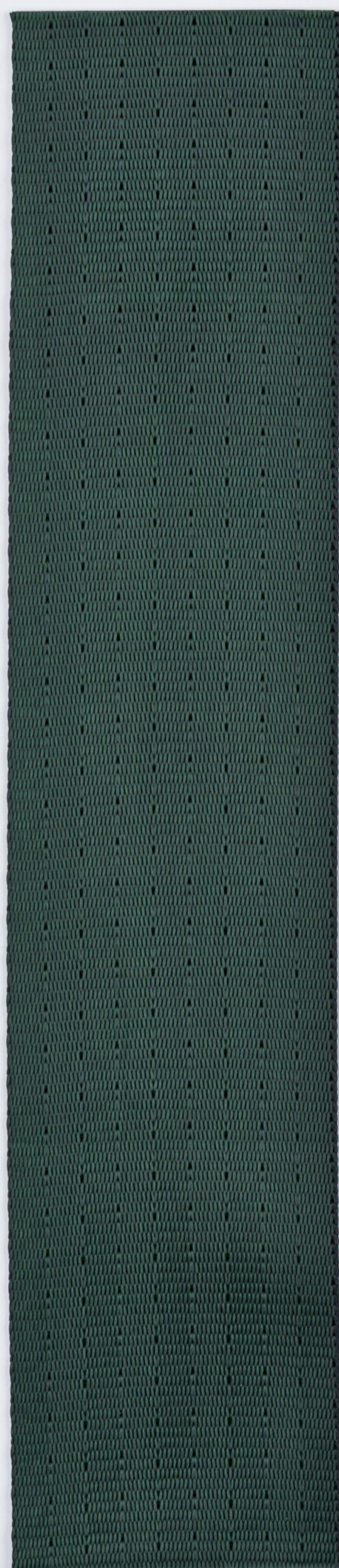
[www.PolyfabUSA.com](http://www.PolyfabUSA.com)

  
**polyfab™**  
USA

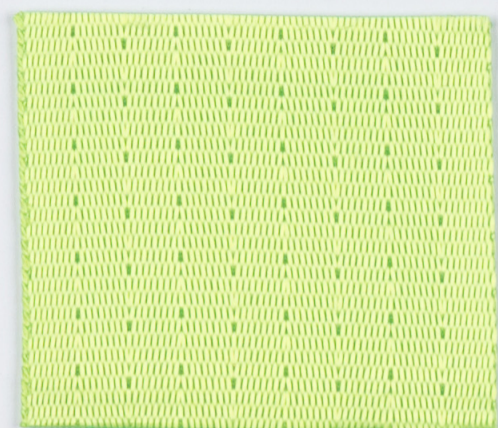


COLOR RANGE

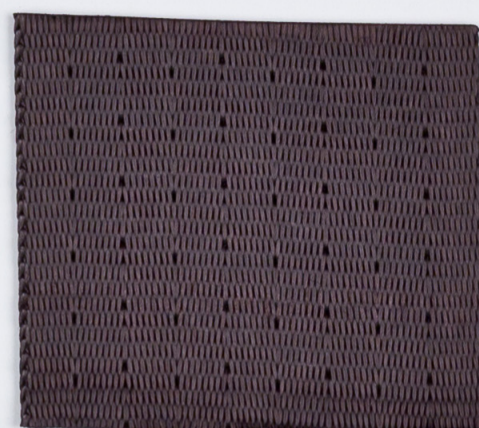
MSC – matching shade cloth  
 WS – webbing style



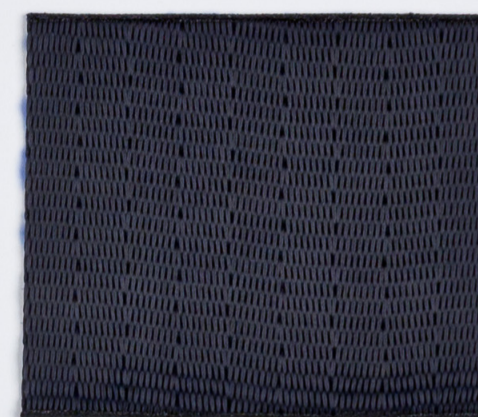
WS Midnight Green 62  
 MSC Midnight Green



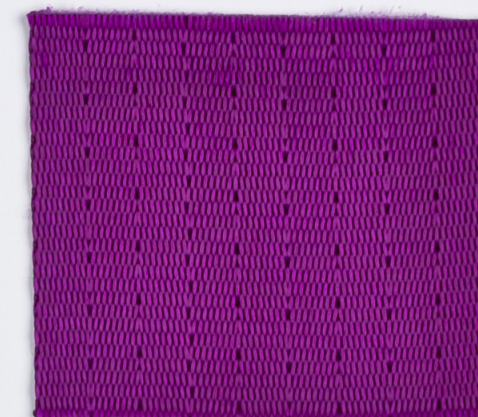
WS Flouro Green 67  
 MSC Lime



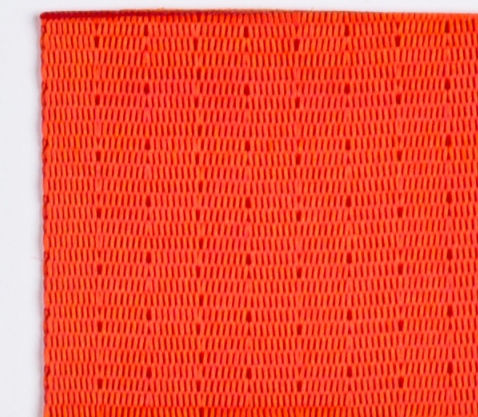
WS Café Noir 35  
 MSC Café Noir



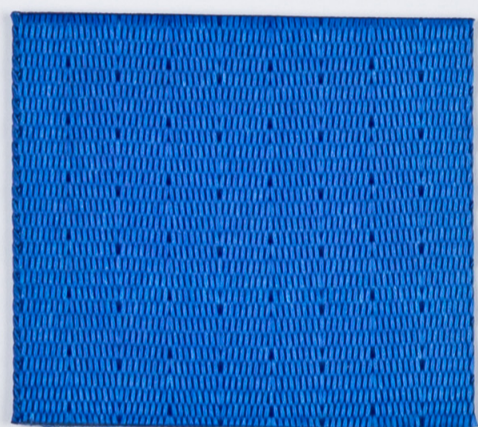
WS Navy Blue 51  
 MSC Navy Blue



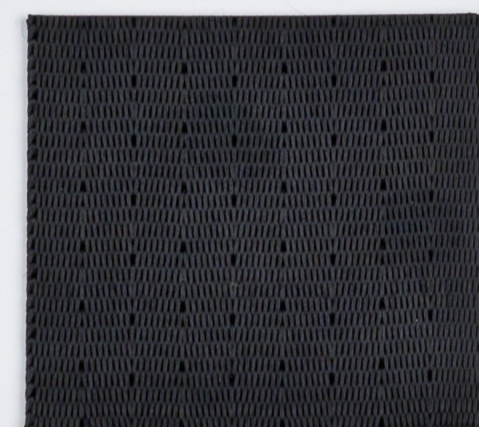
WS Purple 58  
 MSC Grape



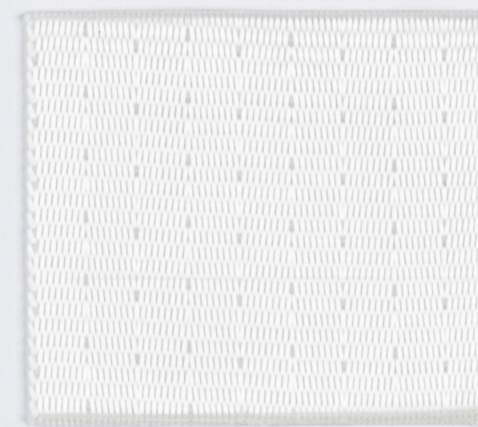
WS Antec Orange 22  
 MSC Orange



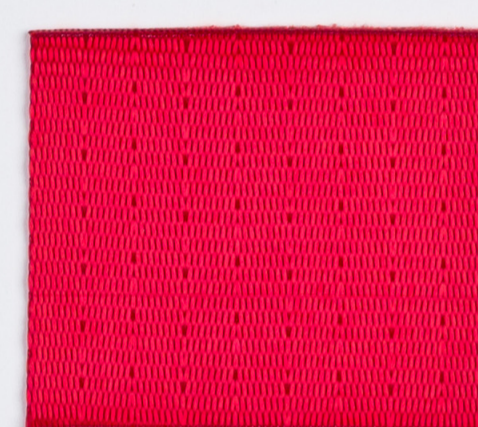
WS Blue 50  
 MSC Aquamarine



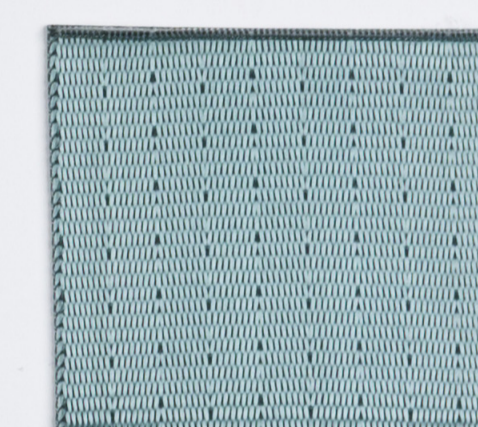
WS Black 99  
 MSC Black



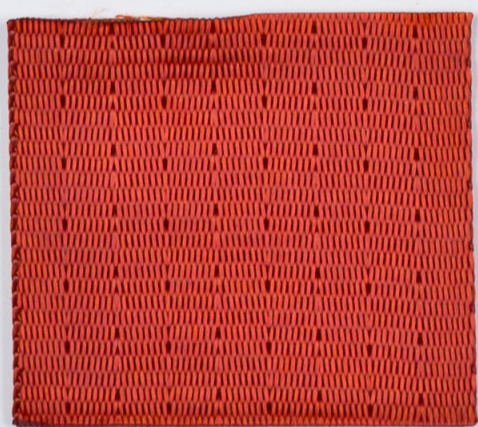
WS White 01  
 MSC White



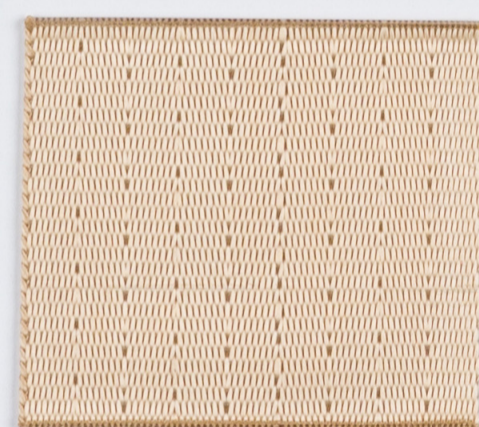
WS Red 30  
 MSC Red



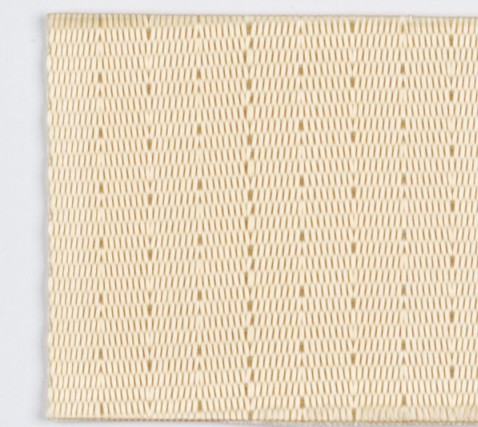
WS Sage 19  
 MSC Sage



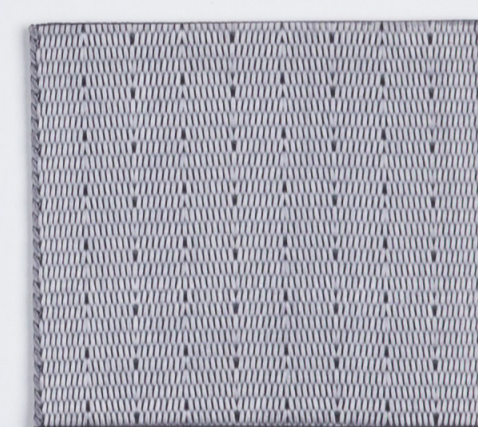
WS Bronze 81  
 MSC Bronze/Rust



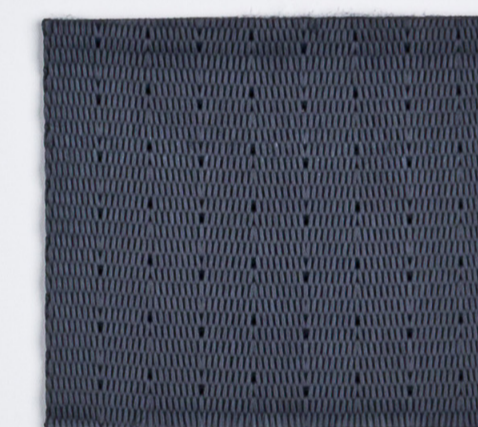
WS Beige 72  
 MSC Cappuccino



WS Sandstone 73  
 MSC Sandstone



WS Silver Grey 91  
 MSC Silver



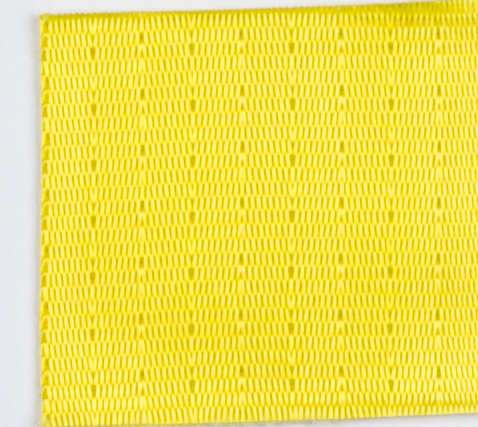
WS Charcoal 92  
 MSC Slate Grey



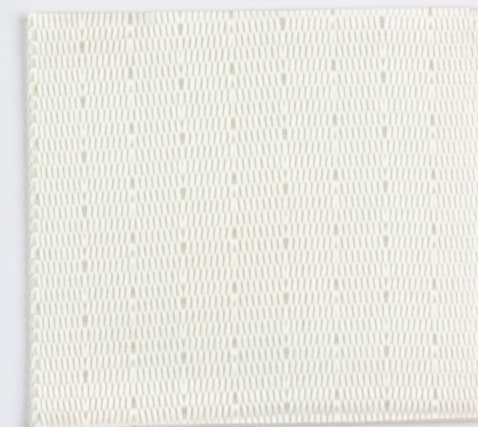
WS Claret 32  
 MSC Claret



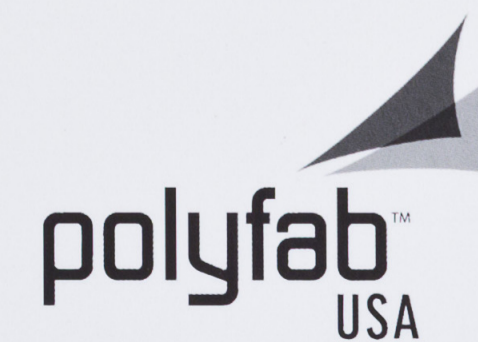
WS Berry 36  
 MSC Berry



WS Yellow 10  
 MSC Yellow/Lemon



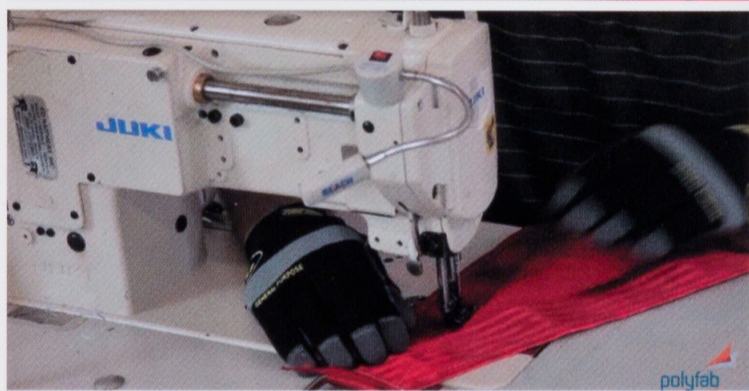
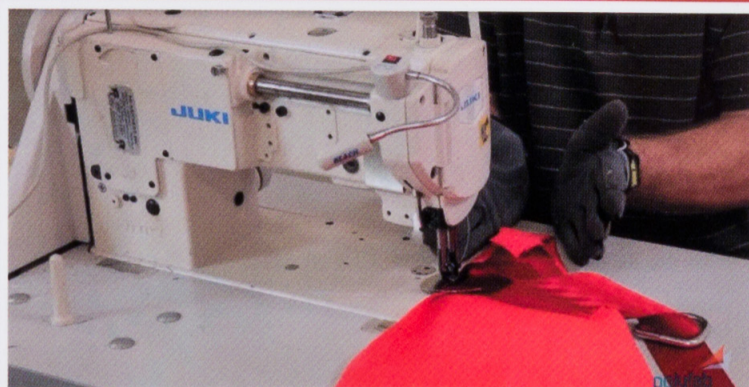
WS Porcelain 71  
 MSC Porcelain





Used for Shade Structures and Shade Sails, Polyfab Shade Sail Edge Webbing is the choice of fabricators looking for an "edge" over their competition! Made in Australia, this polyester webbing is 2" wide and put up on 109 yard rolls with a breaking strength of approximately 4,720 lbf. Available in 20 colors to match Polytex®, Comtex® and Architec 400® extra heavy duty knitted shadecloth:

[www.PolyfabUSA.com](http://www.PolyfabUSA.com)

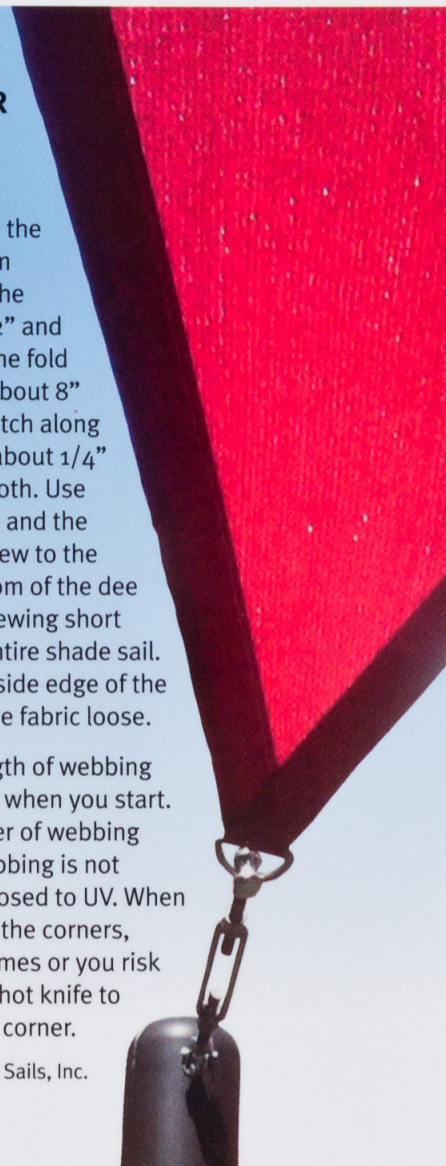


**SOME SUGGESTIONS FOR SEWING POLYFAB SHADE SAIL EDGE WEBBING\***

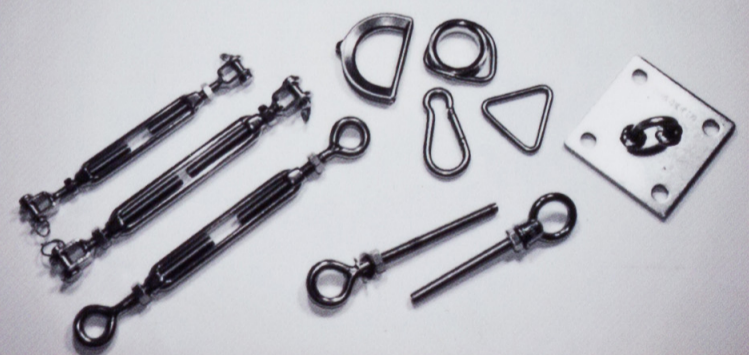
The webbing is usually sewn on the underside of the sail - away from UV exposure. Begin by folding the edge of the Shadecloth over 1/2" and placing the webbing on top of the fold leaving a 1/8" reveal. Starting about 8" from the corner, sew the first stitch along the outer edge of the webbing about 1/4" in from the edge of the Shadecloth. Use a light hand and keep the fabric and the webbing at the same tension. Sew to the corner then sew along the bottom of the dee ring or tri ring on each corner, sewing short sections at a time around the entire shade sail. Sew 2nd stitch 1/4" from the inside edge of the webbing, keeping the bulk of the fabric loose.

**TIPS** - Use one continuous length of webbing and load up one ring per corner when you start. Sew in a second reinforcing layer of webbing (5" - 6") at the corners if the webbing is not covered by Shadecloth and exposed to UV. When stitching across the webbing at the corners, don't sew across more than 3 times or you risk perforating the webbing. Use a hot knife to trim off the webbing on the last corner.

\*From Patrick Howe, Wholesale Shade Sails, Inc. ([www.wholesaleshadesails.com](http://www.wholesaleshadesails.com))



Also available from Trivantage  
**POLYFAB PRO™ SHADE SAIL HARDWARE**



Distributed by:

**TRIVANTAGE**

ORDER. DONE. GOOD CALL.



**TRIVANTAGE**

ORDER. DONE. GOOD CALL.



**USA**

Mebane, NC (800) 786-1876 (Corporate Office)  
Hayward, CA (800) 786-7607  
City of Industry, CA (800) 841-0555  
Denver, CO (800) 786-7609  
Miami, FL (800) 786-7605  
Lithia Springs, GA (800) 786-7606  
Elmhurst, IL (800) 786-7608  
Maryland Heights, MO (800) 786-7603  
Somerset, NJ (800) 786-7602  
Mebane, NC (919) 304-6810  
Cleveland, OH (800) 786-7601  
Irving, TX (800) 786-7610  
Tukwila, WA (800) 213-1465  
[www.trivantage.com](http://www.trivantage.com)

Trivantage™ is a trademark of Glen Raven, Inc.

**CANADA**

Trican Corp. (800) 387-2851  
[www.tricancorp.ca](http://www.tricancorp.ca)

**MEXICO**

Tunali Tec,  
Morelos (777) 362-0636  
Jalisco (333) 657-3660  
[www.tunalitec.com](http://www.tunalitec.com)

This webbing is designed for use on HDPE knitted shadecloth. In the unlikely event of a failure, the webbing will be replaced. The manufacturer cannot be held liable for consequential damage. If any doubt of the compatibility of the webbing and the material it's being sewn onto, sandwich a piece of the webbing between 2 layers of the fabric to be used and clamp this under pressure overnight.

