

# PHIFER

EXTERIOR SUN CONTROL  
FABRIC

SUNTEX® 80/90

---

WEAVING  
EXCELLENCE  
WITH  
INNOVATION



# SunTex® 80/90

BY PHIFER

SOLAR OPTICAL PROPERTIES					SHGC/G VALUE g-tot (glass & blind)					
Color	TS	RS	AS	TV	SINGLE			INSULATING		
					1/8 CL	1/4 CL	1/4 HA	1/2 CL	1 CL	1 HA
<b>SUNTEX® 80 30 Degree Profile Angle • Fabrics Installed Externally</b>										
Brown	26	4	70	37	0.30	0.30	0.28	0.26	0.25	0.22
Black	26	4	70	37	0.30	0.30	0.28	0.26	0.25	0.22
Grey	26	23	51	36	0.29	0.28	0.26	0.24	0.23	0.21
Stucco	30	38	32	36	0.30	0.30	0.28	0.26	0.25	0.22
Beige	31	30	39	39	0.32	0.31	0.30	0.28	0.27	0.23
Dark Bronze	26	5	69	38	0.30	0.30	0.28	0.26	0.25	0.22
<b>SUNTEX® 80 75 Degree Profile Angle • Fabrics Installed Externally</b>										
Brown	8	7	85	37	0.13	0.13	0.13	0.09	0.09	0.09
Black	8	6	86	37	0.13	0.13	0.13	0.09	0.09	0.09
Grey	12	27	61	36	0.13	0.13	0.13	0.09	0.09	0.09
Stucco	18	42	40	36	0.15	0.15	0.15	0.09	0.09	0.10
Beige	15	36	49	39	0.14	0.14	0.14	0.09	0.09	0.10
Dark Bronze	8	10	82	38	0.13	0.13	0.13	0.09	0.09	0.09
<b>SUNTEX® 90 30 Degree Profile Angle • Fabrics Installed Externally</b>										
Brown	12	5	83	18	0.19	0.19	0.18	0.16	0.15	0.14
Black	12	4	84	19	0.19	0.19	0.18	0.16	0.15	0.14
Grey	13	27	60	18	0.17	0.17	0.16	0.15	0.14	0.13
Stucco	17	44	39	20	0.19	0.19	0.17	0.16	0.16	0.14
Beige	16	36	48	20	0.19	0.19	0.18	0.16	0.16	0.14
Dark Bronze	12	5	83	18	0.19	0.19	0.18	0.16	0.15	0.14
<b>SUNTEX® 90 75 Degree Profile Angle • Fabrics Installed Externally</b>										
Brown	2	7	91	18	0.10	0.10	0.10	0.07	0.07	0.07
Black	2	6	92	19	0.10	0.10	0.10	0.07	0.07	0.07
Grey	5	27	68	18	0.10	0.10	0.10	0.06	0.06	0.07
Stucco	10	42	48	20	0.10	0.10	0.10	0.07	0.07	0.07
Beige	7	37	56	20	0.10	0.10	0.10	0.06	0.06	0.07
Dark Bronze	2	8	90	18	0.10	0.10	0.10	0.07	0.07	0.07



PRODUCT CERTIFIED FOR  
LOW CHEMICAL EMISSIONS  
UL.COM/GG  
UL 2818



Microban® antimicrobial protection inhibits the growth of stain-causing bacteria, mold and mildew on the shade.



MIF Seal of Approval



TS = Solar Transmittance  
RS = Solar Reflectance  
AS = Solar Absorptance  
TV = Visual Transmittance

SHGC = Solar Heat Gain Coefficient

1/8 CL = 1/8" Clear Glass  
1/4 CL = 1/4" Clear Glass  
1/4 HA = 1/4" Heat Absorbing Glass  
1/2 CL = 1/2" Insulating Clear Glass  
1 CL = 1" Insulating Clear Glass  
1 HA = 1" Insulating Heat Absorbing Glass

The solar optical properties are used to calculate the solar heat gain coefficient (SHGC). The SHGC represents the percentage of solar heat gain that is transmitted to the interior through the glass and shading system. Dark colors provide maximum glare reduction and visibility.

For additional performance values, test references and technical definitions visit us at [www.phifer.com](http://www.phifer.com).

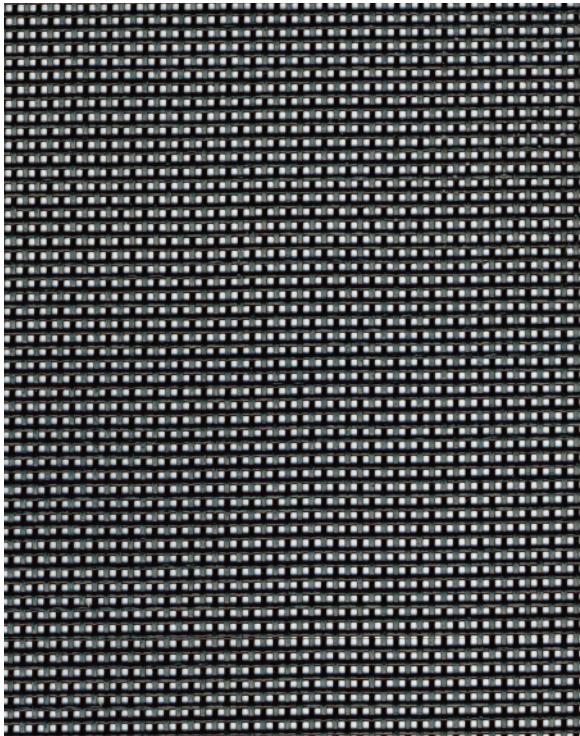




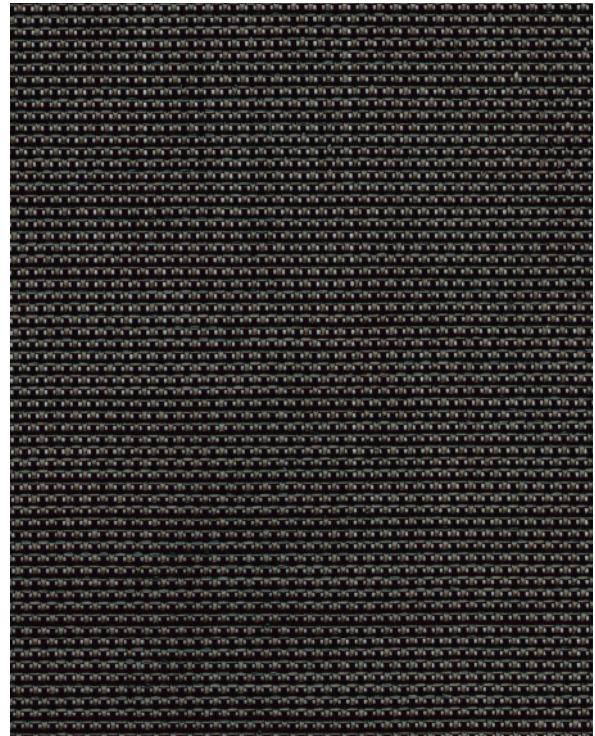
# SUNTEX 80

# SUNTEX 90

Black



Black

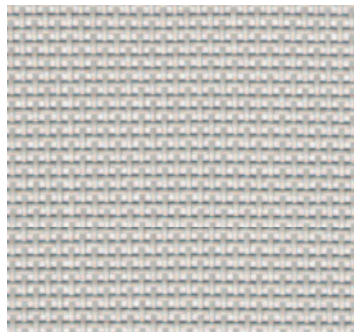


SUNTEX 80 and SUNTEX 90 are also available in the colors shown below.

Brown



Grey



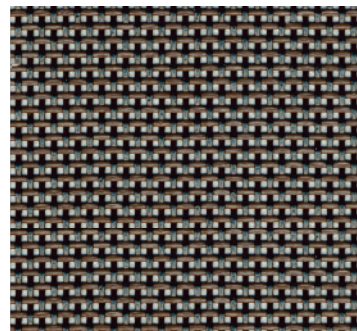
Beige



Stucco



Dark Bronze



\*Colors may vary based on individual computer settings and should only be used for general reference.

# SUNTEX 80/90 SPECIFICATIONS

SunTex exterior shading fabric is made of strong vinyl-coated polyester. Developed originally for use in outdoor furniture, SunTex is mildew and fade resistant and needs only an occasional cleaning with mild soap and water. Ideal for use as a shading fabric on windows, doors and porches, SunTex is also pet resistant.

<b>FIRE CLASSIFICATION</b>	California Technical Bulletin 117-2013 Section 1 IBC Section 803.1.1 (Class A Rating)	CAN/ULC-S 109-03 (large scale) NFPA 101 (Class A Rating)
<b>BACTERIA AND FUNGAL RESISTANCE</b>	ASTM E 2180 Includes Microban antimicrobial additives	ASTM G21
<b>ENVIRONMENTAL CERTIFICATION</b>	GREENGUARD Certified to these standards for low chemical emissions into indoor air during product usage	GREENGUARD Gold
<b>LEAD FREE</b>	RoHS/Directive 2002/95/EC ANSI/WCMA A 100.1-2007 for lead content US Consumer Product Safety Commission Section 101 REACH (EC 1907/2006) compliant	
<b>WARRANTY</b>	10-year exterior	
<b>UV PROTECTION</b>	Seal of Approval by the Melanoma International Foundation (MIF) for effectiveness in preventing sun damage to the skin or eyes (SunTex 90)	

SUNTEX	80	90
<b>WIDTHS</b>	36", 48", 60", 72", and 96" 91.4 cm, 121.9 cm, 152.4 cm, 182.9 cm, and 243.8 cm	36", 48", 60", 72", and 96"; <i>120" in all colors except Grey</i> 91.4 cm, 121.9 cm, 152.4 cm, 182.9 cm, and 243.8 cm; <i>304.8 cm in all colors except Grey</i>
<b>ROLL LENGTH</b>	100 Linear Feet 30.48 m	100 Linear Feet 30.48 m
<b>COMPOSITION</b>	31% Polyester 69% Vinyl on Polyester	31% Polyester 69% Vinyl on Polyester
<b>MESH WEIGHT</b>	13.5 oz/yd <sup>2</sup> 457.73 g/m <sup>2</sup>	17.2 oz/yd <sup>2</sup> 583.18 g/m <sup>2</sup>
<b>FABRIC THICKNESS</b>	0.040 in 1.016 mm	0.039 in 0.991 mm
<b>OPENNESS FACTOR</b>	Approximately 25%	Approximately 10%
<b>UV BLOCKAGE</b>	Approximately 75%	Approximately 90%
<b>BREAKING STRENGTH (LBS)</b>	400 Warp, 380 Fill	480 Warp, 340 Fill
<b>STIFFNESS (MG)</b>	500 Warp, 300 Fill	400 Warp, 310 Fill



P. O. Box 1700 • Tuscaloosa, Alabama 35403 -1700 USA  
 Phone: 205.345.2120 • FAX: 205.391.0799  
 Toll Free USA/Canada: 1.800.221.5497  
 phifer.com • ISO Registered



© SunTex is a registered trademark of PHIFER INCORPORATED.  
 © MICROBAN is a registered trademark of Microban Products Company.  
 ™ UL, the UL logos and the UL mark are trademarks of UL LLC.  
 © PHIFER INCORPORATED V18B 3009031