



STYLE  
3000

---

WEAVING  
EXCELLENCE  
WITH  
INNOVATION



		SOLAR OPTICAL PROPERTIES				SHGC/G VALUE g-tot (glass & blind)	
Code	Color	TS	RS	AS	TV	SINGLE 1/4 CL	INSULATING 1 HA
STYLE 3000 - 14%							
P01	Pearl White	24	62	14	21	0.33	0.23
Q01	Mushroom Sand	22	45	33	21	0.42	0.28
Q02	Custard Cream	23	53	24	22	0.37	0.26
Q04	Chocolate	13	4	83	15	0.63	0.38
Q17	Sand Dollar	17	46	37	15	0.41	0.27
Q18	Espresso	15	9	76	16	0.60	0.37
Q19	Honey Sage	16	31	53	16	0.49	0.31
V01	Pale Grey	19	40	41	19	0.44	0.29
V02	Ninja Grey	12	8	80	14	0.60	0.37



PROTECTION THAT LIVES ON  
**MICROBAN®**  
 Microban® antimicrobial protection inhibits the growth of stain-causing bacteria, mold and mildew on the shade.



PRODUCT CERTIFIED FOR  
 LOW CHEMICAL EMISSIONS  
 UL.COM/GG  
 UL 2818



TS = Solar Transmittance  
 RS = Solar Reflectance  
 AS = Solar Absorptance  
 TV = Visual Transmittance

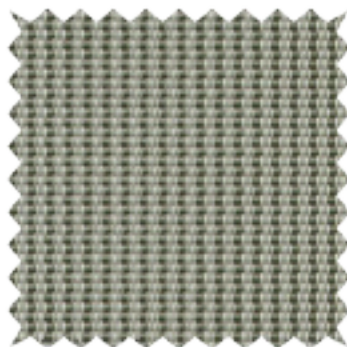
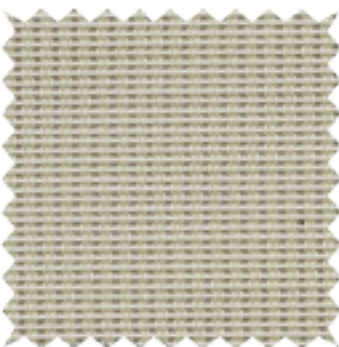
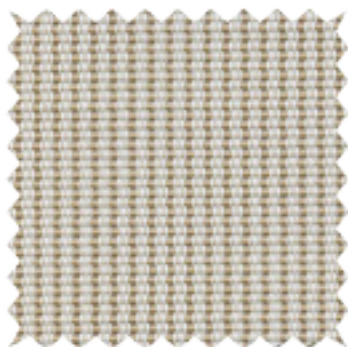
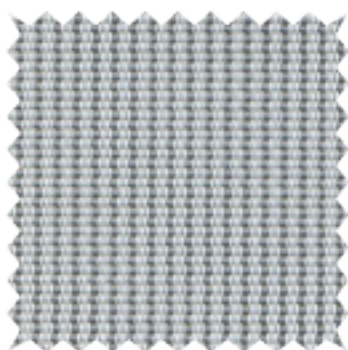
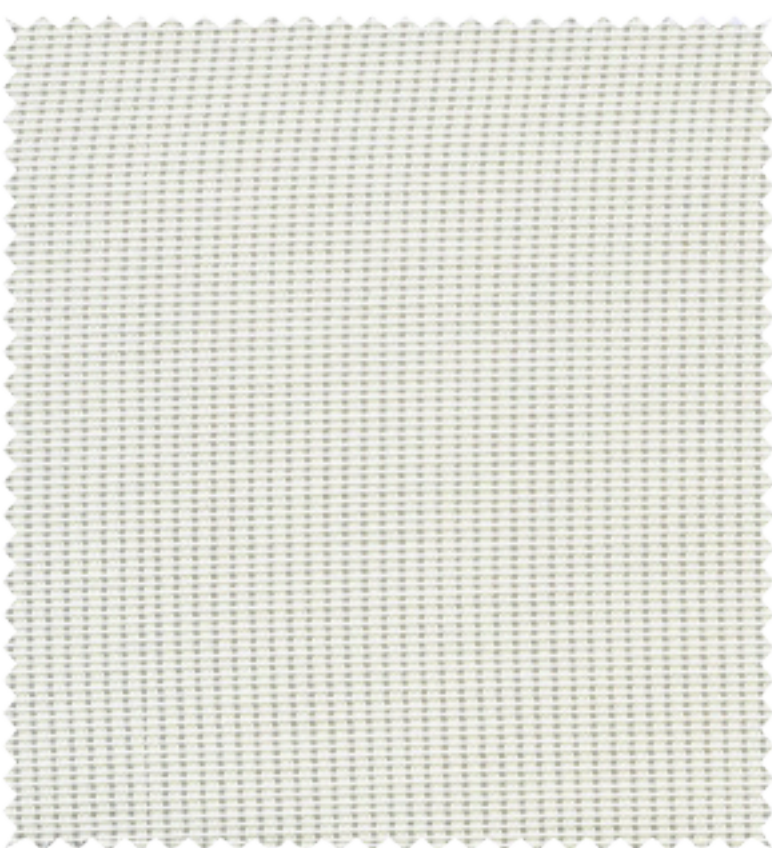
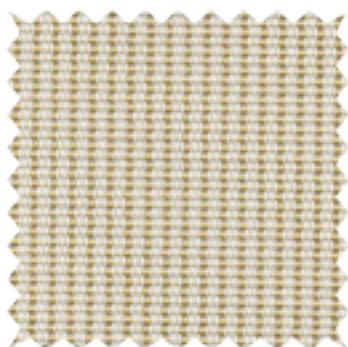
SHGC = Solar Heat Gain Coefficient

1/4 CL = 1/4" Clear Glass  
 1 HA = 1" Heat Absorbing Glass

Fabrics Installed Internally  
 Zero-Degree Profile Angle

For additional performance values, test references and technical definitions visit us at [www.phifer.com](http://www.phifer.com).





# STYLE 3000 SPECIFICATIONS

Combining vinyl coated fiberglass and polyester yarns, Style 3000 is woven into a unique rib weave for a distinct look and color pallet. The 14% openness of Style 3000 lets in more natural light while providing excellent outward visibility. Style 3000 can also be used in exterior shading systems.

<b>FIRE CLASSIFICATION</b>	NFPA 701 TM#1 (small scale) IBC Section 803.1 (Class A Rating)	NFPA 101 (Class A Rating) NFPA 701 TM#2 (large scale)
<b>BACTERIA AND FUNGAL RESISTANCE</b>	ASTM E 2180 ASTM G21 GREENGUARD Mold and Bacteria Standard ASTM 6329 includes Microban antimicrobial additives	AATCC30 Part 3 ASTM D 3273
<b>ENVIRONMENTAL CERTIFICATION</b>	GREENGUARD GREENGUARD Gold Certified to these standards for low chemical emissions into indoor air during product usage	
<b>LEAD FREE</b>	RoHS/Directive 2002/95/EC ANSI/WCMA A 100.1-2007 for lead content US Consumer Product Safety Commission Section 101	REACH (EC 1907/2006) compliant
<b>WARRANTY</b>	10-year interior 5-year exterior	
<b>TRACKLESS</b>	TrackLess Technology minimizes the fiberglass yarns' inherent tendencies to track when being rolled up in a shade. With TrackLess Technology these same fabrics now track less, roll up straighter and reduce shade fabrication time.	

## STYLE 3000

<b>WIDTHS</b>	72" and 96" 182.9 cm and 243.8 cm
<b>ROLL LENGTH</b>	30 Linear Yards 27.4 m
<b>COMPOSITION</b>	35% Fiberglass, 65% Vinyl on Fiberglass 31% Polyester, 69% Vinyl on Polyester
<b>MESH WEIGHT</b>	13.46 oz/yd <sup>2</sup> 456 g/m <sup>2</sup>
<b>FABRIC THICKNESS</b>	0.028 in 0.71 mm
<b>OPENNESS FACTOR</b>	Approximately 14%
<b>UV BLOCKAGE</b>	Approximately 86%

**PHIFER**  
INCORPORATED

P. O. Box 1700 • Tuscaloosa, Alabama 35403-1700 USA  
Phone: 205.345.2120 • FAX: 205.391.0799  
Toll Free USA/Canada: 1.800.221.5497  
phifer.com • ISO Registered



© SheerWeave is a registered trademark of PHIFER INCORPORATED.  
© MICROBAN is a registered trademark of Microban Products Company.  
™ UL, the UL logos and the UL mark are trademarks of UL LLC.  
Photo courtesy of Hunter Douglas, USA.  
© PHIFER INCORPORATED V17 3033838