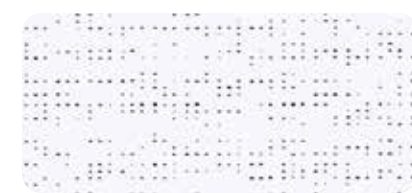


The colors and textures represented in this document are provided as a reference only.



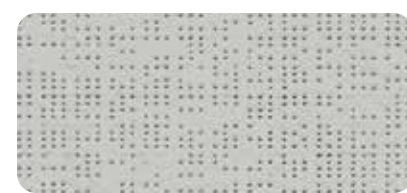
**Bronze** 69.6 in — 105.1 in 92-2043



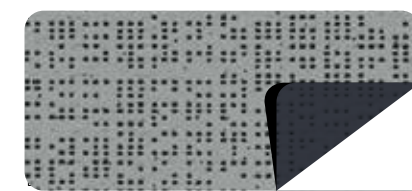
**new Snow white** 69.6 in — 105.1 in 92-50690



**White** 69.6 in — 105.1 in 92-2044



**Boulder** 69.6 in — 105.1 in 92-2171



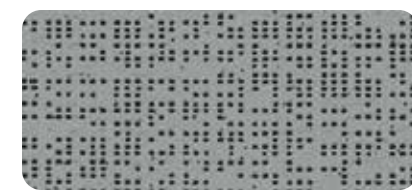
**Alu/Anthracite** 69.6 in 92-2068



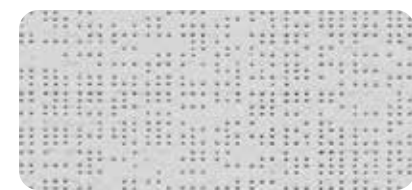
**Sandy beige** 69.6 in — 105.1 in 92-2135



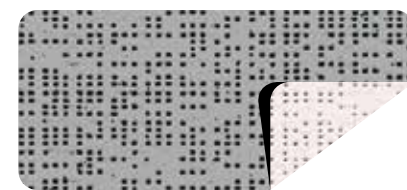
**Alu/White** 69.6 in — 105.1 in 92-2051



**Beaten metal** 69.6 in — 105.1 in 92-2045



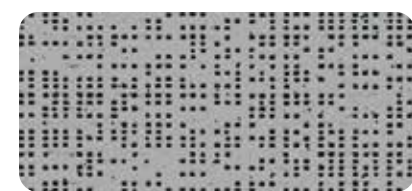
**Cloud** 69.6 in — 105.1 in 92-50272



**Alu/Oat** 69.6 in — 105.1 in 92-2046



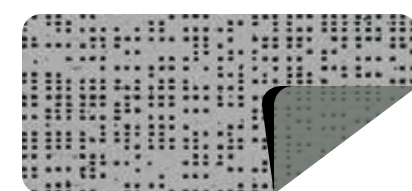
**Concrete** 69.6 in — 105.1 in 92-2167



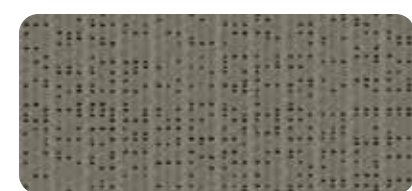
**Alu/Alu** 69.6 in — 105.1 in 92-2048



**Anthracite** 69.6 in — 105.1 in 92-2047



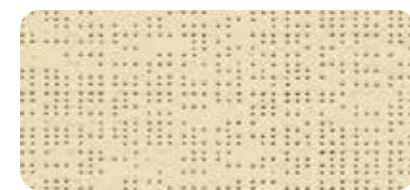
**Alu/Medium grey** 69.6 in — 105.1 in 92-2074



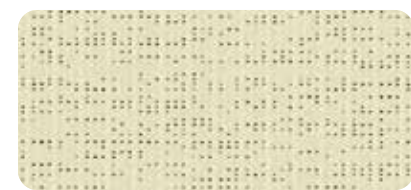
**new Dark grey** 69.6 in — 105.1 in 92-51177



**new True black** 69.6 in — 105.1 in 92-51176



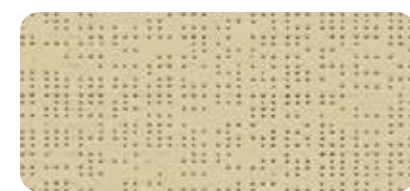
**Champagne** 69.6 in — 105.1 in 92-2175



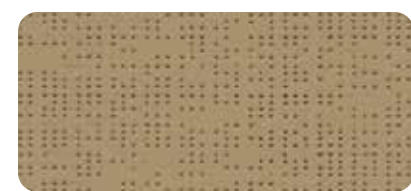
**new Quartz** 69.6 in — 105.1 in 92-50303



**new Shea** 69.6 in — 105.1 in 92-50843



**Hemp** 69.6 in — 105.1 in 92-50265



**Pepper** 69.6 in — 105.1 in 92-2012



**Gold** 69.6 in 92-50273



**Havana-Brown** 69.6 in 92-50266



**Bronze** 69.6 in — 105.1 in 92-2043



**Beetle** 69.6 in 92-2149



**new Taupe** 69.6 in — 105.1 in 92-50850



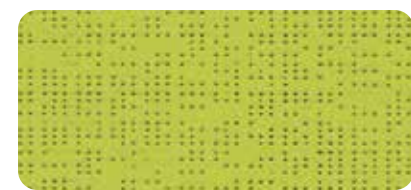
**Moss green** 69.6 in 92-2158



**new Tennis green** 69.6 in 92-8056



**new Green-grey** 69.6 in 92-51179



**Aniseed** 69.6 in 92-2157



**Lagoon** 69.6 in 92-2160



**new Celestial grey** 69.6 in 92-51178



**new French blue** 69.6 in 92-51182



**Buttercup** 69.6 in 92-2166



**Orange** 69.6 in 92-8204



**Copper** 69.6 in 92-50274



**new Brick** 69.6 in 92-51180



**Red** 69.6 in 92-8255



**new Deep red** 69.6 in 92-51181

**new Colors Collection**



A range of colors to match all your projects

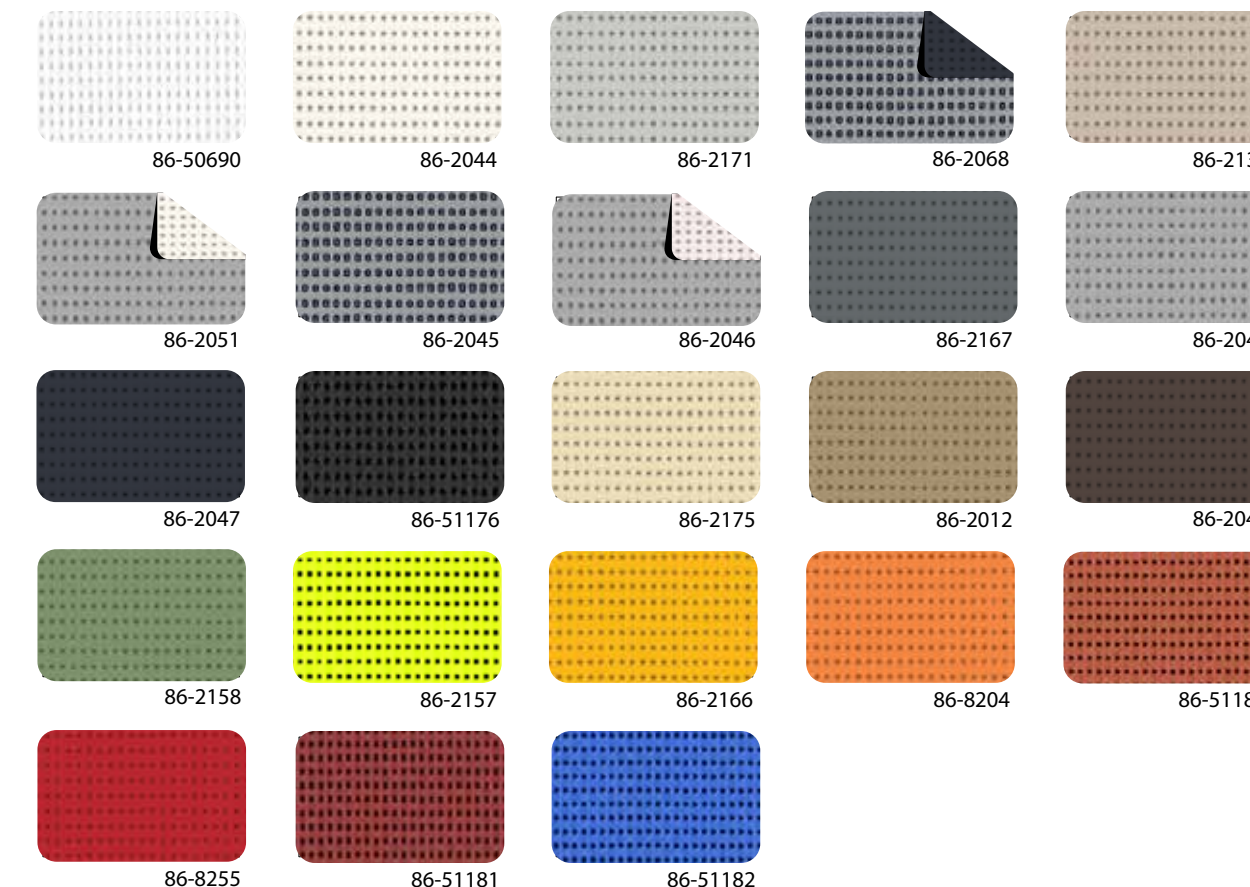
The new Soltis Perform 92 range features colors chosen by our design team to coordinate with the entire building's environment (entry, windows and facade). These are the most common colors based on RAL and NCS references.



**Download** our RAL and NCS equivalency library

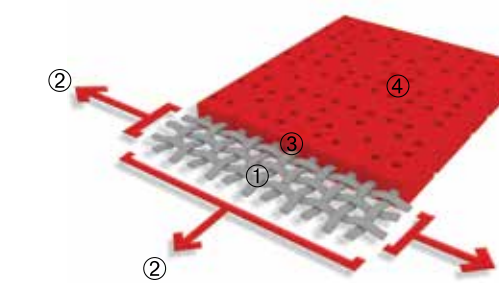


**Matching colors with Soltis Horizon 86**



**Exclusive Précontraint® technology**

Patented worldwide, the Précontraint® technology by Serge Ferrari involves keeping the composite under tension throughout the manufacturing process. This gives our materials exceptional performance that enables them to surpass market standards in terms of dimensional stability, mechanical strength, coating thickness and flatness.



High-tenacity polyester micro-yarn base cloth	1	Superior elongation and tear resistance
A coating with fabrics under bi-axial constant tension in both warp and weft directions	2	No deformation during processing and use
Thicker coating at the top of the yarns and a dirt resistant surface treatment	3	Superior aesthetic and mechanical durability
Exceptional flatness and thinness	4	Smooth easy to clean finish, space saving, easy rolling

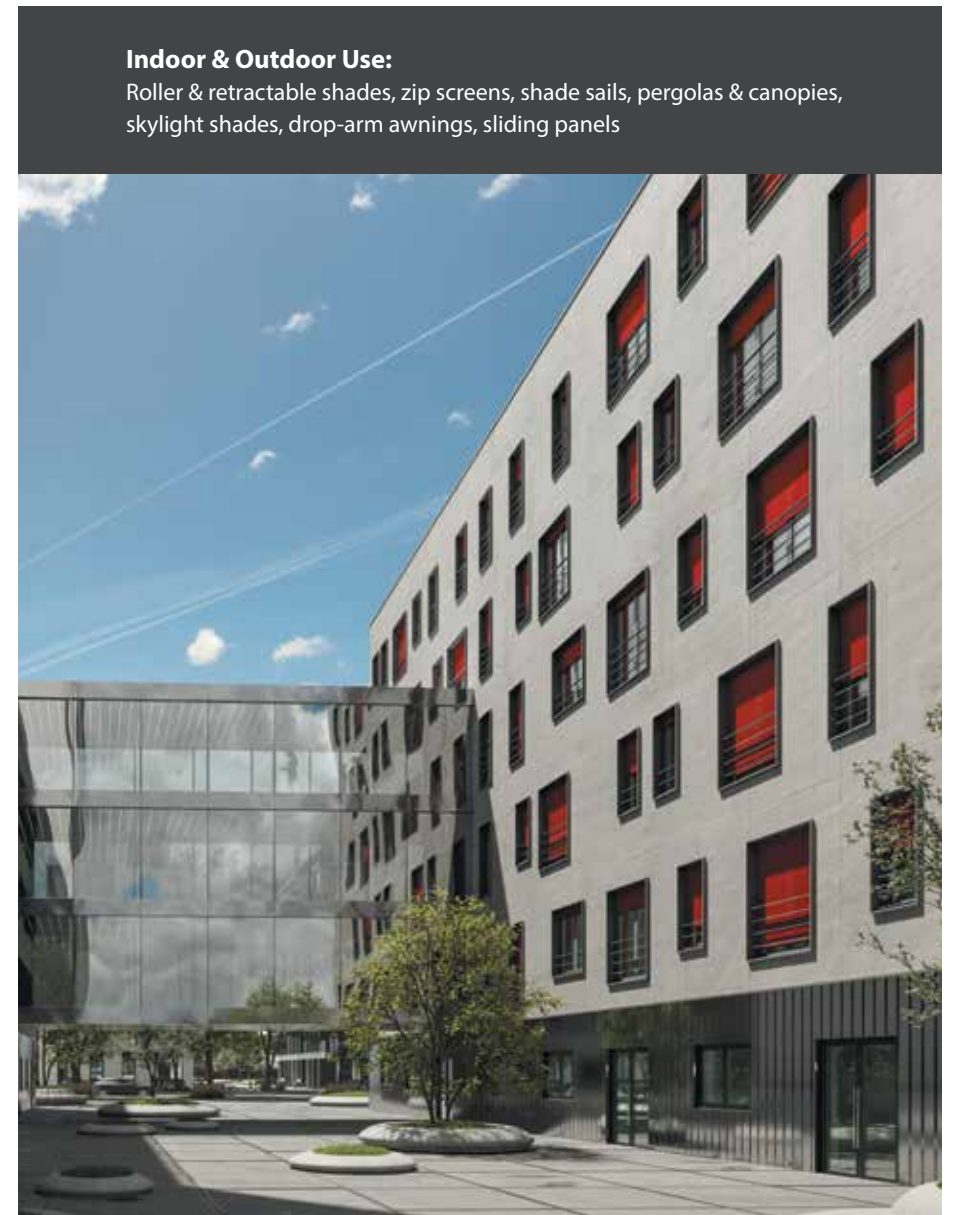
■ **Solar and light properties** (according to EN 14501)

	Width (in)	TS	RS	AS	TV n-h	EN 13363-2* Glazing D	
						g <sub>ext</sub>	g <sub>int</sub>
92-2012	69	7	30	63	6	0.04	0.24
92-2043	105	4	13	83	4	0.04	0.28
92-2044	69	19	68	13	17	0.07	0.11
92-2045	69	4	35	61	4	0.03	0.22
92-2046 A	69	12	46	42	10	0.05	0.18
92-2046 B	69	12	63	25	10	0.05	0.14
92-2047	69	5	8	87	5	0.04	0.28
92-2048	69	8	46	46	8	0.04	0.18
92-2051 A	69	12	49	39	11	0.06	0.17
92-2051 B	69	12	70	18	11	0.05	0.10
92-2068 A	69	4	34	62	4	0.03	0.22
92-2068 B	69	4	8	88	4	0.04	0.28
92-2074 A	69	4	37	59	4	0.03	0.21
92-2074 B	69	4	25	71	4	0.03	0.24
92-2135	69	11	46	43	8	0.04	0.19
92-2149	69	5	16	79	4	0.04	0.27
92-2157	69	15	51	34	10	0.05	0.20
92-2158	69	7	28	65	5	0.03	0.24
92-2160	69	11	36	53	5	0.04	0.24
92-2166	69	21	54	25	17	0.07	0.19
92-2167	69	6	19	75	5	0.04	0.26

A: Aluminum side exposed to the sun  
 B: Colored side exposed to the sun  
 TS: Solar Transmission in %  
 RS: Solar Reflection in %  
 AS: Solar absorption in %

TS+RS+AS = 100% of the incident energy  
 TV n-h: Normal Visible light transmission - hemispherical in %  
 g<sub>ext</sub>: External Solar Factor  
 g<sub>int</sub>: Indoor Solar Factor

\* Detailed EN 13363-2 method  
 Takes into account the spectral values of glazing transmission and reflection + blind complex for calculating the solar factor g<sub>tot</sub>. Type "D" glazing: insulating double glazing with low emissivity on surface 2 (4 + 16 + 4; Argon filling) g = 0.32 - U = 1.1



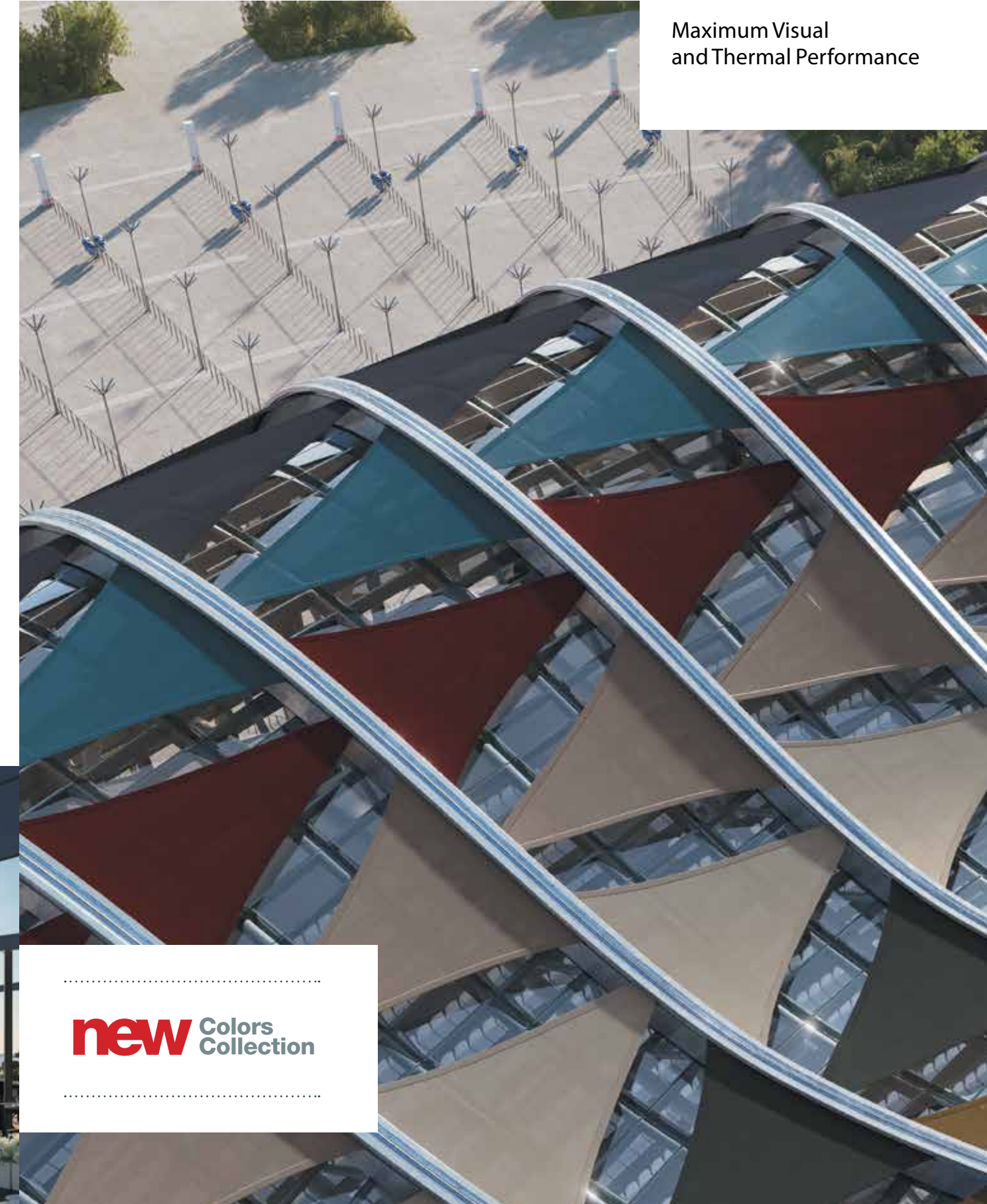
**Indoor & Outdoor Use:**  
 Roller & retractable shades, zip screens, shade sails, pergolas & canopies, skylight shades, drop-arm awnings, sliding panels

■ **Blocks up to 97% of heat**  
 Soltis Perform 92 acts as a heat shield. Its micro-vents filter the heat, reducing a building's energy costs.

■ **Glare control with a view**  
 Providing maximum comfort with transparency, Soltis Perform 92's thermal and optical performance earns building certification points (LEED, BREEAM, Minergie, HQE, etc.).

■ **High color resistance over time**  
 Color is preserved even after several years of exposure (according to the ISO 105 A02 scale).

**Maximum Visual and Thermal Performance**



**new** Colors Collection

**4x MORE RESISTANT**  
 Soltis Perform 92's resistance delivers greater durability than standard fabrics to provide you with better performance over a longer period of time.

**2x THINNER**  
 A reduced thickness compared with standard fabrics enhances facade appearance, reducing bulk even with extended shade heights.

**3 key properties of Soltis Perform 92**

- Dimensional stability** thanks to Preconstraint technology
- Easy to clean**
- UV resistance**

	Technical properties	Standards
Openness factor	4%	
Weight	12.3 oz/yd <sup>2</sup>	EN ISO 2286-2
Thickness	0.45 mm	
Width	69.6 in - 105.1 in	
■ <b>Length of rolls</b>		
Standard length in 69.6 in	54.6 yds	
Standard length in 105.1 in	43.7 yds	
■ <b>Physical properties</b>		
Tensile strength (warp/weft)	310/210 daN/ 5 cm	EN ISO 1421
Tear strength (warp/weft)	45/20 daN	DIN 53.363
■ <b>Flame retardancy</b>		
Rating	<b>Method 1/NFPA 701 — T19 / CSFM — Class A/ASTM E84 — M1/NFP 92-507 — B1/DIN 4102-1 BS 7837 — BS 5867 — Schwerbrennbar-Q1-Tr1/ONORM A 3800-1 — Class 1/EN 13373 M1/UNE 23.727-90 — VKF 5.3/SN 198898 — 1530.3/AS/NZS — G1/GOST 30244-94</b>	
Euroclass	<b>B-s2,d0</b>	EN 13501-1
■ <b>Management systems</b>		
Quality	ISO 9001	
■ <b>Certifications, labels, guarantees, recycling</b>		
■ <b>Tools and services</b>		
	<ul style="list-style-type: none"> <li>— ACV and FDES available upon request</li> <li>— Personalized thermal performance simulation service available for your projects with Soltis solar protection: contact your Serge Ferrari representative</li> <li>— Tool for assessing achievable energy savings thanks to Soltis sun protection: <a href="http://www.textinerjie.org">www.textinerjie.org</a></li> <li>— Documents and photo libraries: <a href="http://www.sergeferrari.com/us">www.sergeferrari.com/us</a></li> </ul>	

The technical data above are average values with a +/- 5% tolerance. The buyer of our products is fully responsible for their application or their transformation concerning any possible third party. The buyer of our products is responsible for their implementation and installation in compliance with standards, codes of practice and safety regulations in force in destination countries. For information on our contractual warranty, please refer to the relevant terms and conditions. The values quoted above represent results of tests performed in compliance with common design practices and are provided for information only to enable customers to make the best use of our products. Our products are subject to changes prompted by technological developments. We reserve the right to modify their characteristics at any time. The buyer of our products is responsible for checking the validity of the above data.

For metallic and interferential colors, a difference in shade may be observed in different roll widths for the same reference: small width (69.6 in) and large width (105.1 in). We advise strongly against combined assembly of these.

Soltis and Preconstraint are registered trademarks of Serge Ferrari. Ref: CT-01-17-FEBRUARY 2017 V1.01