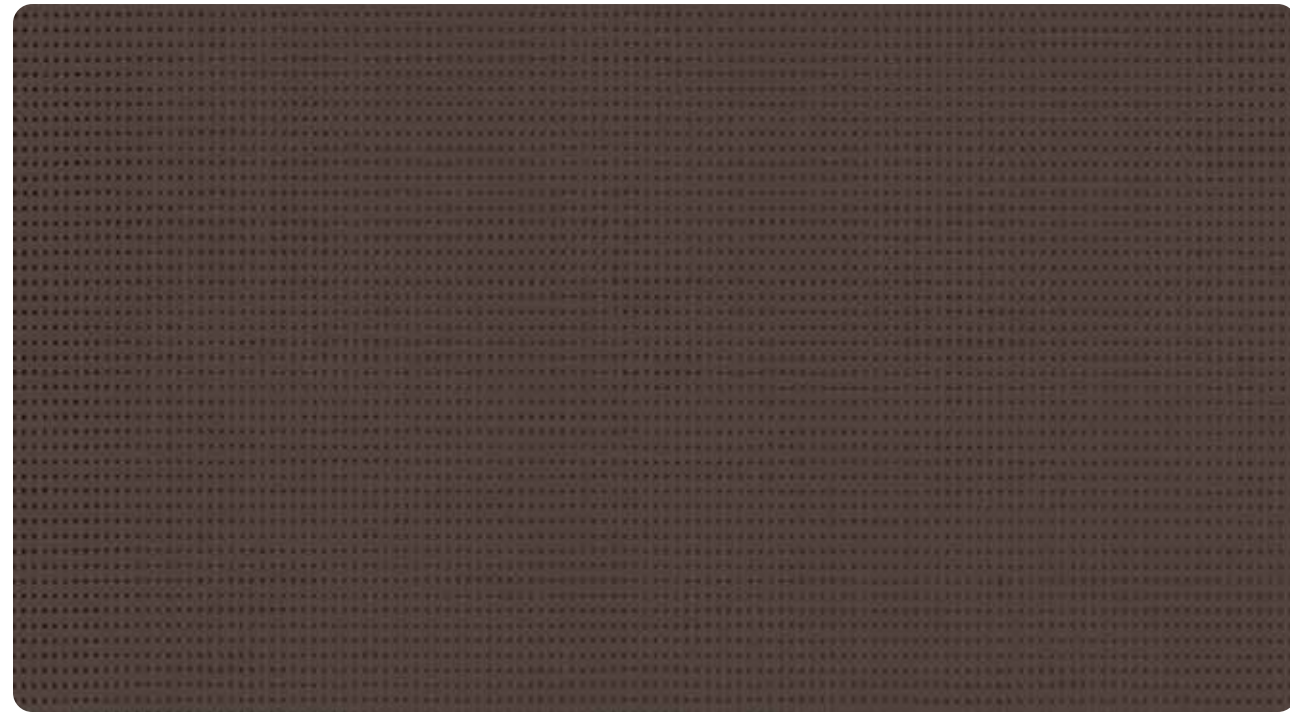
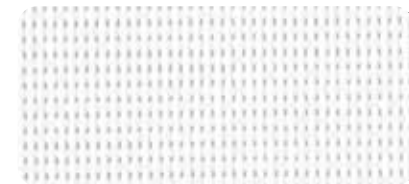


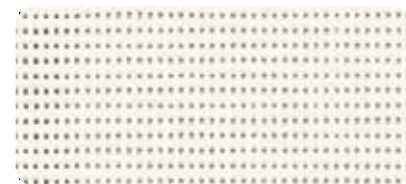
The colors and textures represented in this document are provided as a reference only.



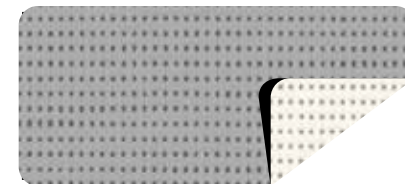
Bronze 69.6 in — 105.1 in 86-2043



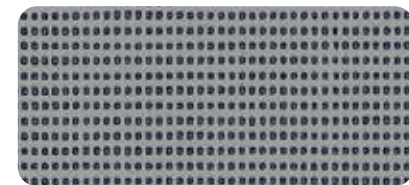
Snow white 69.6 in — 105.1 in 86-50690



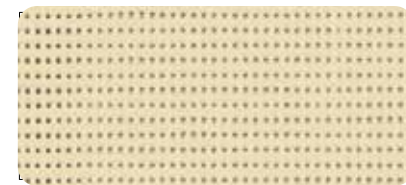
White 69.6 in — 105.1 in 86-2044



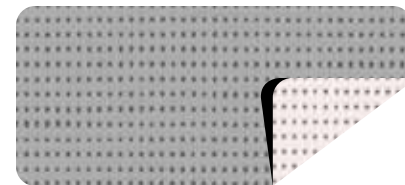
Alu/White 69.6 in — 105.1 in 86-2051



Beaten-metal 69.6 in — 105.1 in 86-2045



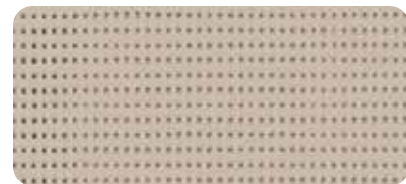
Champagne 69.6 in — 105.1 in 86-2175



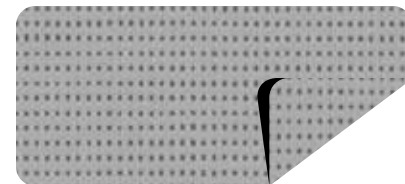
Alu/Oat 69.6 in — 105.1 in 86-2046



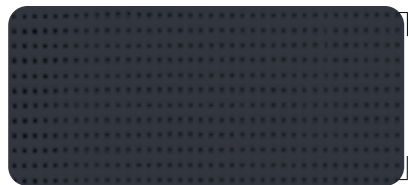
Concrete 69.6 in — 105.1 in 86-2167



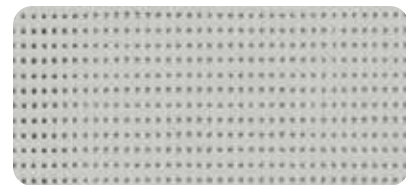
Sandy beige 69.6 in — 105.1 in 86-2135



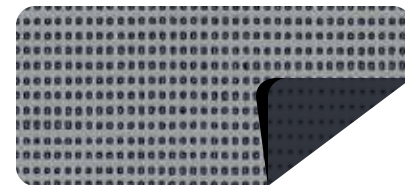
Alu/Alu 69.6 in — 105.1 in 86-2048



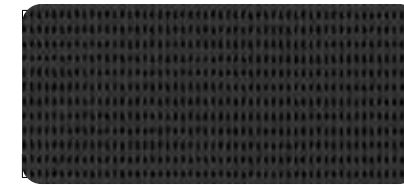
Anthracite 69.6 in — 105.1 in 86-2047



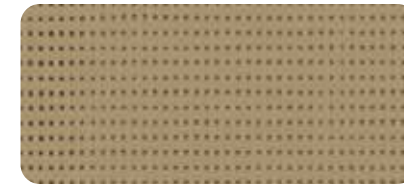
Boulder 69.6 in — 105.1 in 86-2171



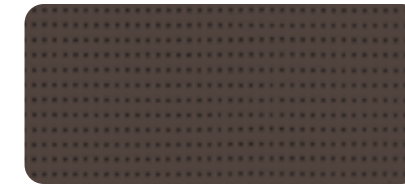
Alu/Anthracite 69.6 in 86-2068



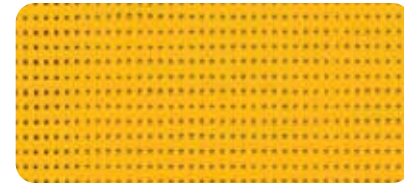
new True black 69.6 in — 105.1 in 86-51176



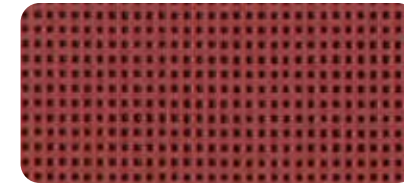
Pepper 69.6 in — 105.1 in 86-2012



Bronze 69.6 in — 105.1 in 86-2043



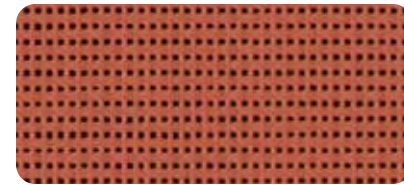
Buttercup 69.6 in 86-2166



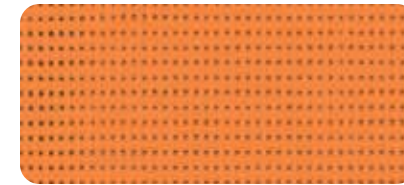
new Deep red 69.6 in 86-51181



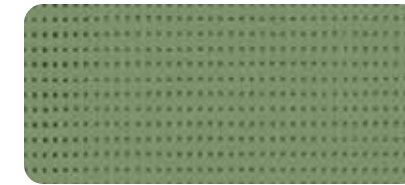
Red 69.6 in 86-8255



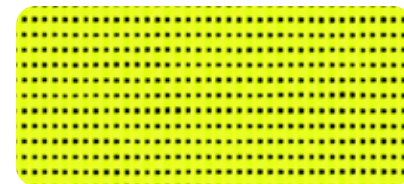
new Brick 69.6 in 86-51180



Orange 69.6 in 86-8204



Moss green 69.6 in 86-2158



new Aniseed 69.6 in 86-2157



new French blue 69.6 in 86-51182

new Colors Collection



A range of colors to match every kind of project

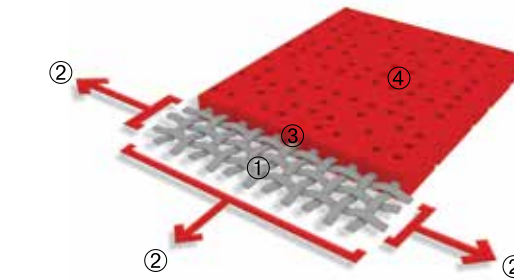
The new Soltis Horizon 86 range features colors chosen by our design team to coordinate with the entire building's environment (entry, windows and facade). These are the most common colors based on RAL and NCS references.



Download our RAL and NCS equivalency library

Exclusive Précontraint® technology

Patented worldwide, the Précontraint® technology by Serge Ferrari involves keeping the composite under tension throughout the manufacturing process. This gives our materials exceptional performance that enables them to surpass market standards in terms of dimensional stability, mechanical strength, coating thickness and flatness.



High-tenacity polyester micro-yarn base cloth	①	Superior elongation and tear resistance
A coating with fabrics under bi-axial constant tension in both warp and weft directions	②	No deformation during processing and use
Thicker coating at the top of the yarns and a dirt resistant surface treatment	③	Superior aesthetic and mechanical durability
Exceptional flatness and thinness	④	Smooth easy to clean finish, space saving, easy rolling

Solar and light properties (according to EN 14501)

	Width (in)		TS	RS	AS	TV n-h	EN13363-2* Glazing D	
	69.6	105.1					g _{tot} ^e	g _{tot} ⁱ
86-2012	•	•	18	27	55	16	0.08	0.24
86-2043	•	•	15	11	74	15	0.07	0.28
86-2044	•	•	29	59	12	28	0.11	0.15
86-2045	•	•	16	29	55	16	0.08	0.23
86-2046A	•	•	22	40	38	21	0.1	0.16
86-2046B	•	•	22	55	23	21	0.09	0.20
86-2047	•	•	17	7	76	17	0.07	0.28
86-2048	•	•	19	39	42	19	0.09	0.20
86-2051 A	•	•	22	40	38	20	0.09	0.13
86-2051 B	•	•	22	60	18	20	0.09	0.20
86-2068 A	•	•	17	31	52	17	0.08	0.23
86-2068 B	•	•	17	7	76	17	0.09	0.28
86-2135	•	•	24	39	37	22	0.09	0.21
new 86-2157	•	•	25	44	31	21	0.08	0.21
86-2158	•	•	18	25	57	16	0.08	0.25
86-2166	•	•	31	45	24	28	0.11	0.21
86-2167	•	•	17	14	69	17	0.07	0.26
86-2171	•	•	22	36	42	20	0.08	0.21
86-2175	•	•	30	57	13	28	0.11	0.16
86-8204	•	•	29	41	30	21	0.1	0.23
86-8255	•	•	21	24	55	14	0.07	0.27
86-50690	•	•	28	61	11	27	0.11	0.14
new 86-51176	•	•	14	5	81	14	0.07	0.29
new 86-51180	•	•	17	24	59	15	0.07	0.26
new 86-51181	•	•	18	14	68	16	0.08	0.28
new 86-51182	•	•	18	23	59	15	0.07	0.27

A: Aluminum side exposed to the sun
B: Colored side exposed to the sun
TS: Solar Transmission in %
RS: Solar Reflection in %
AS: Solar absorption in %

TS + RS + AS = 100% of the incident energy
TV n-h: Normal Visible light transmission - hemispherical in %
g_{tot}^e: External Solar Factor
g_{tot}ⁱ: Indoor Solar Factor

* Detailed EN 13363-2 method

Takes into account the spectral values of glazing transmission and reflection + blind complex for calculating the solar factor g_{tot}. Type 'D' glazing: insulating double glazing with low emissivity on surface 2 (4 + 16 + 4; Argon filling) g = 0.32 - U = 1.1

Indoor & Outdoor Use:

Roller & retractable shades, zip screens, shade sails, pergolas & canopies, skylight shades, drop-arm awnings, sliding panels



BLOCKS UP TO
93%
OF THE HEAT

NATURAL LIGHT
TRANSMISSION
UP TO
28%

3 key properties of Soltis Horizon 86



Transparency and Natural Light



new Colors Collection

■ Highest view-through

Soltis® Horizon 86 offers excellent outward visibility so the view can be enjoyed even when shades are closed. It effectively blocks up to 93% of the heat when installed on the outside of a building.

■ Maximum daylighting

Soltis Horizon 86 provides more natural light, contributing to significant benefits:

- saves energy by requiring less artificial light
- improves health, well-being and productivity

■ Coordinated ranges

All Soltis Horizon 86 colors coordinate with Soltis Perform 92 to:

- coordinate all facades of a building
- ensure ideal visual comfort of all facade orientations
- adjust thermal protection to maximize energy savings

	■ Technical properties	Standards
Openness factor	14%	
Weight	11.2 oz/yd ²	EN ISO 2286-2
Thickness	0.45 mm	
Width	69.6 in - 105.1 in	

	■ Length of rolls	
Standard length in 69.6 in	54.6 yds	
Standard length in 105.1 in	43.7 yds	

	■ Physical properties	
Tensile strength (warp/weft)	230/160 daN/5 cm	EN ISO 1421
Tear strength (warp/weft)	45/20 daN	DIN 53.363

	■ Flame retardancy	
Rating	Method 1/NFPA 701 — Class A/ASTM E84 — T19/CSFM — M1/NFP 92-507 — B1/DIN 4102-1 BS 7837 — BS 5867 — Schwerbrennbar-Q1-Tr1/ONORM A 3800-1 — Class 1/EN 13373 M1/UNE 23.727-90 — VKF 5.3/SN 198898 — 1530.3/AS/NZS — G1/GOST 30244-94	

	■ Management systems	
Euroclass	B-s2,d0	EN 13501-1

	■ Certifications, labels, warranties, recycling	
Quality		ISO 9001



- Tools and services**
- ACV and FDES available upon request
 - Personalized thermal performance simulation service available for your projects with Soltis solar protection: contact your Serge Ferrari representative
 - Tool for assessing achievable energy savings thanks to Soltis sun protection: www.textinergie.org
 - Documents and photo libraries: www.sergeferrari.com/us

The technical data above are averaged values with a +/- 5% tolerance. The buyer of our products is fully responsible for their application and their transformation with regard to any possible third party. The buyer of our products is responsible for their implementation and installation according to the standards, workmanship and safety regulations in force in destination countries. For information on our contractual warranty, please refer to the relevant terms and conditions. The values quoted above represent results of tests performed in compliance with common design practices and are provided for information only to enable customers to make the best use of our products. Our products are subject to changes based on technical advances and we reserve the right to modify their characteristics at any time. The buyer of our products is responsible for checking the validity of the above data.

For metallic and interferential colors, a difference in shade may be observed in different roll widths for the same reference: small width (69.6 in) and large width (105.1 in). We advise strongly against combined assembly of these.