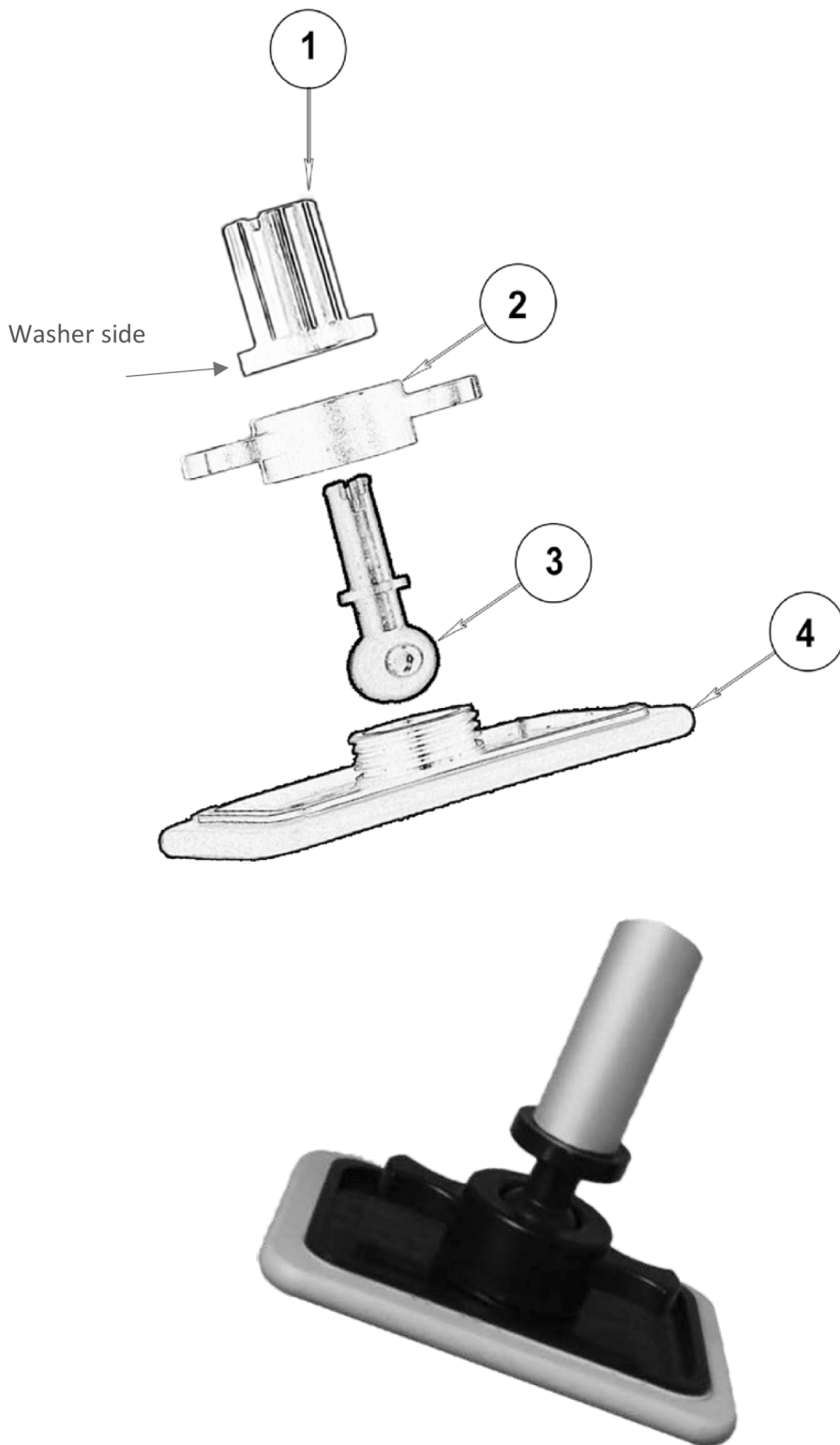


Swivel Pole Base Installation Instructions



1. Hold the nut (#2) with the threads facing away from your hand.
2. Insert the stem of the ball (#3) through the hole in the (#2) nut.
3. Partially insert the stem and nut (#3,2) about a 1/4" into the washer side of the bushing (#1).
4.
 - a. Remove the crutch tip from the outer pole to reveal the plug tip.
 - b. To remove the plug tip, open the cam-lock collar. Push the inner tube down to knock out the plug. You may have to use some force.
 - c. Using a rubber mallet, hammer the assembly (#1,2,3) into the end of the outer pole.
5. Once fully inserted into the pole, screw the nut (#2) the base (#4) together.