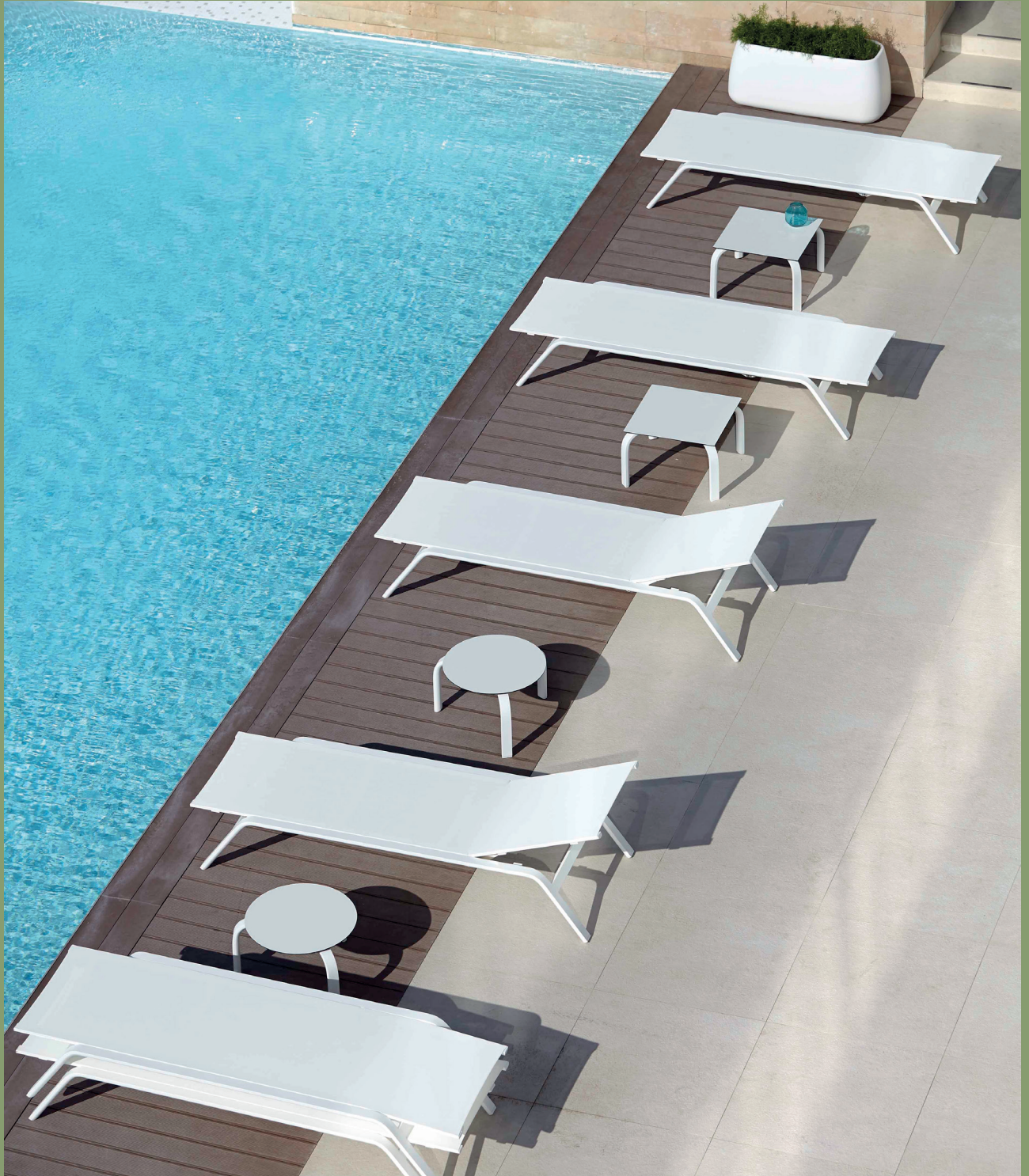


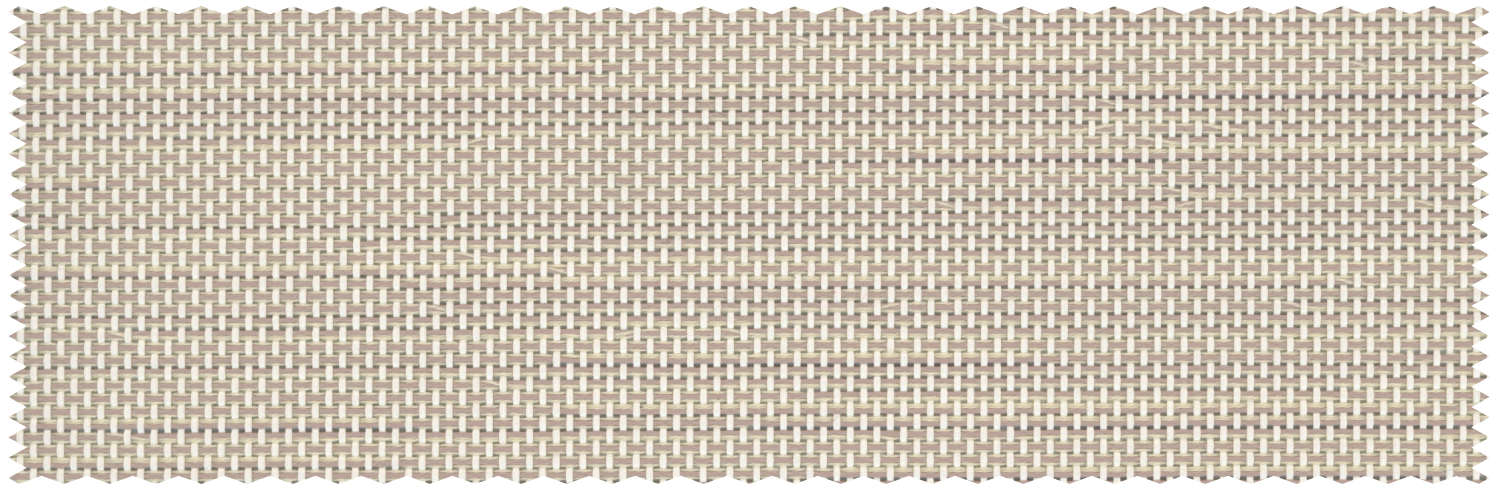
Batyline

Eden & Elios Sling | Outdoor
comfort

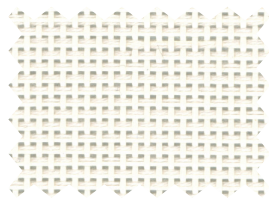


Batyline Eden

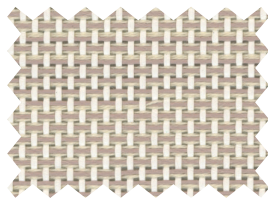
Eden



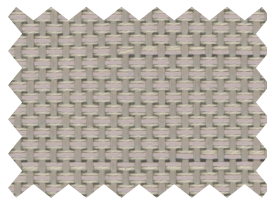
Clay 7710-51030



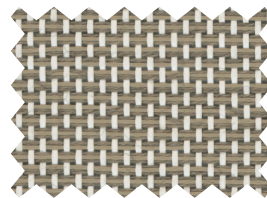
Iceberg 7710-50718



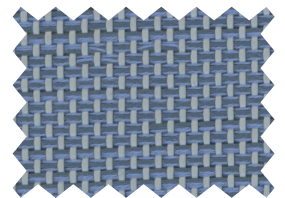
Clay 7710-51030



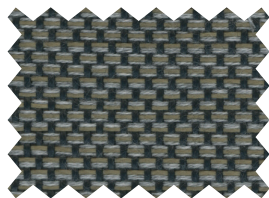
Eglantine 7710-50969



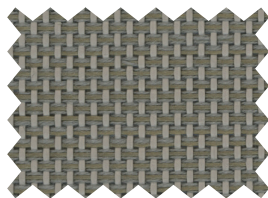
Porcelain 7710-50719



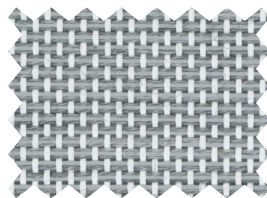
Ice cube 7710-50965



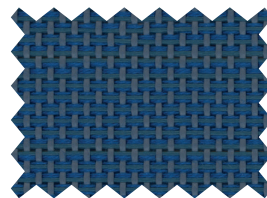
Frozen brown 7710-50554



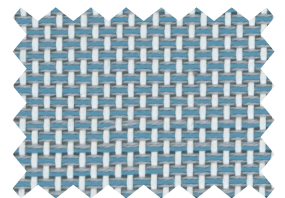
Nutmeg 7710-50563



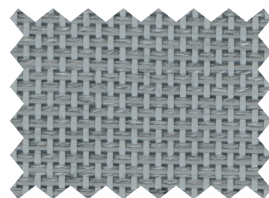
Light grey 7710-50567



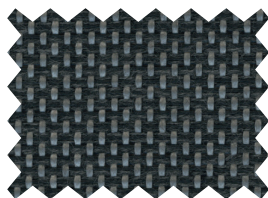
Meridian 7710-50973



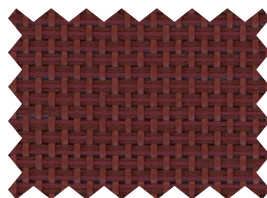
Ceramic Blue 7710-51032



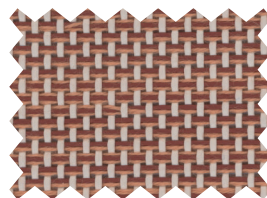
Pebble 7710-50566



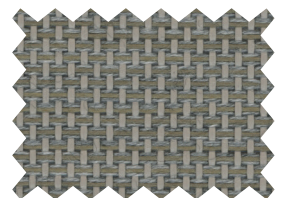
Steel 7710-50720



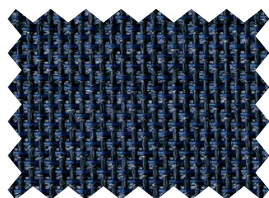
Berry 7710-50972



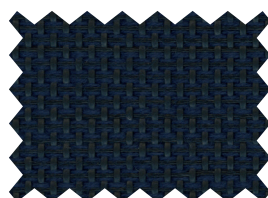
Ocre 7710-51031



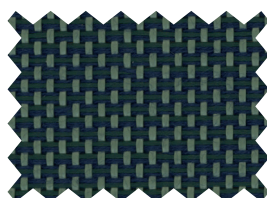
Beige grey 7710-50561



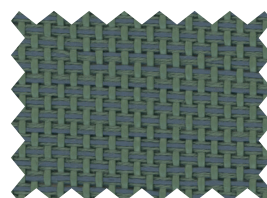
Grey blue 7710-50553



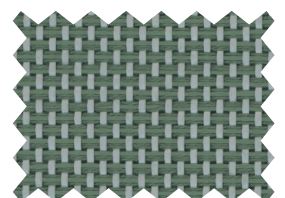
Midnight 7710-50557



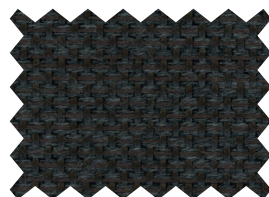
Crocodile 7710-50971



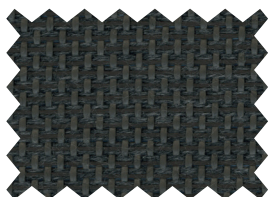
Almond tree 7710-50970



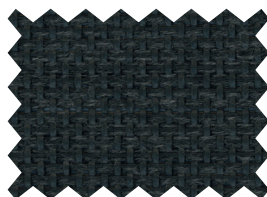
Stem 7710-50967



Dark Chocolate 7710-50740

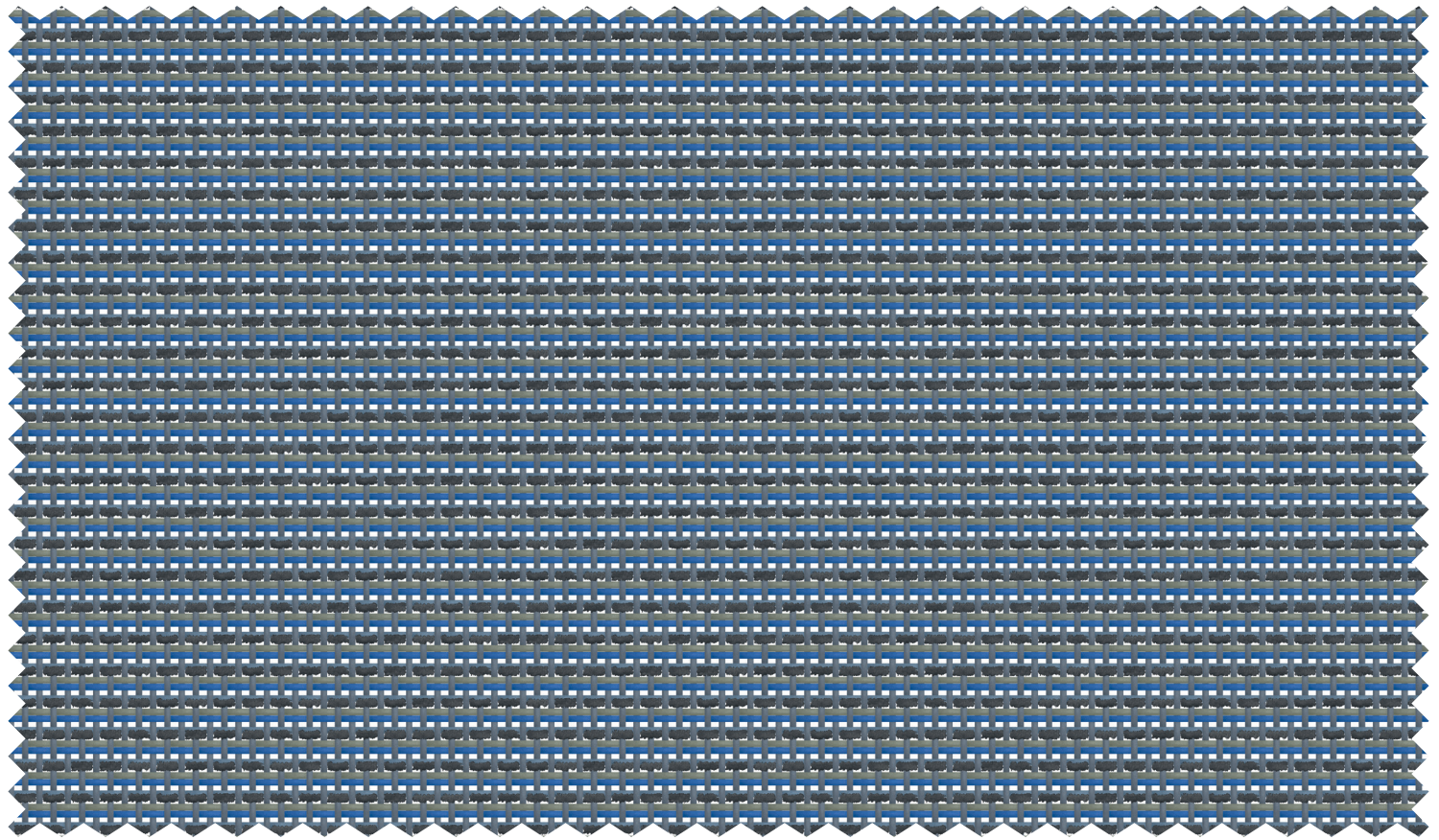


Dark brown 7710-50560



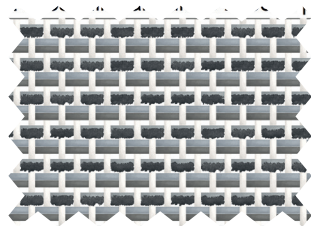
Shadow 7710-50555

Elios Sling



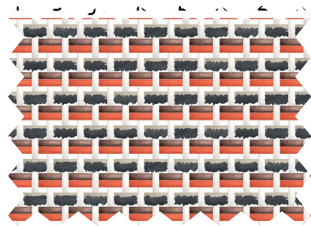
Azurite

7747-52086



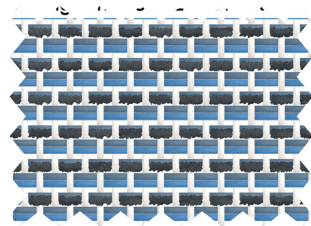
Pyrite

7747-52090



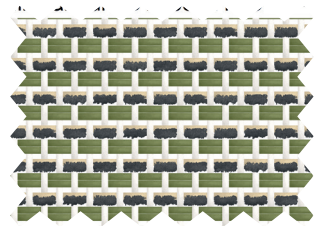
Jasper

7747-52081



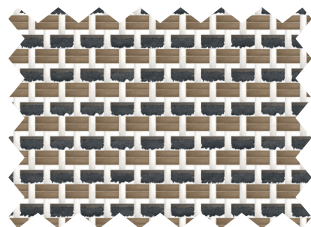
Cobalt

7747-52083



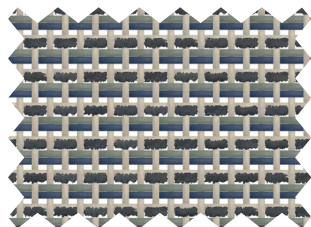
Epidote

7747-52084



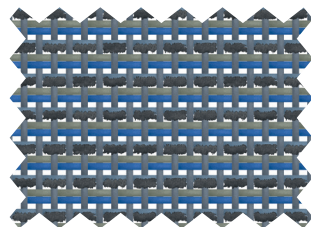
Smokey quartz

7747-52082



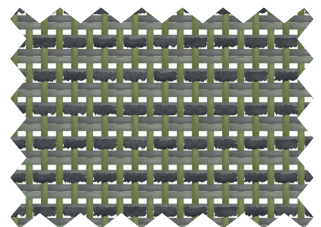
Satellite

7747-52085



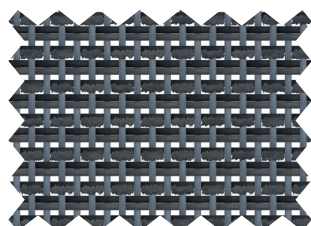
Azurite

7747-52086



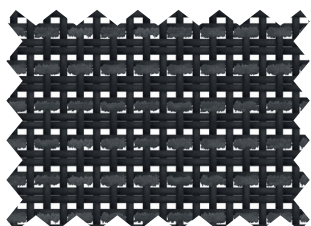
Serpentine

7747-52087



Galaxite







7747-52088



Onyx

7747-52089

Batyline | Eden & Elios Sling

	Batyline Elios Sling 7747	Batyline Eden 7710	
			Standards
Weight	510 g/m ² 15 oz/sqyd	460 g/m ² 13.3 oz/sqyd	EN ISO 2286-2
Width	180 cm • 70.9 in.	180 cm • 70.9 in.	
Openess factor	17%	8%	EN 410
■ Mechanical properties			
Tensile strength (warp/weft)	240/250 daN/5 cm	240/150 daN/5 cm	EN ISO 1421
Tear strength (warp/weft)	35/40 daN	40/30 daN	DIN 53.363
Elongation under load 20 daN (warp/weft)	≤ 2.5% / ≤ 2.5%	≤ 2.5% / ≤ 4%	EN ISO 1421
Abrasion resistance	>50,000 cycles >600,000 double rubs - Heavy Duty	50,000 cycles 400,000 double rubs - Heavy Duty	EN ISO 12947-2 Martindale ASTM D4157 Wyzenbeek
Mould resistance	Method A, Excellent		EN ISO 846-A
Extreme working temperatures	-10°C / +70°C -14°F / +158°F	-30°C / +70°C -22°F / +158°F	
Pilling test		4	EN ISO 12945-2
Light fastness	8/8 for 1,000 h		NF EN ISO 105-B02
Weather resistance	7/8 for 1,000 h		NF EN ISO 105-B04
	GS = 4 for 700 h		ASTM G154
■ Flame retardancy			
Rating	Pass	/	IMO MSC.307(88) (2010FTP Code) Annex 1 Part 8
			EN 102118:2
			NFPA 260
			Cal TB117
■ Management systems			
Quality			ISO 9001
Environment			ISO 14001
Energy			ISO 50001
■ Certifications, labels, warranty			
			 * For 7740 & 7710FR
		 STANDARD 100 www.oeko-tex.com	 CO 693/14 IFTH
			5-year warranty
			

¹ Logo "+=0": summarises the Serge Ferrari Group's commitment to CSR, to align economic performance and positive impact. Find out about our concrete actions in our CSR report.

A customisation service is available under certain conditions, please contact your local sales representative for more information. Quoted technical characteristics are average values with a +/- 5% tolerance. Our products are subject to improvements resulting from technical developments and we reserve the right to modify their characteristics at any time. The purchaser of our products is responsible for checking the above data. A maintenance and spot cleaning guide is available on request.