

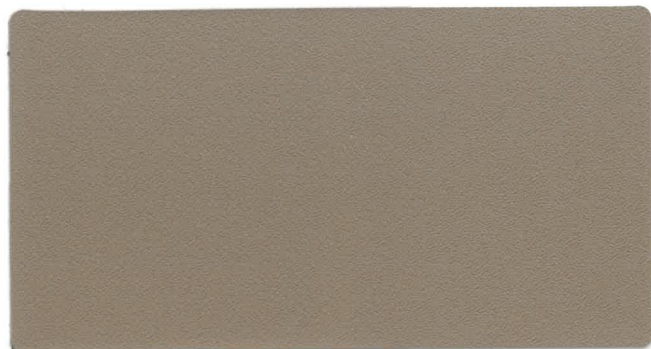
Yachting Protection



Serge Ferrari 

STAMOID LIGHT

Extremely lightweight



Desert

F4128 - 20217



Snow White F4128 - 10309



White F4128 - 03244



Cream F4128 - 10204



Ivory F4128 - 10081



Sand F4128 - 01897



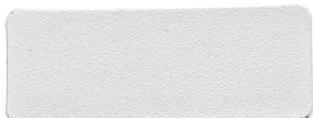
Desert F4128 - 20217



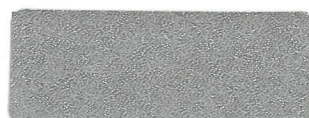
Taupe F4128 - 20165



Bordeaux F4128 - 20042



Pearl grey F4128 - 10001



Silver F4128 - 10124



Cloud grey F4128 - 20218



Charcoal F4128 - 20166



Evergreen F4128 - 20031



Royal Blue F4128 - 04997



Navy F4128 - 10235



Black F4128 - 00002

STAMOID HEAVY COVER

High resistance to tear



Sand

F4313 - 01897



White F4313 - 03244



Sand F4313 - 01897



Pearl grey F4313 - 10001



Cloud grey F4313 - 20218



Navy F4313 - 10235

STAMOID

TOP

Double sided coating ensures a perfect finish



Cloud grey

F3933 – 20218



Sand F3933 – 01897



Desert F3933 – 20217



Snow White F3933 – 10309



White F3933 – 03244



Cream F3933 – 10204



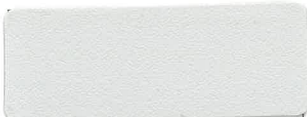
Ivory F3933 – 10081



Taupe F3933 – 20165



Bordeaux F3933 – 20042



Pearl grey F3933 – 10001



Silver F3933 – 10124



Cloud grey F3933 – 20218



Charcoal F3933 – 20166



Evergreen F3933 – 20031



Royal blue F3933 – 04997



Navy F3933 – 10235



Black F3933 – 00002

STAMOID

OPEN

High resistance to tear



Snow white

F4463 – 10309



White F4463 – 03244



Cream F4463 – 10204



Ivory F4463 – 10081

= Width 59 in

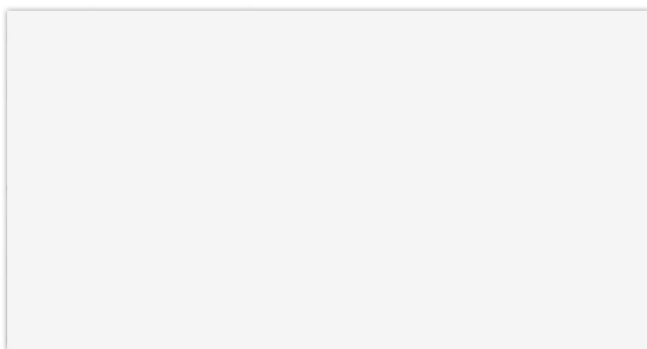
= Width 80 in

= Width 102.4 in

STAMOID

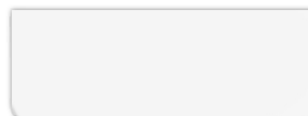
PURE

Extreme resistance in polluted environments



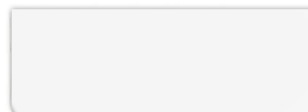
White

↕ F3934 - 03244



Snow White

↕ F3934 - 10309



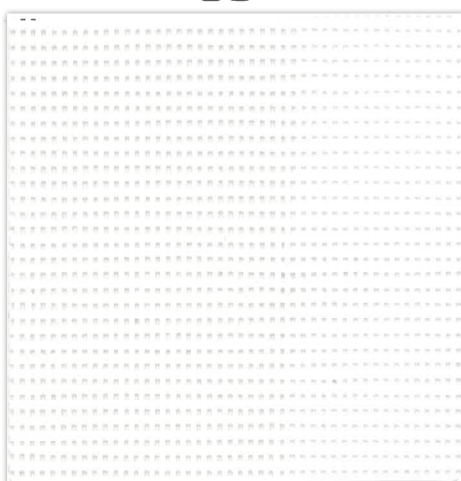
Cream

↕ F3934 - 10204

SOLTIS

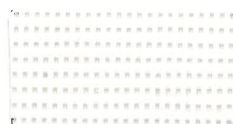
86

14% open solar protection



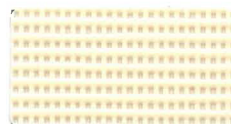
Snow White

↕ 86-50690



White

↕ ↕ 86-2044



Champaign

↕ ↕ 86-2175



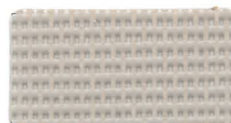
Pepper

↕ ↕ 86-2012



Boulder

↕ ↕ 86-2171



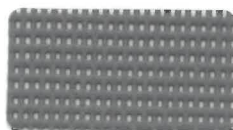
Sandy beige

↕ ↕ 86-2135



Bronze

↕ ↕ 86-2043



Concrete

↕ ↕ 86-2167



Anthracite

↕ ↕ 86-2047



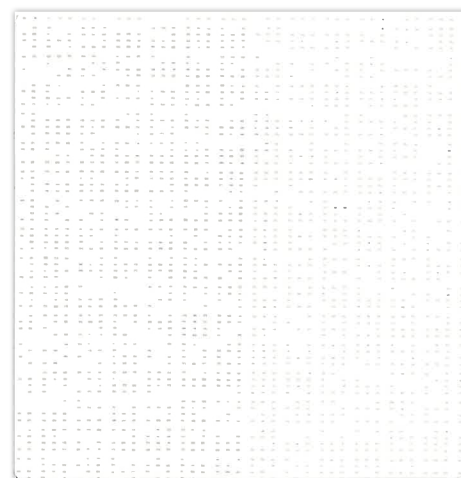
Black

↕ ↕ 86-2053

SOLTIS

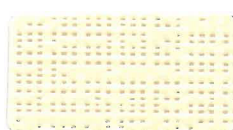
92

4% open solar protection



White

↕ ↕ 92-2044



Champaign

↕ ↕ 92-2175



Pepper

↕ ↕ 92-2012



Boulder

↕ ↕ 92-2171



Sandy beige

↕ ↕ 92-2135



Bronze

↕ ↕ 92-2043



Concrete

↕ ↕ 92-2167



Anthracite

↕ ↕ 92-2047



Black

↕ ↕ 92-2053

↕ = Width 69.7 in

↕ = Width 105.1 in

SELECTION GUIDE

EQUIPMENT PROTECTION



RANGE

APPLICATIONS

STRENGTH CHARACTERISTICS

BENEFITS*

STAMOID LIGHT

- Rigging protection
- Console cover, seat, bar

- Extremely lightweight

- Ease of folding and handling

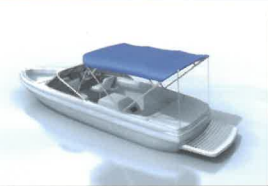
STAMOID HEAVY COVER

- Winter cover
- Flybridge cover
- Large tender covers

- High resistance to tear

- Excellent tensile strength

CREW PROTECTION



STAMOID TOP

- Double sided coating ensures a perfect finish

- Aesthetics and easy upkeep

STAMOID OPEN

- Sprayhood
- Bimini Top
- Cockpit enclosure

- Thicker fibers for additional tear strength

- Lays flat
- Excellent tensile strength

STAMOID PURE

- New formulation "Oil resistant"

- Extreme resistance in polluted environments

SOLAR PROTECTION



SOLTIS 86

- Bimini Top & Dodger
- Sunshade

- Dimensional stability
- Long-term strength
- Exceptional flatness

- 14% open

SOLTIS 92

- 4% open

*Benefits observed for normal product usage

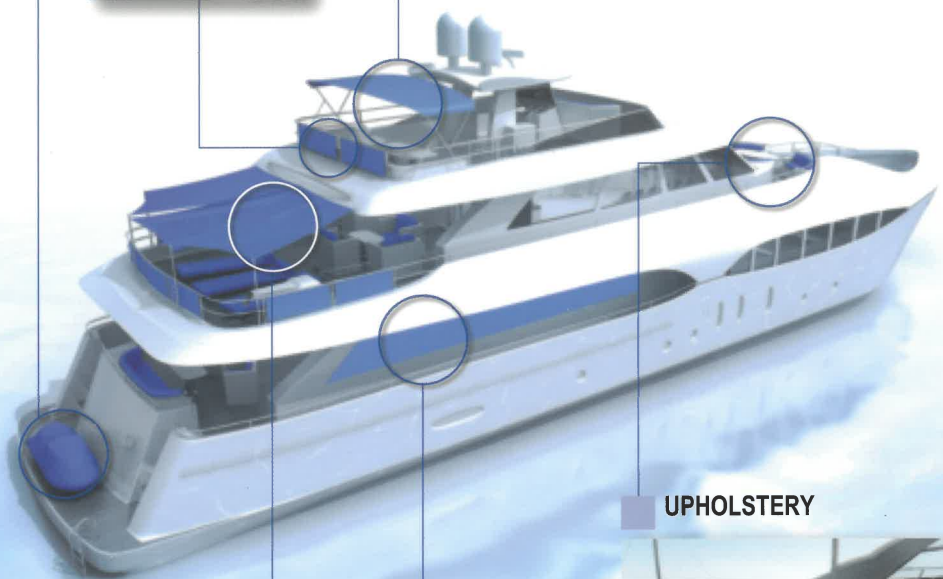
COVER



TOP



WEATHER CURTAIN



UPHOLSTERY



SOLAR PROTECTION




WINDSCREEN PROTECTION



See Serge Ferrari's yachting accessories brochure for more available options in upholstery, trampoline, acoustics & sunshade.

Yachting Protection

Technical properties	STAMOID LIGHT F4128	STAMOID TOP F3933	STAMOID PURE F3934	STAMOID OPEN F4463	STAMOID HEAVY F4313	Standards
Coating	1 side PVC	2 sides PVC	2 sides PVC	2 sides PVC	1 side PVC	
Description	Multi layer composite					
Base cloth	280 dtex PES HT	280 dtex PES HT	280 dtex PES HT	1100 dtex PES HT	1100 dtex PES HT	 TERSUISSE
Weight	8.82 oz/sqyd	12.64 oz/sqyd	12.64 oz/sqyd	19.2 oz/sqyd	13.71 oz/sqyd	EN ISO 2286-2
Width*	59 / 80 / 102 in	59 / 80 / 102 in	59 in	102 in	102 in	
Length of rolls						
59 inch width*	54.68 lyds	54.68 lyds	54.68 lyds	--	--	
80 inch width*	32.81 lyds	32.81 lyds	--	--	--	
102 inch width*	32.81 lyds	32.81 lyds	--	32.81 lyds	32.8 lyds	
Physical properties						
Tensile strength(warp/weft)	224/ 224 lbs/ 2in	269/ 269 lbs/ 2in	269/ 269 lbs/ 2in	517/ 517 lbs/ 2in	517/ 517 lbs/ 2in	EN ISO 1421
Tear strength (warp/weft)	15/ 15 lbs	13/ 15 lbs	13/ 15 lbs	67/ 56 lbs	67/ 56 lbs	DIN 53.363
Further information						
Color light fastness	≥7 (Xenotest 750 hours)					ISO 105-B02
Extreme light stability	ΔE _{lab} <3 (2000 hours)					ISO 4892-3
UV filtration	UPF 50+					NF EN 13758-1+A1
Mold resistance	Degree 0, excellent					EN ISO 846-A
Extreme use temperatures	-4°F / +158°F					
Certifications, labels, guarantees, recycling						



*Not all colors available in all widths

Technical properties	SOLTIS 86	SOLTIS 92	Standards
Openess factor	14%	4%	
Weight	11.2 oz/sqyd	12.4 oz/sqyd	EN ISO 2286-2
Width	69.7 / 105.1 in	69.7 / 105.1 in	Depending on color
Length of rolls			
69.7 in width	54.68 yds	54.68 yds	
105.1 in width	43.74 yds	43.74 yds	
Physical properties			
Tensile strength (warp/weft)	517/360 lbs/2 in	697/ 472 lbs/ 2in	EN ISO 1421
Tear strength (warp/weft)	101/ 45 lbs	101/ 45 lbs	DIN 53.363
Flame retardancy			
Rating	METHOD 1 / NFPA 701 • CSFMT19 • Class A / ASTM E84		
Management Systems			
For Quality	ISO 9001		
Certifications, labels, guarantees, recycling			



The technical data above are average values with a +/- 5% tolerance.

The buyer of our products is fully responsible for their application or their transformation concerning any possible third party. The buyer of our products is responsible for their implementation and installation in compliance with standards, codes of practice and safety regulations in force in destination countries.

To ensure warranty effectiveness, refer to warranty certificate concerned available on demand.

The values quoted above represent results of tests performed in compliance with common design practices and are provided for information only to enable customers to make the best use of our products. Our products are subject to changes prompted by technological developments. We reserve the right to modify their characteristics at any time. The buyer of our products is responsible for checking the validity of the above data.

MAIN FEATURES OF SERGE FERRARI



100% waterproof:
multi layer composite material



Exceptional service life:
very high resistance to UV radiation and mold



Colorfastness:
dope-dyed coating process



Compactness:
remarkable flexibility of composite material



No deformation:
strength of high-tenacity polyester yarn



Easy upkeep:
stain-proof shield, simple cleaning
with soapy water

TESTED UNDER EXTREME CONDITIONS - TARA

Active since 2003, Tara Expeditions is a non-profit organization whose mission it is to research environmental issues related to the ocean and to increase environmental awareness among the general public. Tara is a legendary boat built for extreme conditions and the platform for high-level scientific research missions. Tara and its crew have completed 10 expeditions over the last 10 years, traveling over 16,000 nautical miles across all the world's oceans.

To protect the on-board equipment and ensure the crew's comfort, Serge Ferrari supplied all of Tara's high-performance composite materials: canopies and shade sails, dodgers, protective covers, and cockpit seating and other upholstery. Serge Ferrari's materials have stood up to the demanding environments, from the extreme cold and storms of the arctic, to the brutal sun and heat at the equator.

→ Contact

SERGE FERRARI NORTH AMERICA
1460 SW 6th Court
Pompano Beach, FL. 33069
T: (954) 942-3600
marketing.us@sergeferrari.com

→ TEXYLOOP®

- The Serge Ferrari operational recycling chain
- Secondary raw materials of high intrinsic value compatible with multiple processes
- A quantified response to combat depletion of natural resources

www.texyloop.com

www.sergeferrari.com


Serge Ferrari