



STYLE
4800

WEAVING
EXCELLENCE
WITH
INNOVATION



		SOLAR OPTICAL PROPERTIES				SHGC/G VALUE g-tot (glass & blind)	
Code	Color	TS	RS	AS	TV	SINGLE 1/4 CL	INSULATING 1 HA
STYLE 4800 - 1%							
P06	Chalk	8	77	15	6	0.19	0.18
P07	Alabaster	10	62	28	4	0.30	0.23
P75	Pearl	4	67	29	3	0.26	0.21
Q97	Sand	1	51	48	1	0.35	0.25
Q98	Mocha	0	12	88	1	0.56	0.35
Q99	Taupe	1	41	58	0	0.40	0.28
V10	Ebony	0	3	97	0	0.60	0.37
V16	Grey	4	51	45	2	0.35	0.25
V59	Fleece	0	24	76	1	0.49	0.32
V60	Clay	0	32	68	0	0.44	0.30
V61	Mink	0	7	93	0	0.58	0.37
V62	Flint	0	8	92	0	0.57	0.36



PROTECTION THAT LIVES ON MICROBAN®

Microban® antimicrobial protection inhibits the growth of stain-causing bacteria, mold and mildew on the shade.



PRODUCT CERTIFIED FOR
LOW CHEMICAL EMISSIONS
UL.COM/GG
UL 2818



MIF Seal of Approval



TS = Solar Transmittance
RS = Solar Reflectance
AS = Solar Absorptance
TV = Visual Transmittance

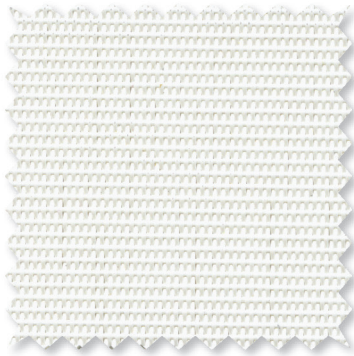
SHGC = Solar Heat Gain Coefficient

1/4 CL = 1/4" Clear Glass
1 HA = 1" Heat Absorbing Glass

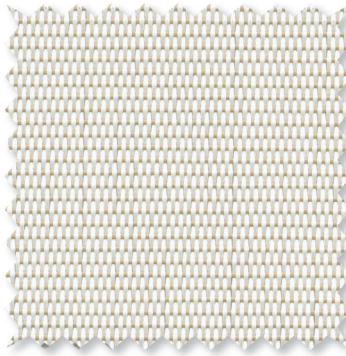
Fabrics Installed Internally
Zero-Degree Profile Angle

For additional performance values, test references and technical definitions visit us at www.phifer.com.

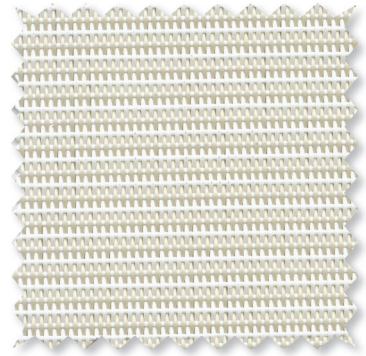
P06 Chalk



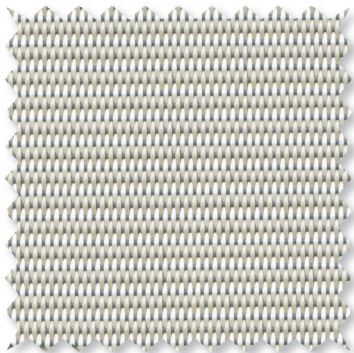
P75 Pearl



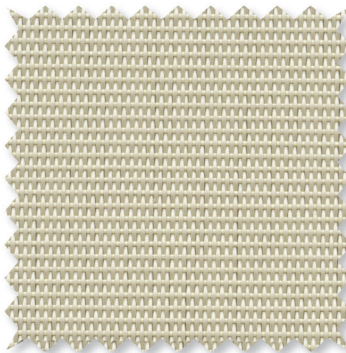
P07 Alabaster



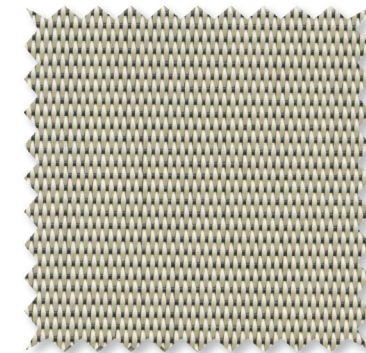
V16 Grey



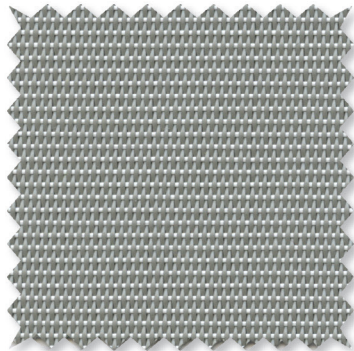
Q97 Sand



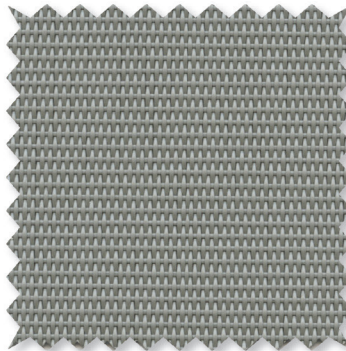
Q99 Taupe



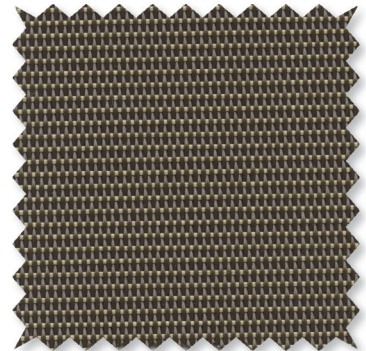
V60 Clay



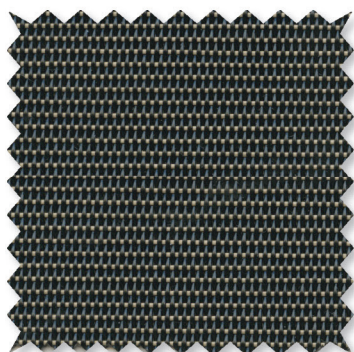
V59 Fleece



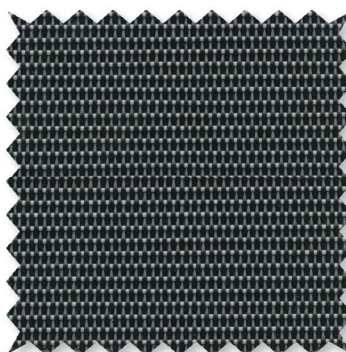
Q98 Mocha



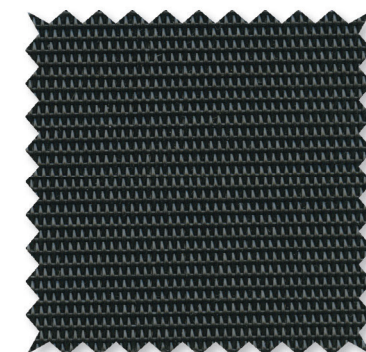
V61 Mink



V62 Flint



V10 Ebony



*Colors may vary based on individual computer settings and should only be used for general reference.

STYLE 4800 SPECIFICATIONS

Designed with privacy in mind, Style 4800 is woven in a dense plain weave to limit directional visibility while allowing natural light to enter the room. Woven from vinyl-coated polyester yarns Style 4800 is durable, easy to maintain and high performing with a robust construction that makes it ideal for heavy traffic areas and public spaces. Style 4800 can also be used in exterior shading systems.

FIRE CLASSIFICATION	California U.S. Title 19 (small scale) NFPA 101 (Class A Rating) BS 5867 Part 2 Type B Performance CAN/ULC-S 109-03 (large and small scale)	NFPA 701 TM#1 (small scale) IBC Section 803.1.1 (Class A Rating) NFPA 701 TM#2 (large scale) CAN/CGSB2-4.162-M80
BACTERIA AND FUNGAL RESISTANCE	ASTM E 2180 ASTM G21 ASTM D 3273 GREENGUARD Mold and Bacteria Standard ASTM 6329 includes Microban antimicrobial additives	AATCC30 Part 3
ENVIRONMENTAL CERTIFICATION	GREENGUARD GREENGUARD Gold Certified to these standards for low chemical emissions into indoor air during product usage	
LEAD FREE	RoHS/Directive 2002/95/EC ANSI/WCMA A 100.1-2007 for lead content US Consumer Product Safety Commission Section 101	REACH (EC 1907/2006) compliant
WARRANTY	10-year interior 5-year exterior	
ACOUSTICAL PERFORMANCE	NRC (Noise Reduction Coefficient) and SAA (Sound Absorption Average) tested in accordance with ASTM C423-09a	
UV PROTECTION	Seal of Approval by the Melanoma International Foundation (MIF) for effectiveness in preventing sun damage to the skin or eyes	

STYLE 4800

WIDTHS	63", 98" and 126" 160 cm, 248.9 cm and 320 cm
ROLL LENGTH	30 Linear Yards 27.4 m
COMPOSITION	24% Polyester 76% Vinyl on Polyester
MESH WEIGHT	18.5 oz/yd ² 627 g/m ²
FABRIC THICKNESS	0.036 in 0.91 mm
OPENNESS FACTOR	Approximately 1%
UV BLOCKAGE	Approximately 99%
ACOUSTICAL VALUE	NRC .30 / SAA .31

PHIFER
INCORPORATED

P. O. Box 1700 • Tuscaloosa, Alabama 35403-1700 USA
Phone: 205.345.2120 • FAX: 205.391.0799
Toll Free USA/Canada: 1.800.221.5497
phifer.com • ISO Registered



® SheerWeave is a registered trademark of PHIFER INCORPORATED.
© MICROBAN is a registered trademark of Microban Products Company.
™ UL, the UL logos and the UL mark are trademarks of UL LLC.
Photo courtesy of Draper INC., Spiceland, Indiana, USA.
© PHIFER INCORPORATED V18 3033839