



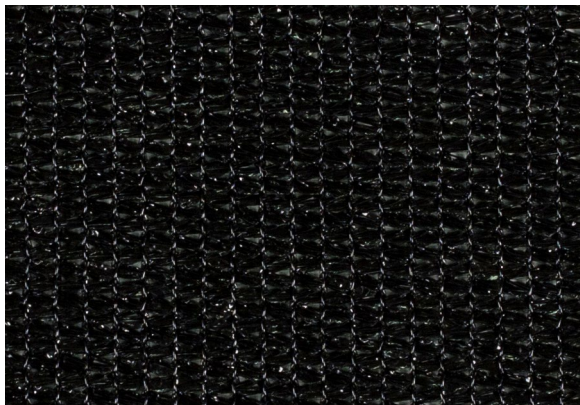
Roll Width: 118 inches • Weight: 9.5oz/yd²

SolaMesh fabric is an industry-leading performance fabric for shade sails and tension shade structures, expanding the accessibility of many outdoor spaces despite the season. This innovative fabric is engineered with polymer technology and made from HDPE monofilament and tape yarns to provide optimal strength, durability, and protection from UV rays.

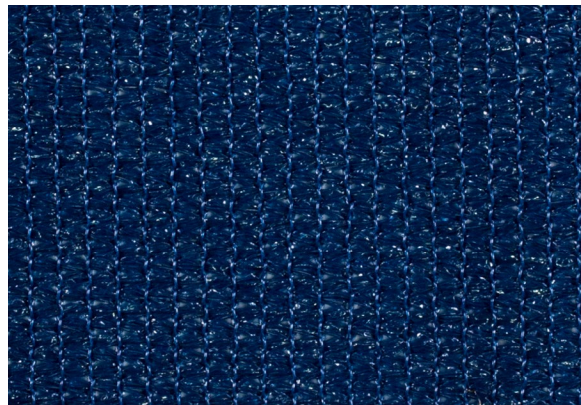
This versatile, worry-free product has passed NPFA 701-2023 Test Method 2 and ASTM E84 Class B and is backed by a 10-year warranty.



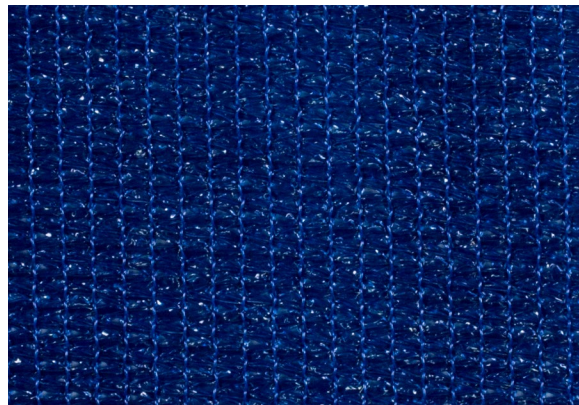
**865084**  
GRAPHITE



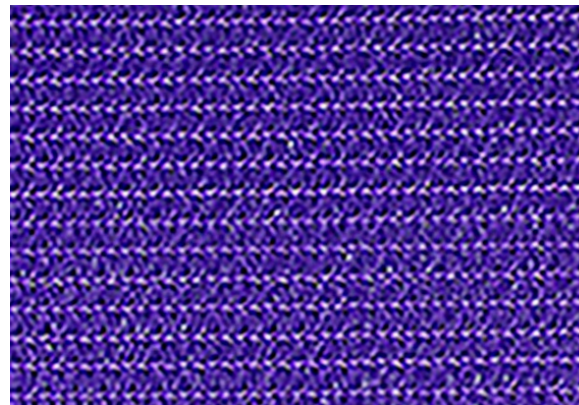
**865071**  
JET BLACK



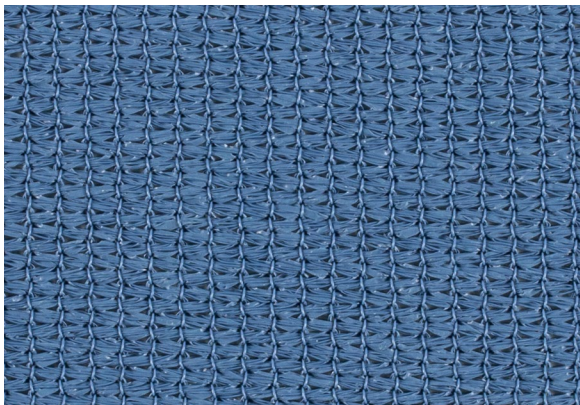
**865086**  
DENIM



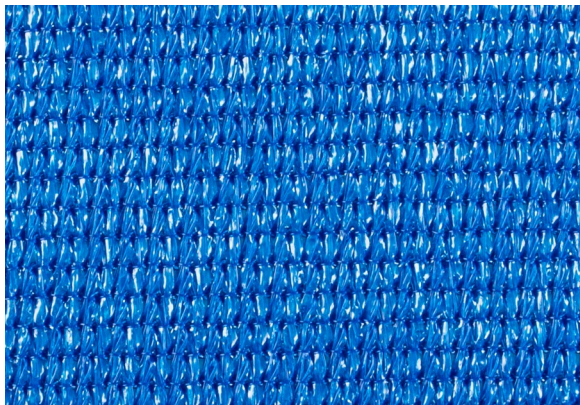
**865070**  
ROYAL BLUE



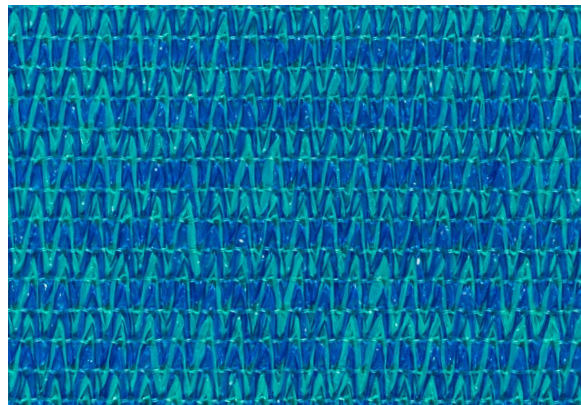
**865089**  
GRAPE



**865078**  
VENETIAN BLUE



**865085**  
OCEAN BLUE



**865080**  
LAGOON



**865072**  
FOREST GREEN



**865077**  
CACTUS



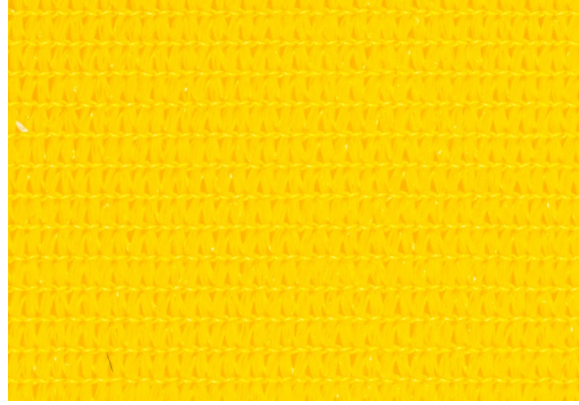
**865079**  
SMOKE GREY



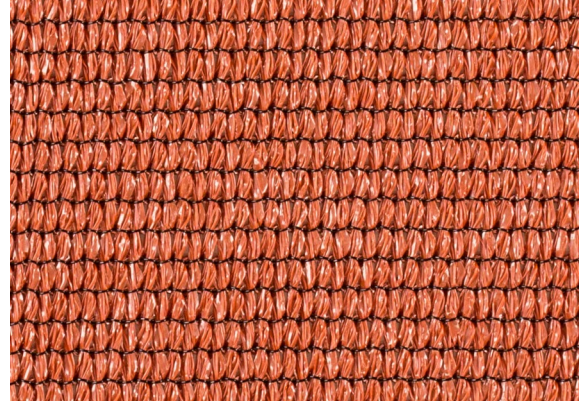
**865075**  
CREAM



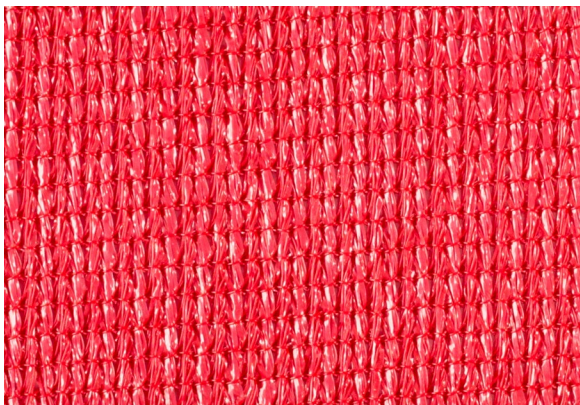
**865074**  
SAND



**865081**  
CANARY YELLOW



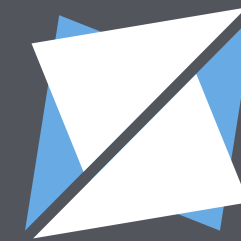
**865082**  
BRICK



**865073**  
CRIMSON

Colors are representative only. Small variations in shade should be anticipated and are within commercial tolerances.





# SOLAMESH®

SHADE SAIL FABRIC AND HARDWARE

From fabric to hardware, Trivantage® is the one-stop shop for all shade sail needs. SolaMesh hardware is engineered to work seamlessly with SolaMesh fabric.

SolaMesh hardware is made of 316 stainless steel, available in a variety of sizes to meet all demands, and is backed by a 5-year warranty.

**316**  
STAINLESS  
STEEL

**5**  
YEAR  
LIMITED WARRANTY

**TRIVANTAGE**  
ORDER. DONE. GOOD CALL.



**Need help?**

Your customer care team is just a call or click away.

**800.786.1876 | [trivantage.com](https://trivantage.com)**