

# Dimmable LED RTS Light Kit

Part # 1811491 or #1811506



## OVERVIEW:

The **Dimmable LED RTS Light Kit** is an accessory used to add exterior lighting to motorized awnings featuring **Radio Technology Somfy® (RTS)**. This lighting option allows for 12 levels of brightness and also features the Somfy “MY” my position to set a preferred lighting level. Available as a turn key kit including a receiver and 4 LED light bars (warm or cool white) or customizable to suit any lighting needs. This plug and play kit installs easily without the need for an electrician and is ideal for existing or new installations. Since it features RTS, it is compatible with all RTS motors, associated controls and accessories.

## FEATURES SUMMARY:

- Completely plug and play, no electrician required
- 12 levels of brightness
- “MY” position
- Up to 60W of 12V DC LED lighting (daisy chain 6 LED strips)
- Compatible with full range of RTS hand-held remotes, wall switches and Somfy myLink™ app
- Ideal for new and existing installations



## WHAT'S IN THE BOX:

### Warm White Kit Part # 1811491

- 1 x Dimming LED RTS receiver
- 1 x 5 ft. control to LED cable
- 1 x 25 ft. control to LED cable
- 4 x LED bar 12V DC Warm White with adhesive tape
- Instructions

### Cool White Kit Part # 1811506

- 1 x Dimming LED RTS receiver
- 1 x 5 ft. control to LED cable
- 1 x 25 ft. control to LED cable
- 4 x LED bar 12V DC Cool White with adhesive tape
- Instructions

\*Kit parts are also available separately (see Accessories & Parts À la carte)

## TECHNICAL SPECIFICATIONS:

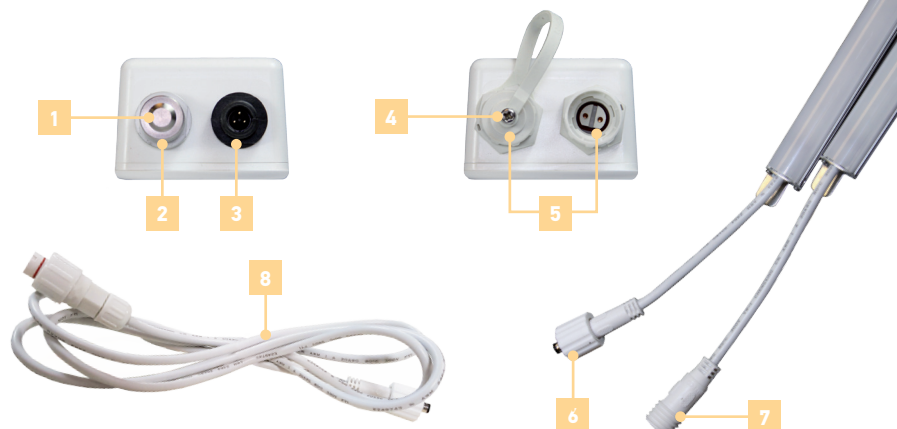
- Receiver Specifications:
  - Power In: 120-230VAC 50-60Hz
  - Power Out: 12V DC 60W Max. (up to 6 Somfy LED bars)
  - Material: Polycarbonate
  - Dimensions control: 12.39" x 2.30" x 1.63"
  - Maximum Range: 65 ft. under optimal conditions
  - Temperature Range:
    - Storage: -4F to 140 F (-20°C to +60°C)
    - Operational: -4F to 104 F (-20°C to +40°C)
  - Frequency: 433.42Mhz
- LED bars specifications:
  - LED bar dimensions: 3.3Ft x 0.75"
  - LEDs per bar: 120
  - LED bar power: 9.6W @ 12V DC
  - LED colors: WW = 3500k, CW = 6500k
- Shipping Weight: 7lb
- IP Rating: 67 outdoor rated
- Approvals: UL class 2 power supply

## ACCESSORIES & PARTS À LA CARTE:

- Dimming LED RTS receiver # 1811486
- LED bar 12V DC Warm White # 9019958
- LED bar 12V DC Cool White # 9019959
- Connections from the receiver (# 1811486) to first LED bar or to LED extension cable (# 9019977):
  - 0.5 ft. control to LED cable # 9019955
  - 5 ft. control to LED cable # 9019956
  - 15 ft. control to LED cable # 9019957
  - 25 ft. control to LED cable # 9019976
- Extension between LED bars (more than 1 LED extension cable can be added in series):
  - 5 ft. LED extension cable # 9019977
- Female connection, providing 2 Male outputs to connect to LED bars or the LED extension cable:
  - LED splitter #9020276
- Field installable motor plug # 9018886
- 2 pole white plug with screws for 12V DC LEDs # 9019954
- Sunea power cord:
  - 11 ft. # 9015783
  - 17 ft. # 9015977
  - 23 ft. # 9015784

## CONNECTIONS:

ELEMENT	FUNCTION
1 Weather Cap	Protects the motor plug
2 Motor Plug	Input for the motor
3 Power Plug	Input for the power
4 Weather Cap	Protects the additional LED output
5 LED Output	Output for LED bars
6 Male Connector	Connects LED bar to next LED bar or LED extension cable
7 Female Connector	Connects LED bars and receiver (via interconnect cable)
8 Interconnect Cable	Connects the receiver to LED bars



DIMENSIONS:



BEST WIRING PRACTICES

The diagram shown below is meant for illustrative purposes to show the connections from product to product. This device could be used in other configurations than shown below.

Example 1: Utilizing the Sunea® motor the receiver is plugged into the motor and both are powered from the same source via Sunea® power cord. The field installable motor plug allows the same configuration with other motors.

Example 2: The receiver and motor are plugged separately for power, each directly into the power outlet.  
NOTE: The receiver can be used with any LED lights, up to 60w.

