

# SOLAR FABRICS

NORTH AMERICAN  
COLLECTION







# Dickson : a history of expertise

Building on more than 200 years of expertise, Dickson® is an established player on the woven fabric market.

Thanks to the know-how of its employees, Dickson continues to be the benchmark for technical textiles. Having made innovation a keystone of its philosophy, it always adapts to the latest market trends.

Dickson is recognized the world over for the quality of its canvases, which are composed of millions of interwoven and intertwined threads.

# ESSENTIAL

“

*111 colours to express your creativity. Available in 111 hues, from trendy solids to more contemporary stripes, Dickson offers the widest range on the market.*

*Divided into six colour groups, our wide fabric selection allows you to match or fully contrast exteriors with interior décors.*

*A range of colours for even the boldest of designs. ”*



Naples Dark Grey - D308





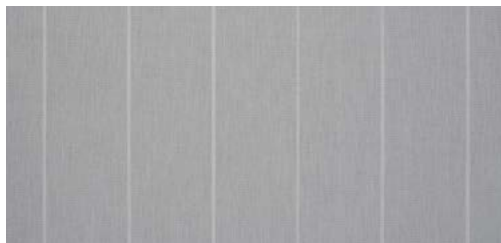




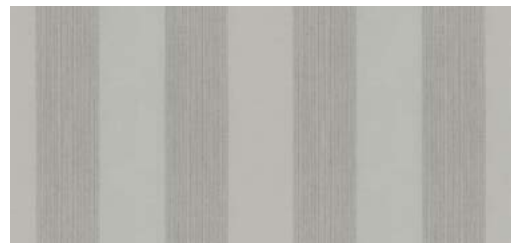
Slate - ORC 8203 120



**Chalk Tweed**  
U389



**Naples Light Grey**  
D304



**Pencil Grey**  
D320



**Pearl**  
7972



**Lead Chiné**  
8396



**Paris Cadet Grey/ Natural**  
8907



**Stone**  
6196



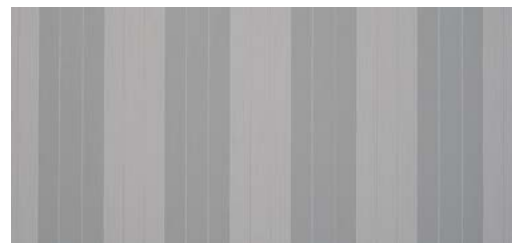
**Marble**  
U409



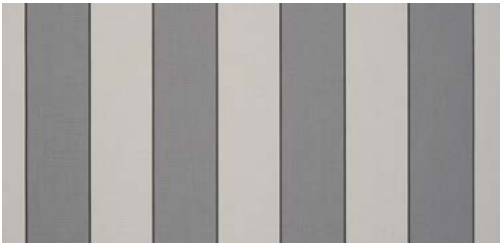
**Grey Tweed**  
U190



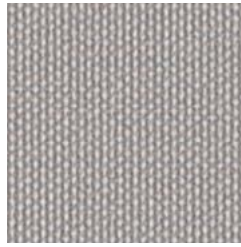
**Pewter**  
7552



**Craft Grey**  
D328



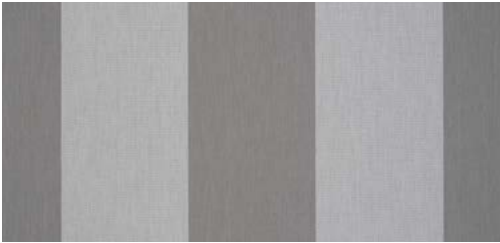
**Sienna Dark Grey**  
8931



**Titanium**  
U408



**Manosque Grey**  
D309



**Wide Chiné Grey**  
D298



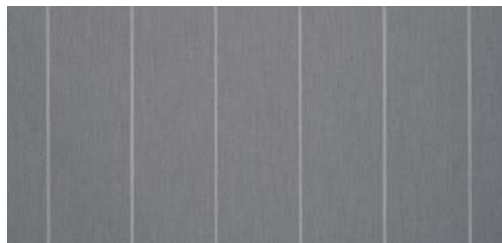
**Platinum**  
U407



*The refined greys in this collection enjoy textured and mottled effects - the result of subtle combinations intensified by the transparent aspect of the materials.*



**Pencil Dark Grey**  
D319



**Naples Grey**  
D113



**Grey**  
6088



**Slate**  
8203



**Naples Dark Grey**  
D308



**Manosque Dark Grey**  
D108



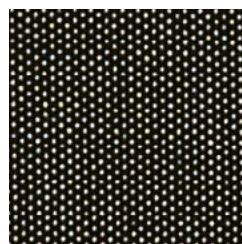
**Charcoal Tweed**  
7330



**Carbone**  
U171



**Flanelle**  
U104



**Pepper**  
U343



**Basalt Chiné**  
U095



**Color Block Black**  
D330



**Steel**  
U406



**Macadam Tweed**  
U373



**Black**  
6028





Heather Chiné - 8779



**White**  
0001



**Natural**  
7133



**Raw**  
6020



**Beige Tweed**  
U189



**Linen**  
8904



**Naples Linen**  
D307



**Clay**  
U387



**Hardlot Beige**  
8935



**Papyrus Tweed**  
U370



**Pencil Beige**  
D324



**Taupe**  
7559

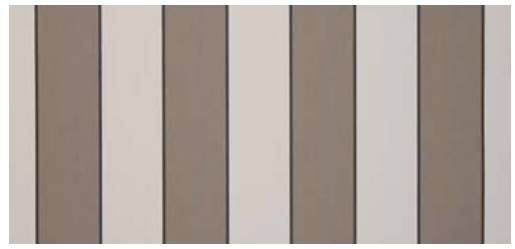


**Mink Tweed**  
U137





**Thatch**  
U235



**Sienne Beige**  
D100



**Gypsum**  
U335



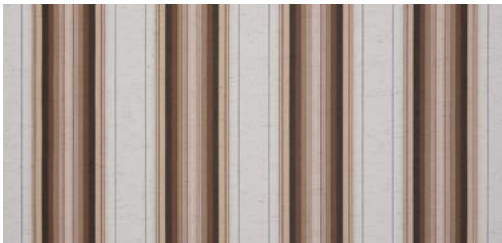
**Wide Chiné Beige**  
D301



**Dune**  
O681



**Suede**  
U337



**Jackson**  
6276



**Mocha**  
U410



**Gazelle Tweed**  
U140



**Beige**  
8902



**Rome Brown**  
D315



**Naples Heather**  
D305



**Heather Chiné**  
8779



**Brownie**  
U224



**Naples Hemp**  
D306



**Manosque Beige**  
D103



**Color Block Brown**  
D334



*Resolutely timeless, natural tones have shifted towards taupe hues. Browns have been reworked with a sophisticated eye to produce designs such as Color Block Brown where regular hints of beige bring the surface to life. ”*

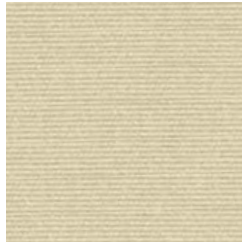


Maize - U415

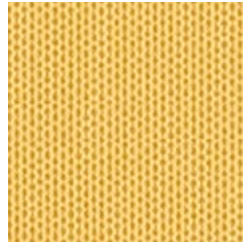




**Alabaster Tweed**  
U136



**Raw Tweed**  
7548



**Maize**  
U415



**Harlot Yellow**  
8612



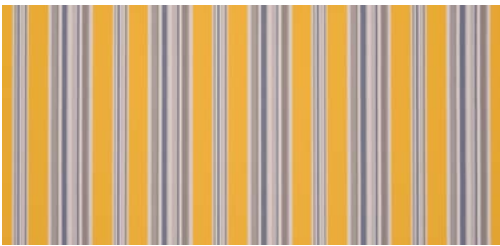
**Manosque Yellow**  
D107



**Wide Chiné Yellow**  
D300



**Honey**  
U414



**Windsor Yellow**  
6292



**Yellow**  
6316



**Paris Lemon Yellow / Natural**  
8553



**Gold**  
U105

“

*Sunny colours create a warm  
ambiance under the awning  
for unrivalled luminosity.”*



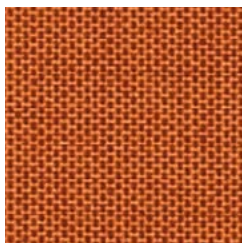
**Color Block Yellow**  
D333



**Color Block Orange**  
D332



**Orange**  
0018



**Pumpkin**  
U413



RED  
& PINK

Red - 0020 / Slate - 8203

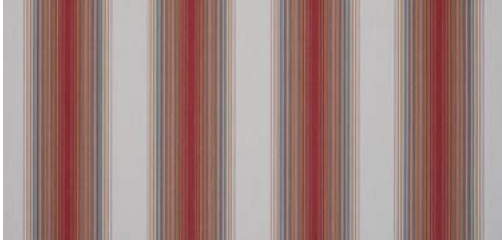




**Paris Red**  
3914



**Windsor Red**  
6272



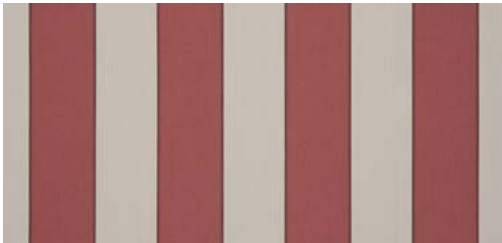
**Oslo Red**  
7351



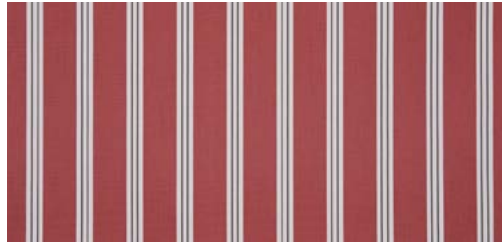
**Cassis**  
7554



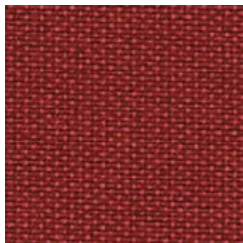
**Davos Red**  
6173



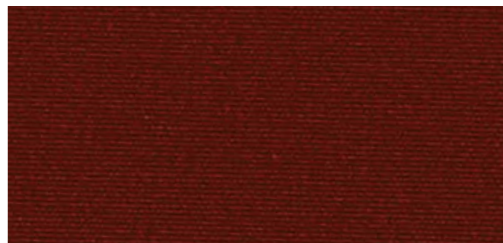
**Sienne Red**  
8211



**Pompadour**  
7124



**Carmine**  
U411



**Burgundy**  
8206



**Craft Red**  
D329



**Paris Rouge Red / Natural**  
8557



**Red**  
0020



**Color Block Red**  
D335



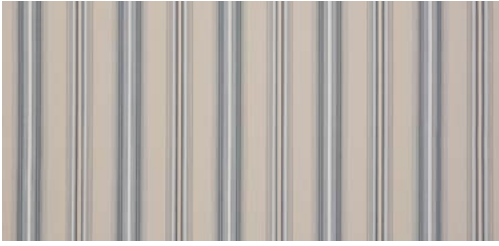
*Any shade of red is suitable for façades when paired with colours that softens its impact, such as white, grey or another neutral shade. Red also works well with warm tones like orange. ”*



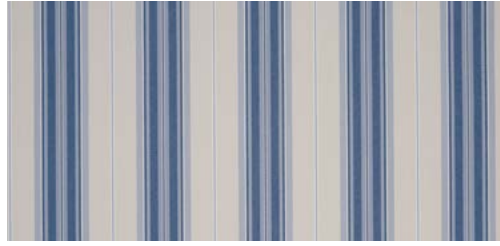
BLUE

Azure - U388

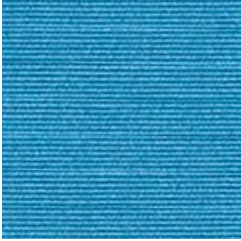




**Hossegor Blue**  
6228



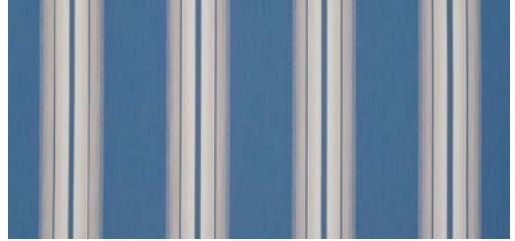
**Rome Blue**  
D339



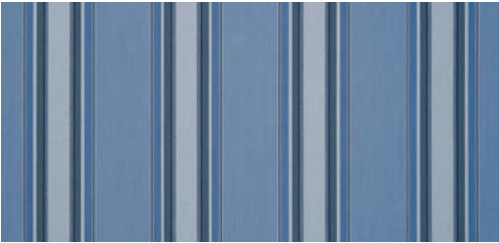
**Azure**  
U388



**Pencil Blue**  
D321



**Venezia Blue**  
7130



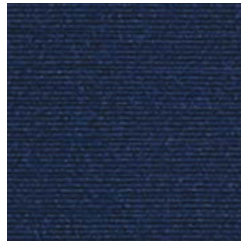
**Casablanca**  
7466



**Royal Blue**  
0017



**Craft Blue**  
D327



**Navy Blue**  
6022

“

*Blue is easy to match. It goes with practically any colour, light or dark.”*



**Paris Navy / Natural**  
8556



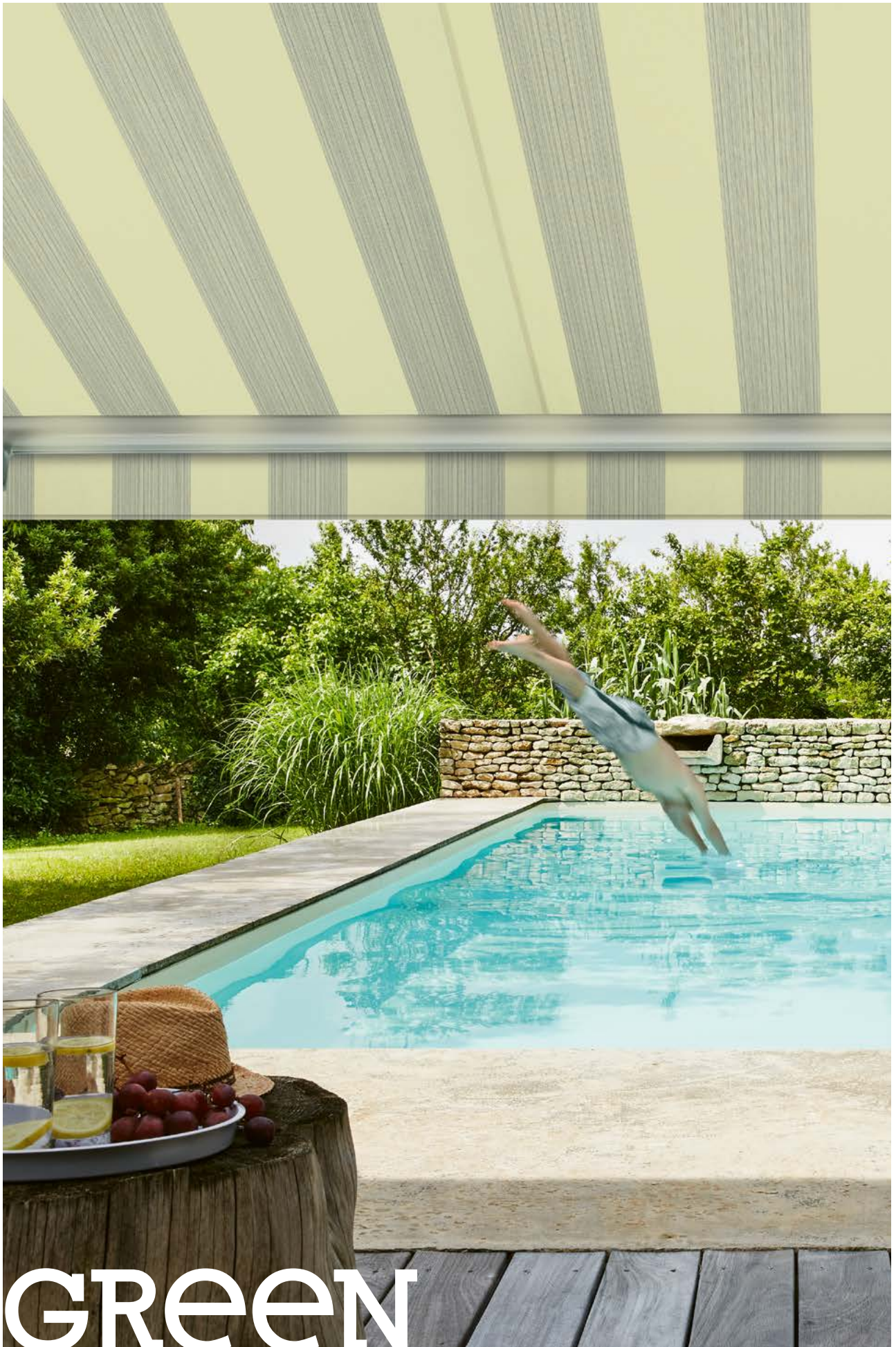
**Ocean Blue**  
7264



**Color Block Blue**  
D331

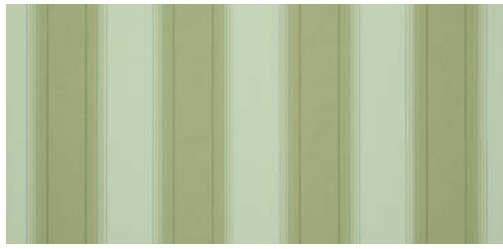


**Deep Navy**  
8238



Pencil Green - D322





**Boston Lime**  
8630



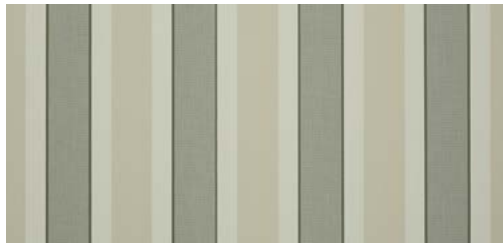
**Amande**  
7244



**Fern**  
U321



**Pencil Green**  
D322



**Hardenot Green**  
8614



**Olive**  
0853



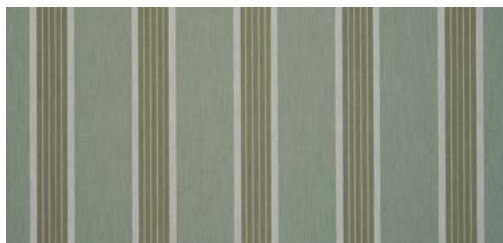
*Green is a soothing colour that procures a sense of peace and serenity. It adds a note of freshness and well-being to any terrace."*



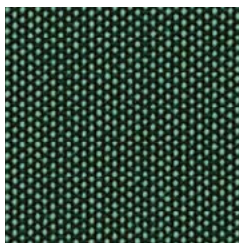
**Forest Green**  
6687



**Baden Green**  
6275



**Manosque Green**  
D104



**Larch**  
U417

# JACQUARDS

“

*The jacquard fabrics provide an insight into the skill and expertise offered by Dickson: its in-house design team monitors the latest trends to create these graphic fabrics in pastel and powdered hues.*

*Its Brush and Constellation fabrics reflect nearly 200 years of yarn and weaving proficiency.*

*Much more than patterns, they bear witness both to its manual and machine work, and weaving effects developed especially to appeal to our senses.”*











**Constellation Grey**  
J178



**Pebble Grey**  
J062

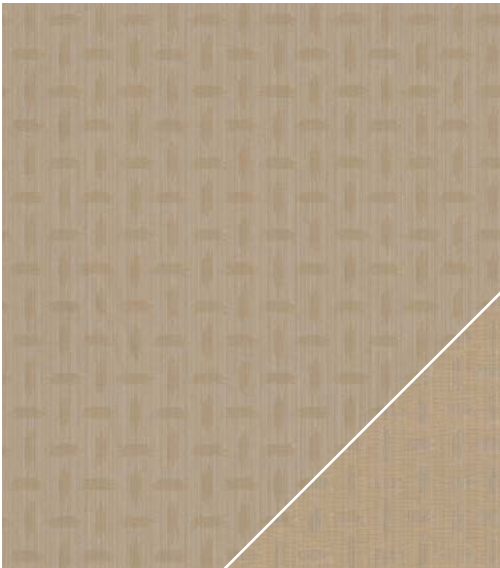


**Brush Grey**  
J171



**Brush Carbon**  
J172





**Brush Beige**  
J169



**Constellation Curry**  
J177



**Constellation Blue**  
J180

## Tip

Up or down ?

Because our Jacquard designs are based on a double interplay of colours, your fabric takes on a different aspect depending on whether you are above or below it.



**Brush Hemp**  
J170



**Constellation Beige**  
J179







# Dickson quality Guarantee

## Colours that last

The solution-dyed yarn used to produce our fabrics offers long-lasting resistance to UV rays and weather conditions. Even when exposed to strong sunlight, they retain their dazzling colours... for a very long time.

## 10-year fabric warranty

Its high-performance fibres, treatments and weaving processes allow Dickson to guarantee some of its fabrics for up to 10 years.

## French made

Building on its unique expertise, Dickson produces all of its fabrics in Wasquehal in northern France (59).

## Visual and thermal comfort

Dickson® fabric reduces glare and heat by up to 95% to eliminate the greenhouse effect, keep your interiors feeling fresh and, depending on the colour, block 90% to 100% of UV rays.

## Easy to maintain

CLEANGARD® water- and dirt-resistant finish ensures each of our fabrics is highly resistant to stains, grease and water.

Low maintenance guaranteed!

## Textiles that protect people and the planet

Awarded the OEKO-TEX label (class II, products in direct contact with the skin), Dickson fabrics are produced without hazardous substances and do not pose a threat to health, the skin or the environment.



**UV resistant**  
4-5/5 - ISO 105 B04



**Water and stain  
resistant\***



**Protects against UV rays  
and heat**



**Tear resistant**



**Mould resistant**



**Easy to maintain**



**DICKSON**<sup>®</sup>  
innovative textiles for your world

[www.dickson-constant.com](http://www.dickson-constant.com)

**TRIVANTAGE**  
ORDER. DONE. GOOD CALL.



**TRICAN**  
CORPORATION

\* Each range's specifications vary according to the product. Learn more at [www.dickson-constant.com](http://www.dickson-constant.com)

Edition August 2019 – SAS DICKSON CONSTANT - capital 12.640.000 euros - 381 347 970 R.C.S. Lille Métropole  
Photos : Landry Laurie, Remi Dargegen - photos are not contractual - Trivantage<sup>®</sup> is a trademark of Glen Raven, Inc. - Dickson  
Constant is a Glen Raven company