



STYLE
1000

WEAVING
EXCELLENCE
WITH
INNOVATION



Code	Color	SOLAR OPTICAL PROPERTIES				SHGC/G VALUE g-tot (glass & blind)	
		TS	RS	AS	TV	SINGLE	
		1/4 CL	1/4 HA				
STYLE 1000 - 25%							
P02	White	36	50	14	31	0.42	0.35
P03	Antique White	37	47	16	32	0.44	0.36



PROTECTION THAT LIVES ON 
MICROBAN[®]

Microban[®] antimicrobial protection inhibits the growth of stain-causing bacteria, mold and mildew on the shade.



PRODUCT CERTIFIED FOR
 LOW CHEMICAL EMISSIONS
 UL.COM/GG
 UL 2818



TS = Solar Transmittance
 RS = Solar Reflectance
 AS = Solar Absorptance
 TV = Visual Transmittance

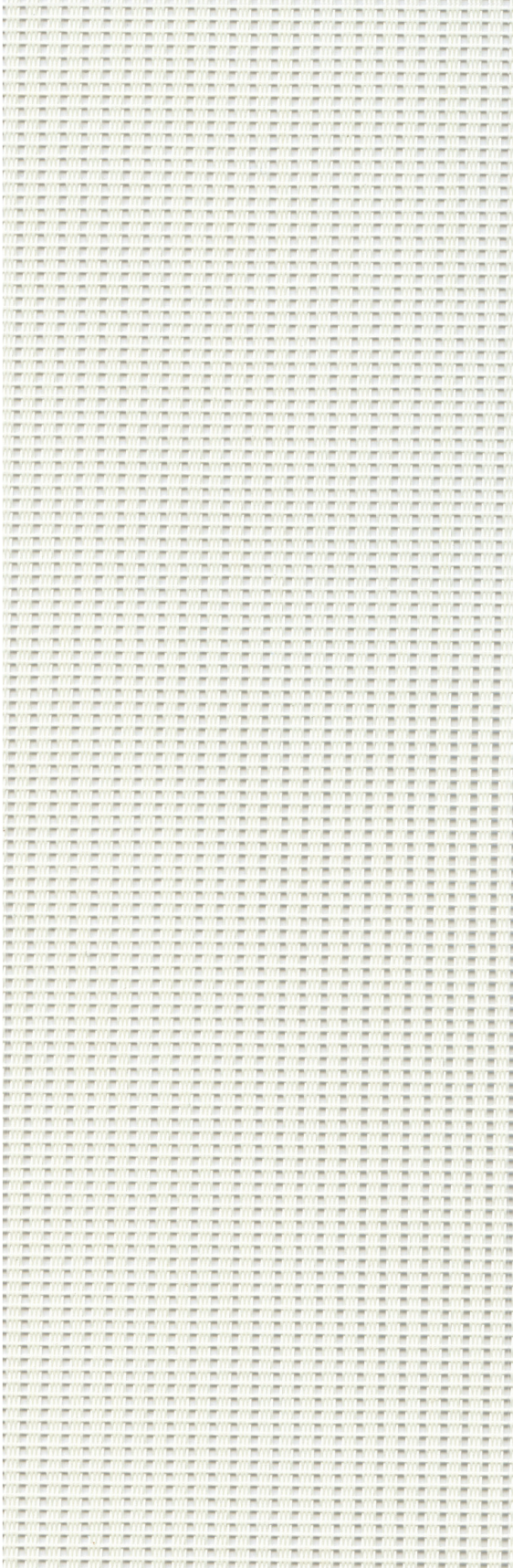
SHGC = Solar Heat Gain Coefficient

1/4 CL = 1/4" Clear Glass
 1/4 HA = 1/4" Heat Absorbing Glass

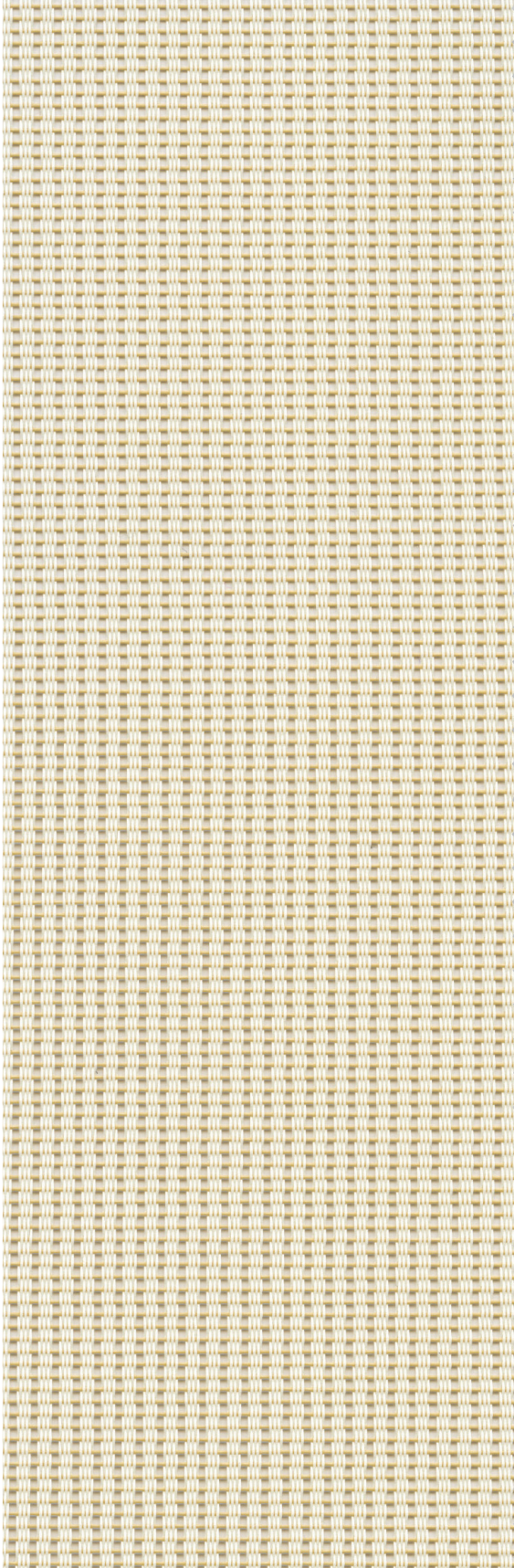
Fabrics Installed Internally
 Zero-Degree Profile Angle

For additional performance values, test references and technical definitions visit us at www.phifer.com.

P02 White



P03 Antique White



*Colors may vary based on individual computer settings and should only be used for general reference.

STYLE 1000 SPECIFICATIONS

This vinyl coated fiberglass ribbed-weave fabric offers substantial shading and excellent outward visibility with improved day-time privacy. Style 1000 can also be used in exterior shading systems.

FIRE CLASSIFICATION	California U.S. Title 19 (small scale) NFPA 101 (Class A Rating) BS 5867 Part 2 Type B Performance CAN/ULC-S 109-03 (large and small scale)	NFPA 701 TM#1 (small scale) IBC Section 803.1.1 (Class A Rating) NFPA 701 TM#2 (large scale)
BACTERIA AND FUNGAL RESISTANCE	ASTM E 2180 ASTM G21 ASTM D 3273 GREENGUARD Mold and Bacteria Standard ASTM 6329 includes Microban antimicrobial additives	AATCC30 Part 3
ENVIRONMENTAL CERTIFICATION	GREENGUARD GREENGUARD Gold Certified to these standards for low chemical emissions into indoor air during product usage	
LEAD FREE	RoHS/Directive 2002/95/EC ANSI/WCMA A 100.1-2007 for lead content US Consumer Product Safety Commission Section 101	REACH (EC 1907/2006) compliant
WARRANTY	10-year interior 5-year exterior	
TRACKLESS	TrackLess Technology minimizes the fiberglass yarns' inherent tendencies to track when being rolled up in a shade. With TrackLess Technology these same fabrics now track less, roll up straighter and reduce shade fabrication time.	

STYLE 1000

WIDTHS	36", 48", 72", 84" and 96" 91.4 cm, 121.9 cm, 182.9 cm, 213.4 cm and 243.8 cm
ROLL LENGTH	30 Linear Yards 27.4 m
COMPOSITION	35% Fiberglass 65% Vinyl on Fiberglass
MESH WEIGHT	8.8 oz/yd ² 298 g/m ²
FABRIC THICKNESS	0.020 in 0.51 mm
OPENNESS FACTOR	Approximately 25%
UV BLOCKAGE	Approximately 75%

PHIFER
INCORPORATED

P. O. Box 1700 • Tuscaloosa, Alabama 35403 -1700 USA
Phone: 205.345.2120 • FAX: 205.391.0799
Toll Free USA/Canada: 1.800.221.5497
phifer.com • ISO Registered



© SheerWeave is a registered trademark of PHIFER INCORPORATED.
© MICROBAN is a registered trademark of Microban Products Company.
™ UL, the UL logos and the UL mark are trademarks of UL LLC.
Photo courtesy of UNIFLEX WINDOW FASHIONS, Sao Paulo, Brazil.
© PHIFER INCORPORATED V17 3033830