



STYLE
2500 / 2410 / 2390 / 2360

WEAVING
EXCELLENCE
WITH
INNOVATION



Code	Color	SOLAR OPTICAL PROPERTIES				SHGC/G VALUE	
		TS	RS	AS	TV	SINGLE 1/4 CL	INSULATING 1 HA
STYLE 2500 - 1%							
P12	Oyster	15	68	17	13	0.28	0.22
P13	Oyster/Beige	10	60	30	9	0.31	0.23
P14	Oyster/Pearl Gray	7	50	43	6	0.37	0.25
Q20	Beige	7	50	43	6	0.37	0.25
Q21	Beige/Pearl Gray	5	42	53	5	0.40	0.28
V20	Pearl Gray	3	32	65	3	0.45	0.30
V21	Charcoal	1	4	95	1	0.60	0.37
V22	Charcoal/Gray	2	8	90	3	0.58	0.36
V24	Charcoal/Chestnut	1	6	93	1	0.59	0.37
V32	Charcoal/Alpaca	1	16	83	2	0.54	0.34
STYLE 2410 - 3%							
P12	Oyster	17	64	19	12	0.30	0.23
P13	Oyster/Beige	11	55	34	8	0.34	0.24
P14	Oyster/Pearl Gray	9	44	47	7	0.40	0.27
Q20	Beige	10	48	42	7	0.38	0.26
Q21	Beige/Pearl Gray	7	39	54	5	0.43	0.29
V20	Pearl Gray	6	31	63	5	0.46	0.30
V21	Charcoal	3	3	94	3	0.61	0.37
V22	Charcoal/Gray	3	9	88	3	0.57	0.36
V24	Charcoal/Chestnut	3	6	91	3	0.59	0.37
V32	Charcoal/Alpaca	4	20	76	5	0.52	0.33
STYLE 2390 - 5%							
P12	Oyster	21	61	18	14	0.33	0.23
P13	Oyster/Beige	17	54	29	12	0.36	0.25
P14	Oyster/Pearl Gray	14	45	41	10	0.40	0.28
Q20	Beige	14	47	39	10	0.39	0.27
Q21	Beige/Pearl Gray	11	38	51	9	0.44	0.29
V20	Pearl Gray	10	31	59	9	0.47	0.30
V21	Charcoal	4	4	92	5	0.60	0.37
V22	Charcoal/Gray	5	9	86	6	0.58	0.36
V24	Charcoal/Chestnut	6	6	88	6	0.60	0.37
V32	Charcoal/Alpaca	7	18	75	9	0.54	0.34
STYLE 2360 - 10%							
P12	Oyster	27	57	16	21	0.37	0.25
P13	Oyster/Beige	24	51	25	19	0.39	0.27
P14	Oyster/Pearl Gray	20	45	35	16	0.42	0.28
Q20	Beige	19	44	37	16	0.42	0.28
Q21	Beige/Pearl Gray	17	39	44	15	0.44	0.30
V20	Pearl Gray	16	30	54	14	0.49	0.31
V21	Charcoal	10	4	86	11	0.62	0.37
V22	Charcoal/Gray	12	8	80	14	0.60	0.37
V24	Charcoal/Chestnut	11	5	84	12	0.61	0.37
V32	Charcoal/Alpaca	12	15	73	16	0.57	0.35

PROTECTION THAT LIVES ON
MICROBAN®

Microban® antimicrobial protection inhibits the growth of stain-causing bacteria, mold and mildew on the shade.



PRODUCT CERTIFIED FOR
LOW CHEMICAL EMISSIONS
UL.COM/GG
UL 2818



MIF Seal of Approval



TS = Solar Transmittance
RS = Solar Reflectance
AS = Solar Absorptance
TV = Visual Transmittance

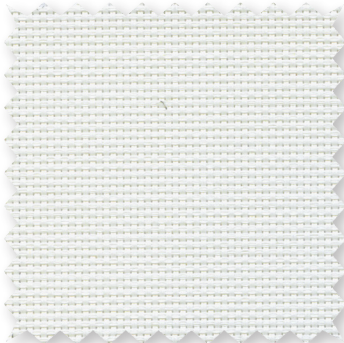
SHGC = Solar Heat Gain Coefficient

1/4 CL = 1/4" Clear Glass
1 HA = 1" Heat Absorbing Glass

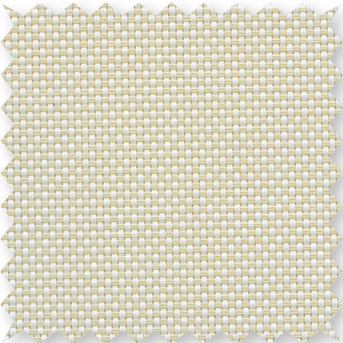
Fabrics Installed Internally
Zero-Degree Profile Angle

For additional performance values, test references and technical definitions visit us at www.phifer.com.

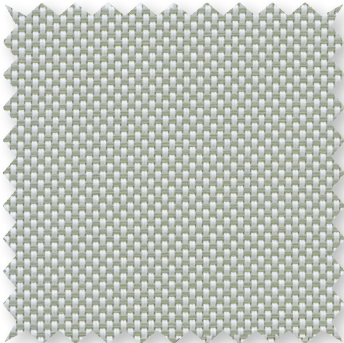
P12 Oyster



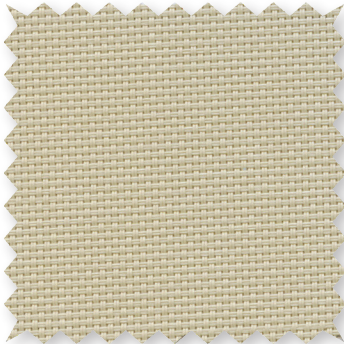
P13 Oyster/Beige



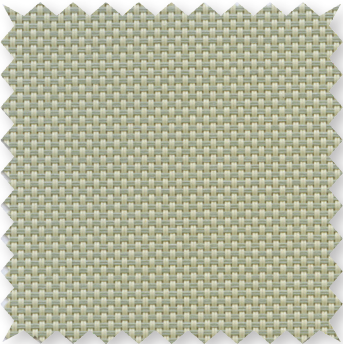
P14 Oyster/Pearl Gray



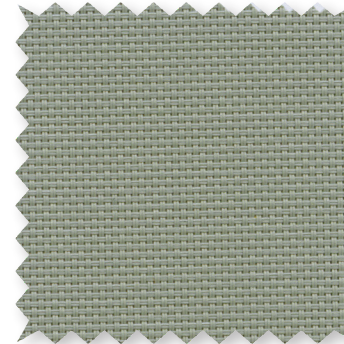
Q20 Beige



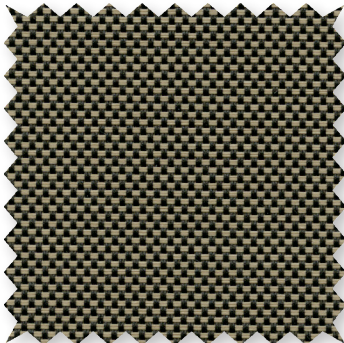
Q21 Beige/Pearl Gray



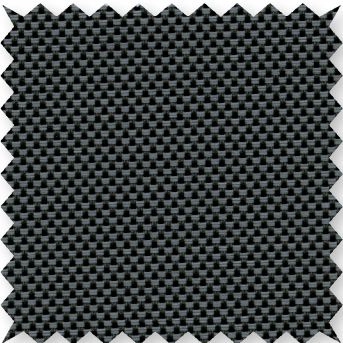
V20 Pearl Gray



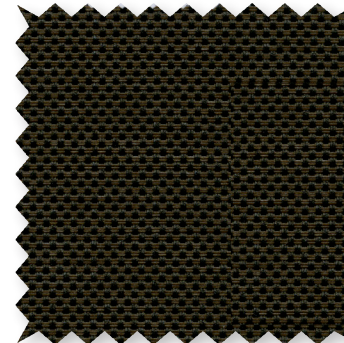
V32 Charcoal/Alpaca



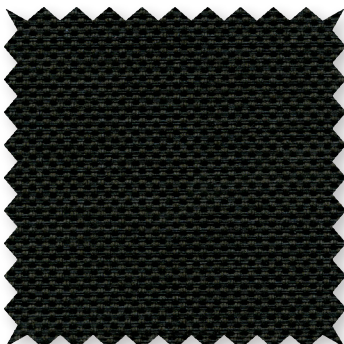
V22 Charcoal/Gray



V24 Charcoal/Chestnut



V21 Charcoal



*Colors may vary based on individual computer settings and should only be used for general reference.

STYLE 2500 / 2410 / 2390 / 2360 SPECIFICATIONS

Manufactured with ease of fabrication in mind, Styles 2500, 2410, 2390 and 2360 are full basketweaves designed expressly for those applications which require a more opaque and nondirectional fabric. Style 2500/2410/2390/2360 can also be used in exterior roller shades.

FIRE CLASSIFICATION	California U.S. Title 19 (small scale) NFPA 101 (Class A Rating) BS 5867 Part 2 Type B Performance CAN/ULC-S 109-03 (large and small scale)	NFPA 701 TM#1 (small scale) IBC Section 803.1.1 (Class A Rating) NFPA 701 TM#2 (large scale) CAN/CGSB2-4.162-M80	
BACTERIA AND FUNGAL RESISTANCE	ASTM E 2180 GREENGUARD Mold and Bacteria Standard ASTM 6329 includes Microban antimicrobial additives	ASTM G21 AATCC30 Part 3	ASTM D 3273
ENVIRONMENTAL CERTIFICATION	GREENGUARD Certified to these standards for low chemical emissions into indoor air during product usage	GREENGUARD Gold	
LEAD FREE	RoHS/Directive 2002/95/EC ANSI/WCMA A 100.1-2007 for lead content US Consumer Product Safety Commission Section 101	REACH (EC 1907/2006) compliant	
WARRANTY	10-year interior	5-year exterior	
ACOUSTICAL PERFORMANCE	NRC (Noise Reduction Coefficient) and SAA (Sound Absorption Average) tested in accordance with ASTM C423-09a		
UV PROTECTION	Seal of Approval by the Melanoma International Foundation (MIF) for effectiveness in preventing sun damage to the skin or eyes		
TRACKLESS	TrackLess Technology minimizes the fiberglass yarns' inherent tendencies to track when being rolled up in a shade. With TrackLess Technology these same fabrics now track less, roll up straighter and reduce shade fabrication time.		

STYLE	2500	2410	2390	2360
WIDTHS	63", 98" and 126" 160 cm, 248.9 cm and 320 cm	63", 98" and 126" 160 cm, 248.9 cm and 320 cm	63", 98" and 126" 160 cm, 248.9 cm and 320 cm	63" and 98" 160 cm and 248.9 cm
ROLL LENGTH	30 Linear Yards 27.4 m	30 Linear Yards 27.4 m	30 Linear Yards 27.4 m	30 Linear Yards 27.4 m
COMPOSITION	37% Fiberglass 63% Vinyl on Fiberglass	35% Fiberglass 65% Vinyl on Fiberglass	35% Fiberglass 65% Vinyl on Fiberglass	35% Fiberglass 65% Vinyl on Fiberglass
MESH WEIGHT	16.2 oz/yd ² 549 g/m ²	14.1 oz/yd ² 478 g/m ²	11.8 oz/yd ² 400 g/m ²	10.4 oz/yd ² 353 g/m ²
FABRIC THICKNESS	0.024 in 0.61 mm	0.020 in 0.51 mm	0.017 in 0.43 mm	0.019 in 0.48 mm
OPENNESS FACTOR	Approximately 1%	Approximately 3%	Approximately 5%	Approximately 10%
UV BLOCKAGE	Approximately 99%	Approximately 97%	Approximately 95%	Approximately 90%
ACOUSTICAL VALUE	NRC .55 / SAA .54	NRC .20 / SAA .21	NRC .10 / SAA .12	NRC .05 / SAA .06

PHIFER
INCORPORATED

P. O. Box 1700 • Tuscaloosa, Alabama 35403 -1700 USA
Phone: 205.345.2120 • FAX: 205.391.0799
Toll Free USA/Canada: 1.800.221.5497
phifer.com • ISO Registered



© SheerWeave is a registered trademark of PHIFER INCORPORATED.
© MICROBAN is a registered trademark of Microban Products Company.
™ UL, the UL logos and the UL mark are trademarks of UL LLC.
Cover photo courtesy of GRUPO AMERICAN CLASSIC, Monterrey, México.
© PHIFER INCORPORATED V17B 3033832