



STYLE  
2701 / 2703 / 2705 / 2710

---

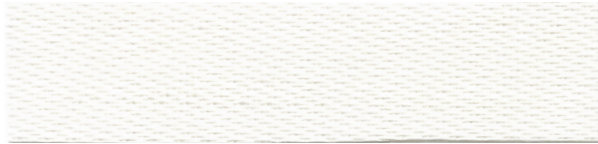
WEAVING  
EXCELLENCE  
WITH  
INNOVATION



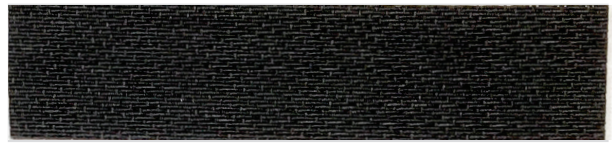
Code Color		SOLAR OPTICAL PROPERTIES				SHGC/G VALUE g-tot (glass & blind)		SOLAR OPTICAL PROPERTIES				SHGC/G VALUE g-tot (glass & blind)	
		TS	RS	AS	TV	SINGLE 1/4 CL	INSULATING 1 HA	TS	RS	AS	TV	SINGLE 1/4 CL	INSULATING 1 HA
<b>STYLE 2701 FACE - 1%</b>								<b>STYLE 2701 BACK</b>					
P12	Oyster	21	64	15	17	0.31	0.23	21	64	15	17	0.31	0.23
P13	Oyster/Beige	15	57	28	12	0.33	0.23	16	56	28	13	0.40	0.28
P14	Oyster/Pearl Gray	8	54	38	4	0.34	0.24	8	33	59	6	0.53	0.35
P28	Oyster/Charcoal	5	39	56	6	0.41	0.28	4	10	86	4	0.66	0.41
P91	Oyster/Pewter	6	43	51	6	0.39	0.26	5	19	76	5	0.61	0.38
P92	Oyster/Chestnut	6	41	53	6	0.40	0.28	5	13	82	5	0.64	0.40
V21	Charcoal	3	4	93	3	0.69	0.43	3	4	93	3	0.69	0.43
V22	Charcoal/Gray	3	14	83	3	0.63	0.40	3	6	91	3	0.68	0.42
V64	Charcoal/Slate	4	30	66	4	0.53	0.35	4	10	86	4	0.66	0.41
V65	Charcoal/Taupe	4	25	71	3	0.56	0.36	4	9	88	3	0.67	0.41
V66	Charcoal/Brown	4	17	78	4	0.62	0.39	4	7	89	4	0.68	0.42
<b>STYLE 2703 FACE - 3%</b>								<b>STYLE 2703 BACK</b>					
P12	Oyster	22	62	16	19	0.32	0.23	22	62	16	19	0.32	0.23
P13	Oyster/Beige	15	58	27	13	0.33	0.24	18	33	49	16	0.55	0.35
P14	Oyster/Pearl Gray	9	53	38	9	0.35	0.25	11	49	40	10	0.43	0.30
P28	Oyster/Charcoal	7	40	53	8	0.42	0.28	6	10	84	6	0.66	0.41
P91	Oyster/Pewter	8	44	48	9	0.40	0.27	8	19	73	8	0.61	0.39
P92	Oyster/Chestnut	7	42	51	8	0.41	0.28	8	14	78	8	0.64	0.40
V21	Charcoal	5	4	91	5	0.70	0.43	5	4	91	5	0.70	0.43
V22	Charcoal/Gray	5	13	82	5	0.64	0.40	5	6	89	5	0.68	0.42
V64	Charcoal/Slate	7	27	65	7	0.56	0.36	7	10	83	7	0.67	0.41
V65	Charcoal/Taupe	6	24	70	6	0.58	0.37	6	8	86	6	0.67	0.42
V66	Charcoal/Brown	6	17	77	6	0.62	0.39	6	7	87	6	0.68	0.42
<b>STYLE 2705 FACE - 5%</b>								<b>STYLE 2705 BACK</b>					
P12	Oyster	22	62	16	20	0.32	0.23	22	62	16	20	0.32	0.23
P13	Oyster/Beige	23	54	23	21	0.37	0.26	23	48	29	21	0.47	0.31
P14	Oyster/Pearl Gray	19	51	30	21	0.38	0.26	17	34	49	16	0.54	0.35
P28	Oyster/Charcoal	12	40	48	14	0.43	0.29	11	11	78	12	0.67	0.41
P91	Oyster/Pewter	11	46	43	12	0.39	0.27	13	22	65	14	0.61	0.38
P92	Oyster/Chestnut	12	43	45	13	0.41	0.28	12	20	68	12	0.62	0.39
V21	Charcoal	7	4	89	7	0.70	0.43	7	4	89	7	0.70	0.43
V22	Charcoal/Gray	8	6	86	8	0.69	0.43	8	12	80	8	0.65	0.41
V64	Charcoal/Slate	9	25	66	8	0.58	0.37	9	9	83	8	0.68	0.42
V65	Charcoal/Taupe	9	21	70	8	0.60	0.38	9	8	84	8	0.68	0.42
V66	Charcoal/Brown	9	16	75	8	0.64	0.40	9	7	85	8	0.69	0.42
<b>STYLE 2710 FACE - 10%</b>								<b>STYLE 2710 BACK</b>					
P12	Oyster	34	54	12	32	0.39	0.27	34	54	12	32	0.39	0.27
P13	Oyster/Beige	29	51	20	28	0.40	0.27	29	47	24	28	0.49	0.32
P28	Oyster/Charcoal	21	37	42	24	0.46	0.30	20	17	63	21	0.65	0.40
P91	Oyster/Pewter	24	43	33	25	0.44	0.29	21	25	54	23	0.61	0.38
P92	Oyster/Chestnut	25	41	34	26	0.45	0.30	22	20	58	23	0.64	0.40
V21	Charcoal	15	4	81	15	0.72	0.44	15	3	81	15	0.72	0.44
V22	Charcoal/Gray	15	10	76	14	0.68	0.42	15	5	80	14	0.71	0.43
V64	Charcoal/Slate	15	16	69	15	0.65	0.40	15	7	78	15	0.70	0.43
V65	Charcoal/Taupe	15	17	69	14	0.64	0.40	15	7	78	14	0.70	0.43
V66	Charcoal/Brown	14	12	74	14	0.67	0.41	14	6	80	14	0.71	0.43

TS = Solar Transmittance | RS = Solar Reflectance | AS = Solar Absorption | TV = Visual Transmittance | SHGC = Solar Heat Gain Coefficient  
1/4 CL = 1/4" Clear Glass | 1 HA = 1" Heat Absorbing Glass | Fabrics Installed Internally | Zero-Degree Profile Angle  
For additional performance values, test references and technical definitions visit us at [www.phifer.com](http://www.phifer.com).

P12 Oyster



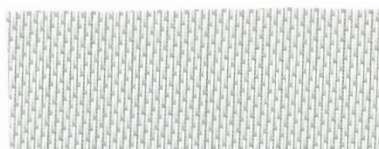
**NEW**  
V21 Charcoal



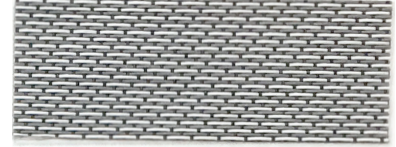
P13 Oyster / Beige - face  
Oyster / Beige - back



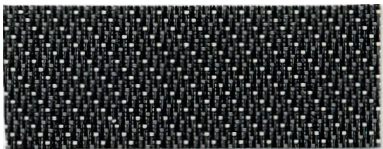
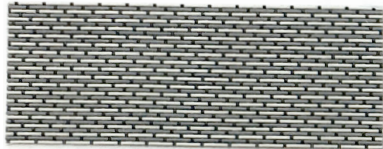
P14\* Oyster / Pearl Gray - face  
Oyster / Pearl Gray - back



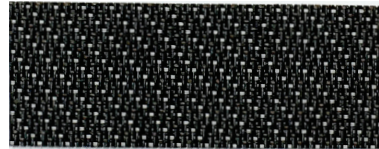
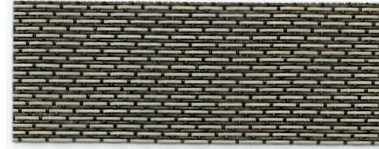
**NEW**  
V64 Charcoal / Slate - face  
Charcoal / Slate - back



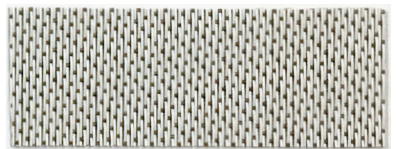
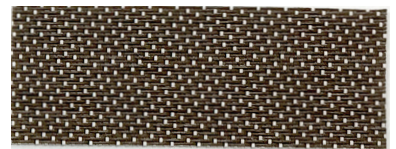
**NEW**  
V65 Charcoal / Taupe - face  
Charcoal / Taupe - back



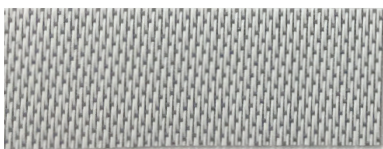
**NEW**  
V66 Charcoal / Brown - face  
Charcoal / Brown - back



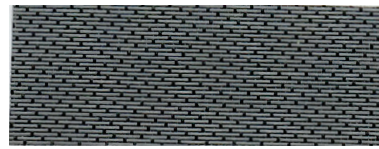
P92 Oyster / Chestnut - face  
Oyster / Chestnut - back



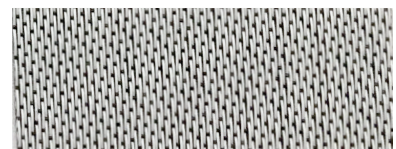
P91 Oyster / Pewter - face  
Oyster / Pewter - back



**NEW**  
V22 Charcoal / Gray - face  
Charcoal / Gray - back



P28 Oyster / Charcoal - face  
Oyster / Charcoal - back



\*Colors may vary based on individual computer settings and should only be used for general reference.

PROTECTION THAT LIVES ON  
**MICROBAN**

Microban® antimicrobial protection inhibits the growth of stain-causing bacteria, mold and mildew on the shade.



PRODUCT CERTIFIED FOR  
LOW CHEMICAL EMISSIONS  
UL.COM/GG  
UL 2818



MIF Seal  
of Approval



\* P14 Oyster / Pearl Gray currently available in 2701, 2703 and 2705

# STYLE 2701 / 2703 / 2705 / 2710 SPECIFICATIONS

Styles 2701, 2703, 2705 and 2710 are woven from a unique twill pattern that displaces the individual yarns to create a two-sided fabric for maximum performance in heat reduction, glare reduction and improved visibility. Style 2701/2703/2705/2710 can also be used in exterior roller shades.

<b>FIRE CLASSIFICATION</b>	California U.S. Title 19 (small scale)	NFPA 701 TM#1 (small scale)
	NFPA 101 (Class A Rating)	IBC Section 803.1.1 (Class A Rating)
	BS 5867 Part 2 Type B Performance	NFPA 701 TM#2 (large scale)
	CAN/ULC-S 109-03 (large and small scale)	CAN/CGSB2-4.162-M80

<b>BACTERIA AND FUNGAL RESISTANCE</b>	ASTM E 2180	ASTM G21	AATCC30 Part 3	ASTM D 3273
	GREENGUARD Mold and Bacteria Standard ASTM 6329 includes Microban antimicrobial additives			

<b>ENVIRONMENTAL CERTIFICATION</b>	GREENGUARD	GREENGUARD Gold
	Certified to these standards for low chemical emissions into indoor air during product usage	

<b>LEAD FREE</b>	RoHS/Directive 2002/95/EC	REACH (EC 1907/2006) compliant
	ANSI/WCMA A 100.1-2007 for lead content	
	US Consumer Product Safety Commission Section 101	

<b>WARRANTY</b>	10-year interior	5-year exterior
-----------------	------------------	-----------------

<b>ACOUSTICAL PERFORMANCE</b>	NRC (Noise Reduction Coefficient) and SAA (Sound Absorption Average) tested in accordance with ASTM C423-09a		
-------------------------------	--	--	--

<b>UV PROTECTION</b>	Seal of Approval by the Melanoma International Foundation (MIF) for effectiveness in preventing sun damage to the skin or eyes		
----------------------	--	--	--

<b>TRACKLESS</b>	TrackLess Technology minimizes the fiberglass yarns' inherent tendencies to track when being rolled up in a shade. With TrackLess Technology these same fabrics now track less, roll up straighter and reduce shade fabrication time.		
------------------	---	--	--

STYLE	2701	2703	2705	2710
<b>WIDTHS</b>	63", 98" and 126" 160.0 cm, 248.9 cm and 320 cm	63", 98" and 126" 160.0 cm, 248.9 cm and 320 cm	63", 98" and 126" 160.0 cm, 248.9 cm and 320 cm	63" and 98" 160.0 cm and 248.9 cm
<b>ROLL LENGTH</b>	30 Linear Yards 27.4 m	30 Linear Yards 27.4 m	30 Linear Yards 27.4 m	30 Linear Yards 27.4 m
<b>COMPOSITION</b>	36% Fiberglass 64% Vinyl on Fiberglass	36% Fiberglass 64% Vinyl on Fiberglass	34% Fiberglass 66% Vinyl on Fiberglass	34% Fiberglass 66% Vinyl on Fiberglass
<b>MESH WEIGHT</b>	14.6 oz/yd <sup>2</sup> 495 g/m <sup>2</sup>	14.0 oz/yd <sup>2</sup> 475 g/m <sup>2</sup>	11.8 oz/yd <sup>2</sup> 379 g/m <sup>2</sup>	10.4 oz/yd <sup>2</sup> 353 g/m <sup>2</sup>
<b>FABRIC THICKNESS</b>	0.027 in 0.66 mm	0.028 in 0.71 mm	0.025 in 0.64 mm	0.025 in 0.64 mm
<b>OPENNESS FACTOR</b>	Approximately 1%	Approximately 3%	Approximately 5%	Approximately 10%
<b>UV BLOCKAGE</b>	Approximately 99%	Approximately 97%	Approximately 95%	Approximately 90%
<b>ACOUSTICAL VALUE</b>	NRC .15 / SAA .15	NRC .10 / SAA .09	NRC .05 / SAA .06	NRC .05 / SAA .05

**PHIFER**  
INCORPORATED

P. O. Box 1700 • Tuscaloosa, Alabama 35403 -1700 USA  
Phone: 205.345.2120 • FAX: 205.391.0799  
Toll Free USA/Canada: 1.800.221.5497  
phifer.com • ISO Registered



© SheerWeave is a registered trademark of PHIFER INCORPORATED.  
© MICROBAN is a registered trademark of Microban Products Company.  
™ UL, the UL logos and the UL mark are trademarks of UL LLC.  
Photo courtesy of Draper INC., Spiceland, Indiana, USA.  
© PHIFER INCORPORATED V18 3033833