



STYLE
7100
BLACKOUT FABRIC

WEAVING
EXCELLENCE
WITH
INNOVATION



Code	Color	SOLAR OPTICAL PROPERTIES				SHGC/G VALUE g-tot (glass & blind)	
		TS	RS	AS	TV	SINGLE 1/4 CL	INSULATING 1 HA
STYLE 7100 - BLACKOUT							
P02	White	0	71	29	0	0.23	0.19
V21	Charcoal	0	71	29	0	0.23	0.19



PROTECTION THAT LIVES ON
MICROBAN[®]

Microban[®] antimicrobial protection inhibits the growth of stain-causing bacteria, mold and mildew on the shade.



PRODUCT CERTIFIED FOR
 LOW CHEMICAL EMISSIONS
 UL.COM/GG
 UL 2818



MIF Seal of Approval



TS = Solar Transmittance
 RS = Solar Reflectance
 AS = Solar Absorptance
 TV = Visual Transmittance

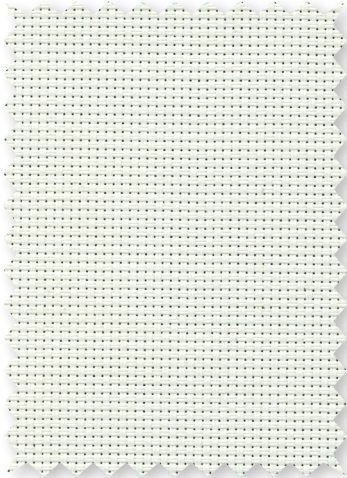
SHGC = Solar Heat Gain Coefficient

1/4 CL = 1/4" Clear Glass
 1 HA = 1" Heat Absorbing Glass

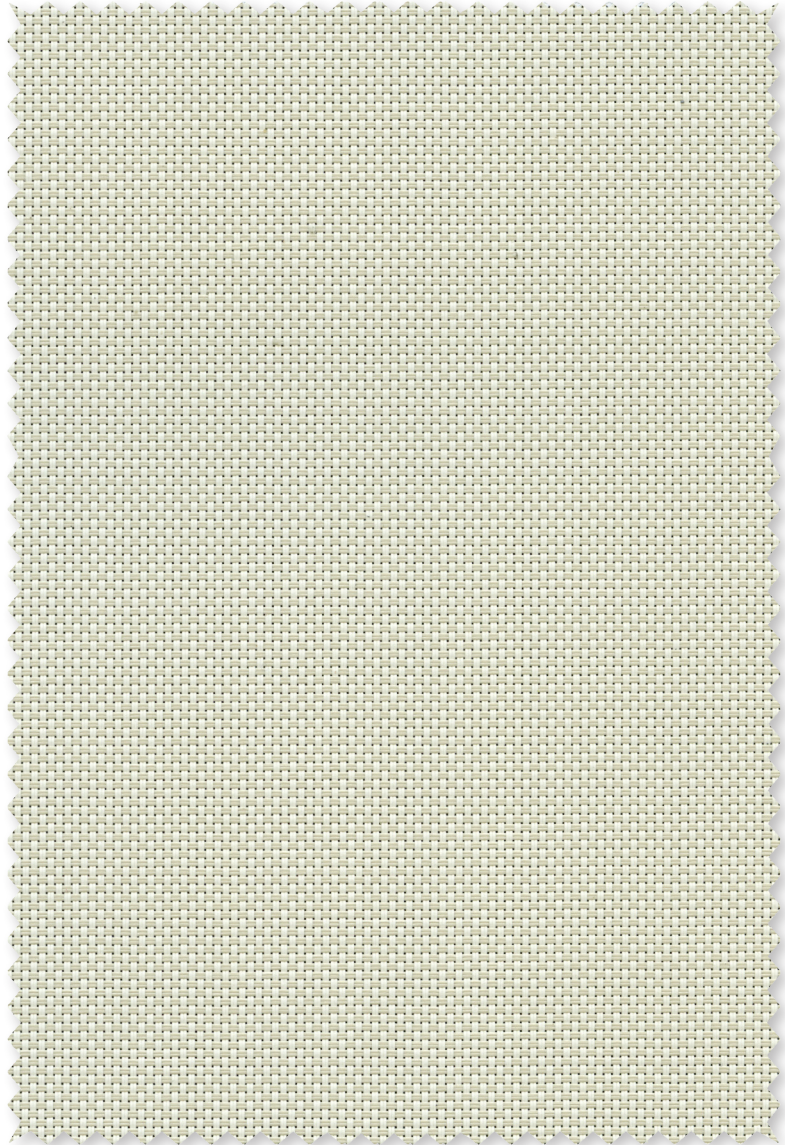
Fabrics Installed Internally
 Zero-Degree Profile Angle

For additional performance values, test references and technical definitions visit us at www.phifer.com.

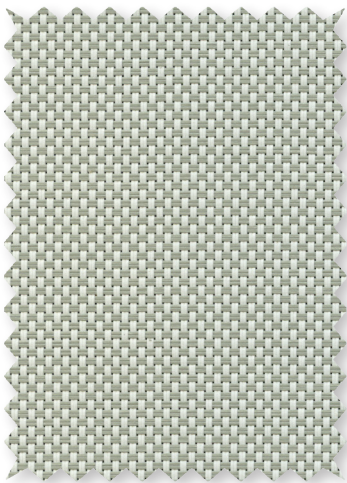
P02 **White**



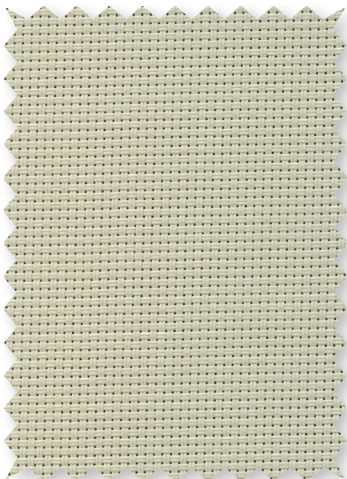
P04 **White/Bone**



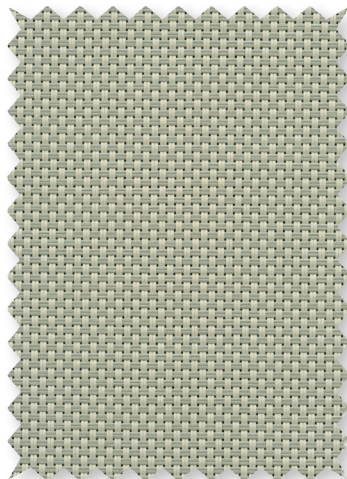
P05 **White/Platinum**



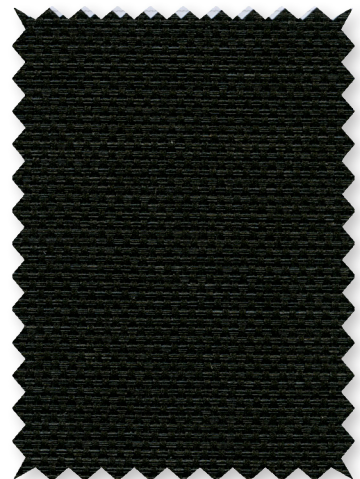
Q05 **Bone**



Q06 **Bone/Platinum**



V21 **Charcoal**



*Colors may vary based on individual computer settings and should only be used for general reference.

STYLE 7100 SPECIFICATIONS

Style 7100 is a durable laminated blackout fabric that combines the woven texture of our Style 2000 as the face fabric with a durable vinyl backing to achieve total light blockage. Style 7100 coordinates easily with other SheerWeave fabrics when multi-purpose shades are needed. All Style 7100 colors have a white backing.

FIRE CLASSIFICATION	California U.S. Title 19 (small scale) NFPA 101 (Class A Rating) BS 5867 Part 2 Type B Performance	NFPA 701 TM#1 (small scale) IBC Section 803.1.1 (Class A Rating) NFPA 701 TM#2 (large scale)
BACTERIA AND FUNGAL RESISTANCE	ASTM E 2180 GREENGUARD Mold and Bacteria Standard ASTM 6329 Style 2000 face includes Microban antimicrobial additives.	ASTM G21 AATCC30 Part 3 ASTM D 3273
ENVIRONMENTAL CERTIFICATION	GREENGUARD Certified to these standards for low chemical emissions into indoor air during product usage	GREENGUARD Gold
LEAD FREE	RoHS/Directive 2002/95/EC ANSI/WCMA A 100.1-2007 for lead content US Consumer Product Safety Commission Section 101	REACH (EC 1907/2006) compliant
WARRANTY	10-year interior	
ACOUSTICAL PERFORMANCE	NRC (Noise Reduction Coefficient) and SAA (Sound Absorption Average) tested in accordance with ASTM C423-09a	
UV PROTECTION	Seal of Approval by the Melanoma International Foundation (MIF) for effectiveness in preventing sun damage to the skin or eyes	
TRACKLESS	TrackLess Technology minimizes the fiberglass yarns' inherent tendencies to track when being rolled up in a shade. With TrackLess Technology these same fabrics now track less, roll up straighter and reduce shade fabrication time.	

Due to the construction of Style 7100, some cupping may occur. Railroadng this fabric is not recommended

STYLE 7100

WIDTHS	63" and 96" 160 cm and 243.8 cm
ROLL LENGTH	30 Linear Yards 27.4 m
COMPOSITION	Vinyl coated fiberglass fabric Laminated with a two-ply 100% PVC blackout film
MESH WEIGHT	21.6 oz/yd ² 732 g/m ²
FABRIC THICKNESS	0.025 in 0.64 mm
OPENNESS FACTOR	Opaque
ACOUSTICAL VALUE	NRC .05 / SAA .03

PHIFER
INCORPORATED

P. O. Box 1700 • Tuscaloosa, Alabama 35403-1700 USA
Phone: 205.345.2120 • FAX: 205.391.0799
Toll Free USA/Canada: 1.800.221.5497
phifer.com • ISO Registered



© SheerWeave is a registered trademark of PHIFER INCORPORATED.
© MICROBAN is a registered trademark of Microban Products Company.
™ UL, the UL logos and the UL mark are trademarks of UL LLC.
Photo courtesy of Rielamericano, Buenos Aires, Argentina.
© PHIFER INCORPORATED V17 3033843