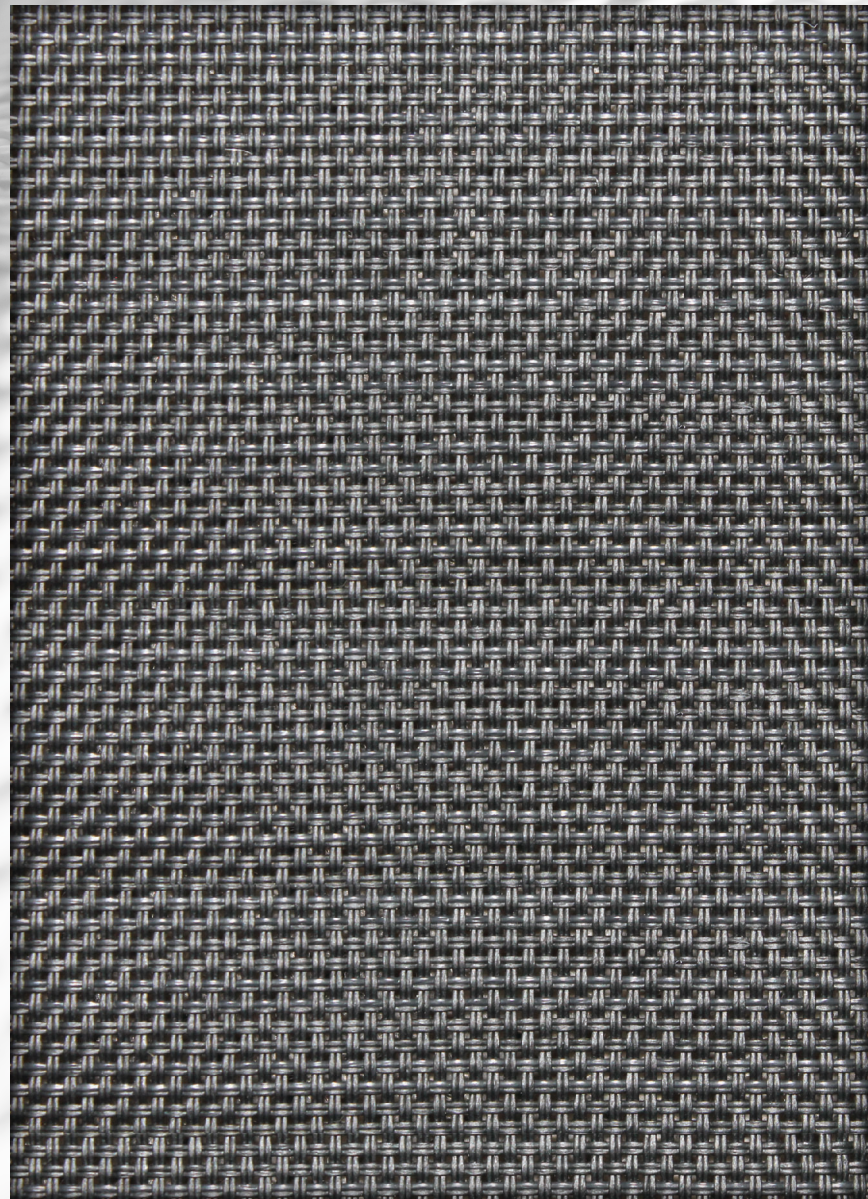




TEXTILENE®
BRAND FABRIC
nano™ 95



Due to the technical limitations of digital cameras and inconsistencies of display monitors, the characteristics and colors of the fabrics seen on your screen may be slightly different than the actual product.

TEXTILENE® nano™ 95 is a durable, yet lightweight synthetic fabric. It is lighter and finer with the same technical qualities as the original TEXTILENE®. TEXTILENE® nano™95 is excellent for exterior use and can reduce energy costs while blocking up to 95% of the sun's harmful rays.

*Custom colors and widths available. Minimum order of 1000 yards. Upcharges may apply.

Specifications

REACH Compliant - Regulated by Registration, Evaluation, Authorization and Restriction of Chemicals. REACH places greater responsibility on industry to manage the risks that chemicals may pose to human health and the environment.

Children's Toy Act - Does not contain harmful phthalates listed under Section 108 of the Consumer Product Safety Improvement Act of 2008 (CPSIA).

Fire Classification - Passes California U.S. Title 19 (small scale), NFPA701-2015 TM#1 (small scale), NFPA 101 (Class A Rating), UBC (Class 1), BS 5867 2008 Part 2 Type B Performance, NFPA 701 TM #2 (large scale), and CAN/ULC-S 109-03 (large and small scale).

Environmental Certification - GREENGUARD gold certified. Acceptable for use in environments such as schools and healthcare facilities. Complies with requirements of the State of California's Department of Public Health "Standard Method for Testing and Evaluation of Volatile Organic Chemical Emissions from Indoor Sources Using Environmental Chambers, Version 1.1 (2010)" (also known as California Section 01350).

RoHS Compliant - Free of Lead (Pb), Cadmium (Cd), Mercury (Hg), Hexavalent chromium (Hex-Cr), Polybrominated biphenyls (PBB), and Polybrominated diphenyl ethers (PBDE).

Bacteria and Fungal Resistance - Passes ASTM E 2180, ASTM G21. Includes specially formulated antimicrobial.



FLAME RESISTANT



LEAD FREE



GREENGUARD GOLD



REACH COMPLIANCE



PRINTABLE



RoHS COMPLIANT



MADE IN USA



LIMITED WARRANTY

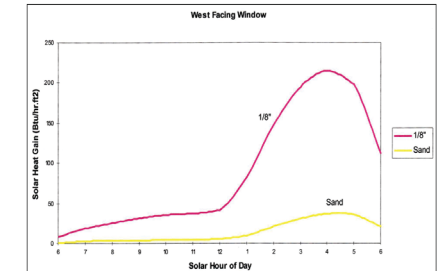
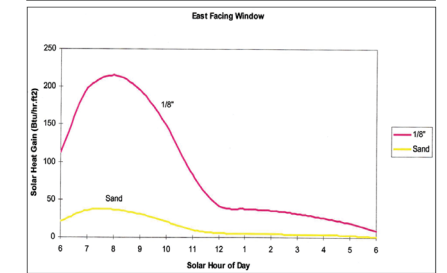
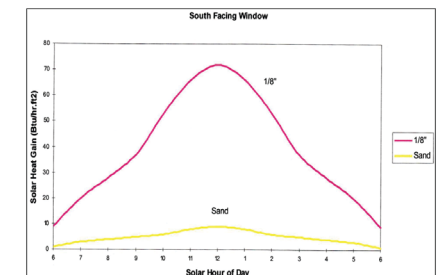
Technical Data

Item Number: T18FVS, T18FVT

Product Description: A woven fabric using .014" diameter vinyl coated 420 denier polyester core yarns woven in the warp and fill.

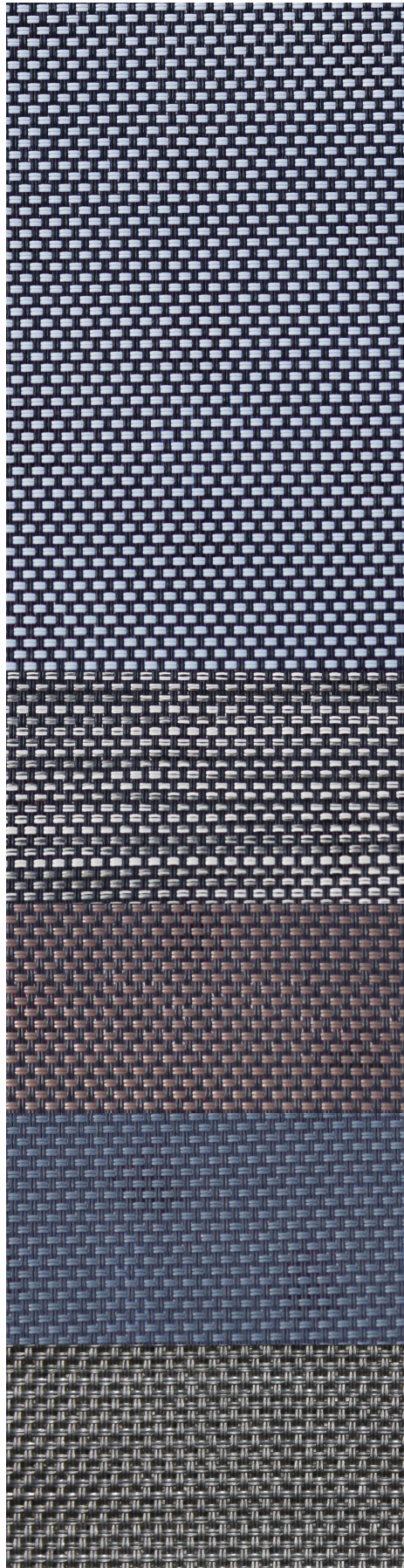
Attribute	ASTM	Warp	Fill	Typical
Construction, end/inch	D3775-17	36.0 ±0.5	34.0 ±0.5	
Weight, oz/yd ²	D3776-09			14.7
Weight, g/m ²	D3776-09			498.5
Tensile Strength (grab), lbf / daN	D5034-09	423.6 / 192.1	382.2 / 173.4	
Tensile Strength (strip), lbf / daN	D5035-11	218.5 / 99.1	188.4 / 85.5	
Tear Strength (trapezoidal), lbf / daN	D1117-99	58.4 / 26.5	42.2 / 19.1	
Elongation, %	D5035-11	12.7	11.6	
Abrasion Resistance (CS10/500 cycles/ with no added weight)	D3884-09	No Exposure of Core Yarn		
Flammability Rating		CA Title 19 & NFPA 701		
Weatherability, 1200 hours	G154-16	No Discoloration		
Mildew Resistance	G21-13	Pass		
Thickness, inches/mm	D1777-15			0.026 / 0.66

The above results are a representation of real data from single test samples. Presently no specification is incorporated.



Fenestration Properties for Twitchell Shade Material Exterior Use - 45 Degree Profile Angle

Description	Total Solar			Visible			Single Glass			Insulating Glass		
	Ts	Rs	As	Tv	Rv	Av	1/8" Clr.	1/4" Clr.	1/4" HA	1/2" Clr.	1" Clr.	1" HA
Black	5	8	87	6	9	85	0.15	0.15	0.15	0.11	0.11	0.11



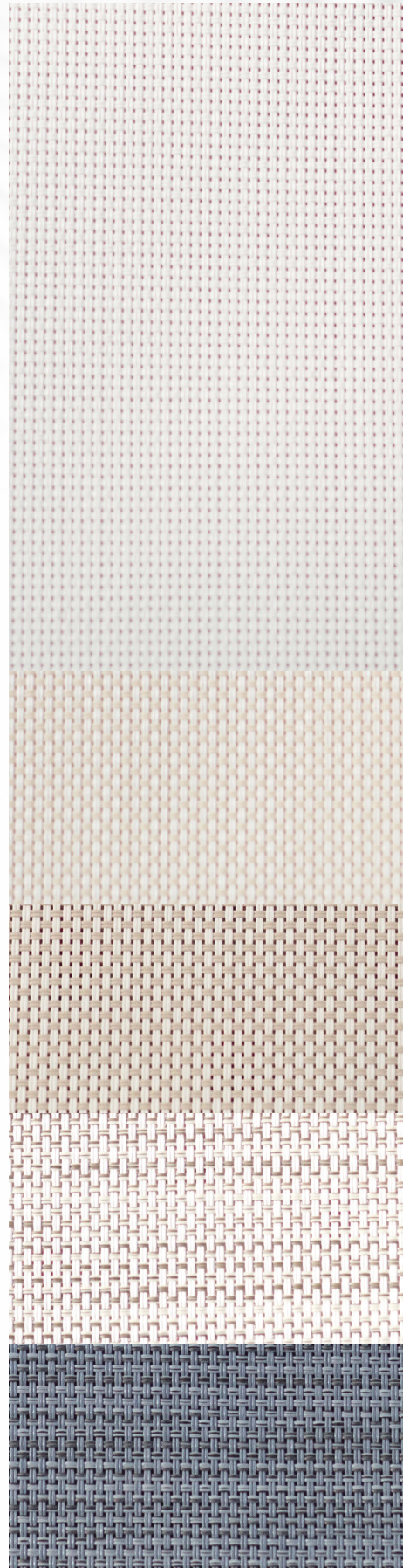
Granite
T18FVT041 x 96"
T18FVT049 x 120"

Espresso Texture
T18FVT043 x 96"
T18FVT051 x 120"

Tobacco
T18FVT044 x 96"
T18FVT052 x 120"

Charcoal
T18FVT042 x 96"
T18FVT050 x 120"

Black
T18FVS023 x 96"
T18FVS024 x 120"



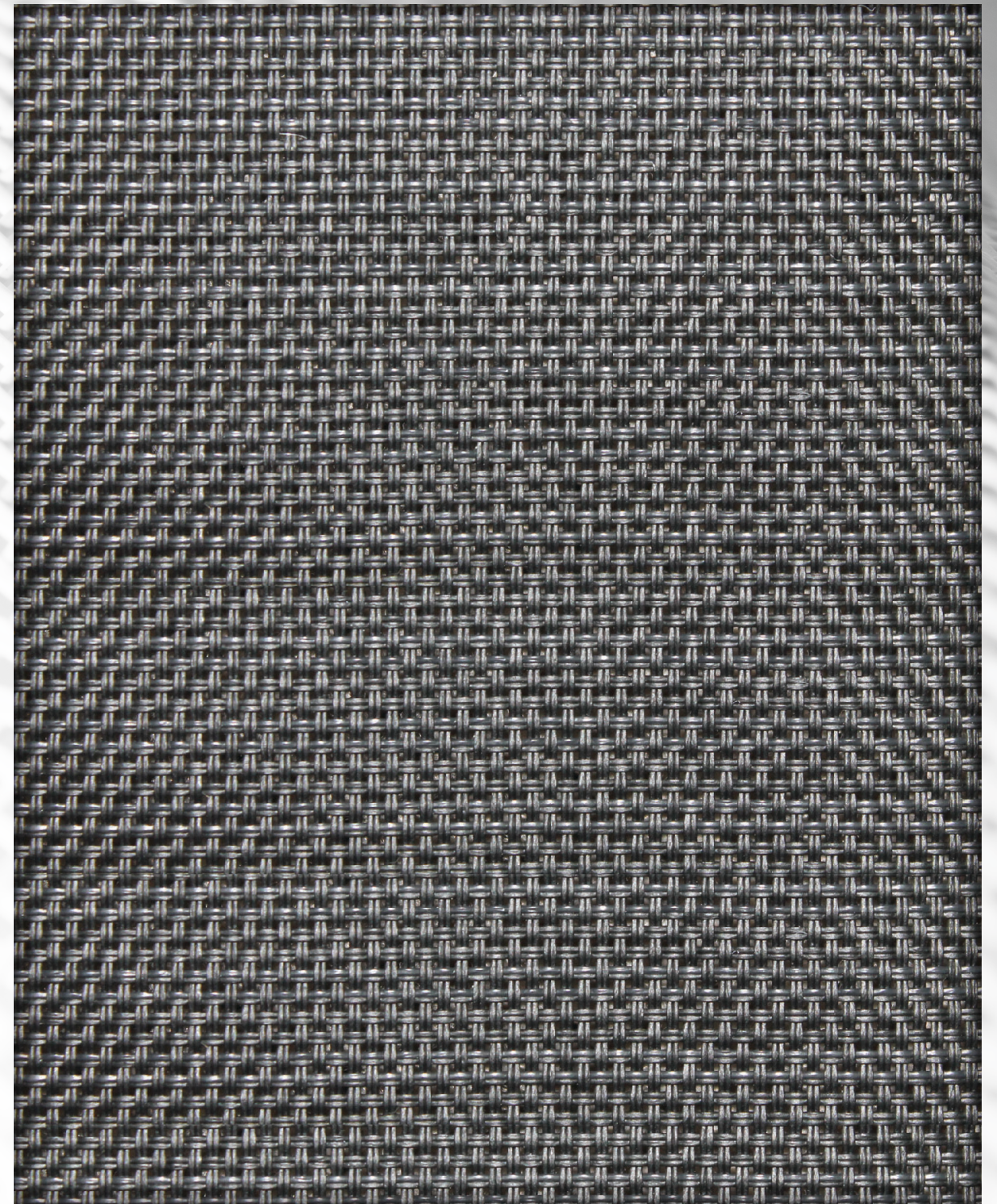
White
T18FVS021 x 96"
T18FVS022 x 120"

Sable
T18FVT038 x 96"
T18FVT046 x 120"

Bone
T18FVT039 x 96"
T18FVT047 x 120"

Stone Texture
T18FVT040 x 96"
T18FVT048 x 120"

Shadow Texture
T18FVT037 x 96"
T18FVT045 x 120"



Black